



Chipsmall Limited consists of a professional team with an average of over 10 year of expertise in the distribution of electronic components. Based in Hongkong, we have already established firm and mutual-benefit business relationships with customers from,Europe,America and south Asia,supplying obsolete and hard-to-find components to meet their specific needs.

With the principle of “Quality Parts,Customers Priority,Honest Operation,and Considerate Service”,our business mainly focus on the distribution of electronic components. Line cards we deal with include Microchip,ALPS,ROHM,Xilinx,Pulse,ON,Everlight and Freescale. Main products comprise IC,Modules,Potentiometer,IC Socket,Relay,Connector.Our parts cover such applications as commercial,industrial, and automotives areas.

We are looking forward to setting up business relationship with you and hope to provide you with the best service and solution. Let us make a better world for our industry!



Contact us

Tel: +86-755-8981 8866 Fax: +86-755-8427 6832

Email & Skype: info@chipsmall.com Web: www.chipsmall.com

Address: A1208, Overseas Decoration Building, #122 Zhenhua RD., Futian, Shenzhen, China

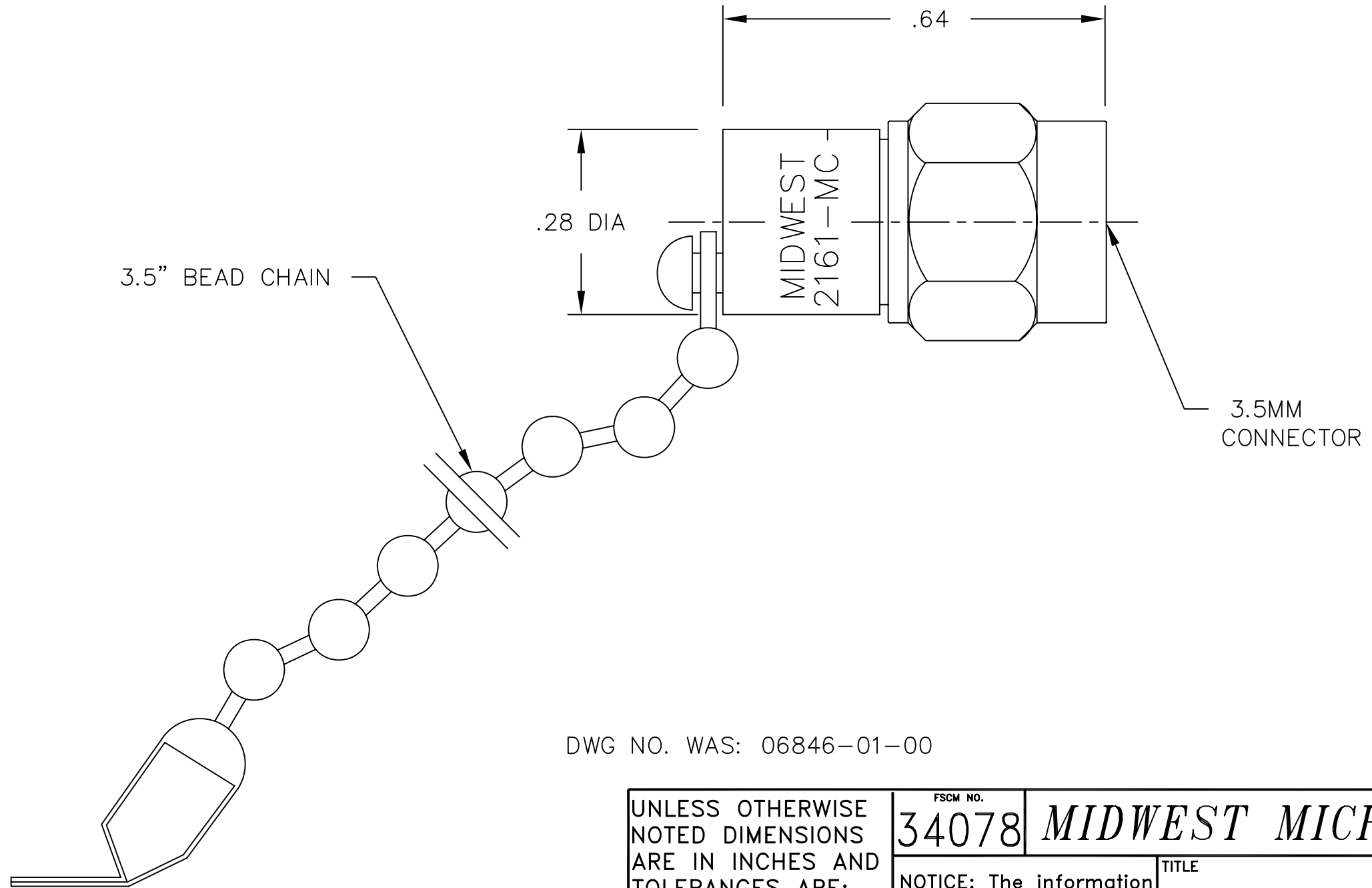


NOTES:

1.0 ELECTRICAL SPECIFICATIONS:

- 1.1 FREQUENCY RANGE: DC to 18.0 GHz
- 1.2 VSWR (MAX): 1.12:1
- 1.3 MAXIMUM INPUT POWER: 2 WATTS AT +25°C DERATED LINEARLY TO 1 WATT AT +125°C.
- 1.4 OPERATING TEMP. RANGE: -65°C to +125°C

2.0 MARKING (MARK UNIT AS SHOWN):



DWG NO. WAS: 06846-01-00

REV.	DESCRIPTION	DATE
-	RELEASED	8/12/92
A	ECR 4964	11/6/86
B	ECR 6545	8/1/89
C	ECR 6847	9/21/89
D	ECN 11948	8/7/92
E	ECN 12390	2/1/93
E1	ADDED TITLEBLOCK	11/9/05

UNLESS OTHERWISE NOTED DIMENSIONS ARE IN INCHES AND TOLERANCES ARE:		FSCM NO. 34078		MIDWEST MICROWAVE	
3 PLACE DECIMALS ±.005		NOTICE: The information contained in this drawing is proprietary and must not be used without the permission of Midwest Microwave		TITLE TERMINATION - 3.5MM PLUG	
2 PLACE DECIMALS ±.02					
FRACTIONS ±1/64					
PARALLELITY: T.I.R. _____					
FLATNESS: T.I.R. _____					
CONCENTRICITY: T.I.R. _____		DRAWN/DATE A.BEATTY 8/7/92	ENG./DATE G.KOZAK 8/7/92	DRAWING NUMBER TRM-2161-MC-35M-02	
ANGLES AND PERPENDICULARITY: ±1°		CHECKED/DATE M.HOLLMAN 8/7/92	APPROVED/DATE	SCALE: 5=1	SHEET 1 of 1

MODEL NUMBER
TRM-2161-MC-35M-02
REV.
E1