



Chipsmall Limited consists of a professional team with an average of over 10 year of expertise in the distribution of electronic components. Based in Hongkong, we have already established firm and mutual-benefit business relationships with customers from,Europe,America and south Asia,supplying obsolete and hard-to-find components to meet their specific needs.

With the principle of “Quality Parts,Customers Priority,Honest Operation,and Considerate Service”,our business mainly focus on the distribution of electronic components. Line cards we deal with include Microchip,ALPS,ROHM,Xilinx,Pulse,ON,Everlight and Freescale. Main products comprise IC,Modules,Potentiometer,IC Socket,Relay,Connector.Our parts cover such applications as commercial,industrial, and automotives areas.

We are looking forward to setting up business relationship with you and hope to provide you with the best service and solution. Let us make a better world for our industry!



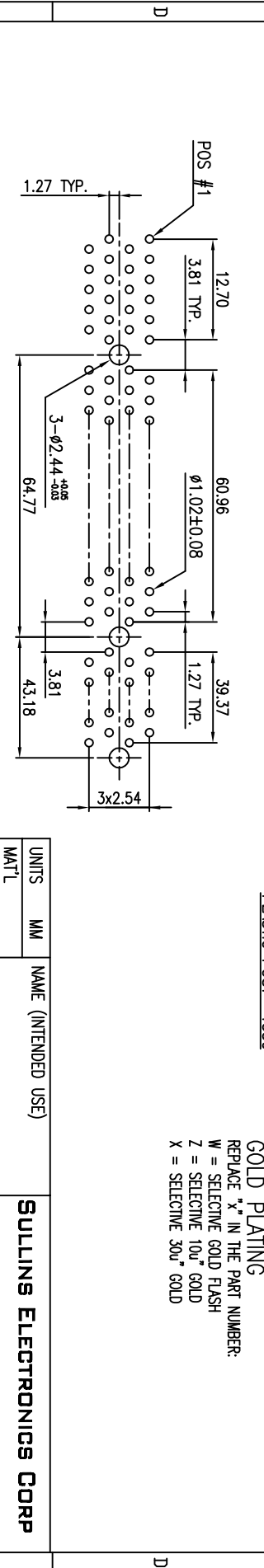
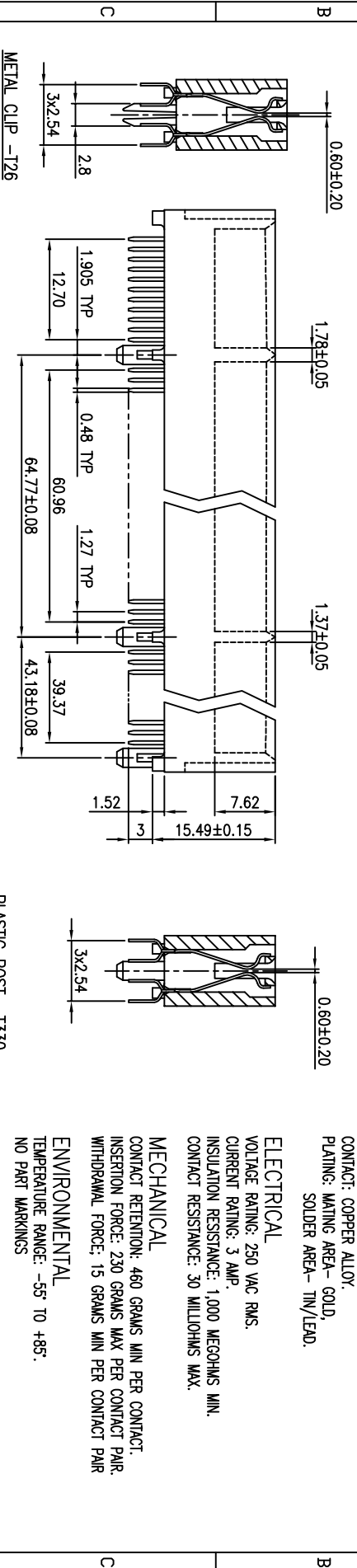
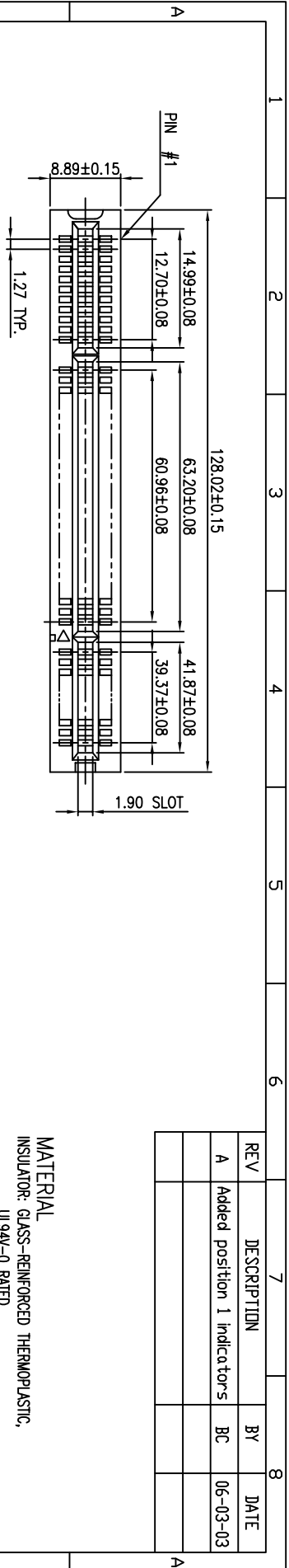
Contact us

Tel: +86-755-8981 8866 Fax: +86-755-8427 6832

Email & Skype: info@chipsmall.com Web: www.chipsmall.com

Address: A1208, Overseas Decoration Building, #122 Zhenhua RD., Futian, Shenzhen, China





RECOMMENDED PCB LAYOUT

X ±	X* ± 1*
X ± 0.10	X* ± 0.5*
XX ± 0.05	XX* ±
XXX ±	XXX* ±

UNITS	MM	NAME (INTENDED USE)	
MAT'L		PART NO. (INTENDED USE)	
FINISH		APPD:	
QTY		CHKD:	
		DRWN: N. Doanue	9/23/97
TITLE:		PART NO. TRXB092DKHN-1330/T26	
SULLINS ELECTRONICS CORP		SCALE	SHEET 1 OF 1
		REV	A

MATERIAL
 INSULATOR: GLASS-REINFORCED THERMOPLASTIC,
 U194V-0 RATED.
 CONTACT: COPPER ALLOY.
 PLATING: MATING AREA- GOLD,
 SOLDER AREA- TIN/LEAD.

ELECTRICAL
 VOLTAGE RATING: 250 VAC RMS.
 CURRENT RATING: 3 AMP.
 INSULATION RESISTANCE: 1,000 MEGOHMS MIN.
 CONTACT RESISTANCE: 30 MILLIOHMS MAX.

MECHANICAL
 CONTACT RETENTION: 460 GRAMS MIN PER CONTACT.
 INSERTION FORCE: 230 GRAMS MAX PER CONTACT PAIR.
 WITHDRAWAL FORCE: 15 GRAMS MIN PER CONTACT PAIR.

ENVIRONMENTAL
 TEMPERATURE RANGE: -55° TO +85°.
 NO PART MARKINGS

GOLD PLATING
 REPLACE "X" IN THE PART NUMBER:
 W = SELECTIVE GOLD FLASH
 Z = SELECTIVE 100μ" GOLD
 X = SELECTIVE 30μ" GOLD