



Chipsmall Limited consists of a professional team with an average of over 10 year of expertise in the distribution of electronic components. Based in Hongkong, we have already established firm and mutual-benefit business relationships with customers from,Europe,America and south Asia,supplying obsolete and hard-to-find components to meet their specific needs.

With the principle of “Quality Parts,Customers Priority,Honest Operation,and Considerate Service”,our business mainly focus on the distribution of electronic components. Line cards we deal with include Microchip,ALPS,ROHM,Xilinx,Pulse,ON,Everlight and Freescale. Main products comprise IC,Modules,Potentiometer,IC Socket,Relay,Connector.Our parts cover such applications as commercial,industrial, and automotives areas.

We are looking forward to setting up business relationship with you and hope to provide you with the best service and solution. Let us make a better world for our industry!



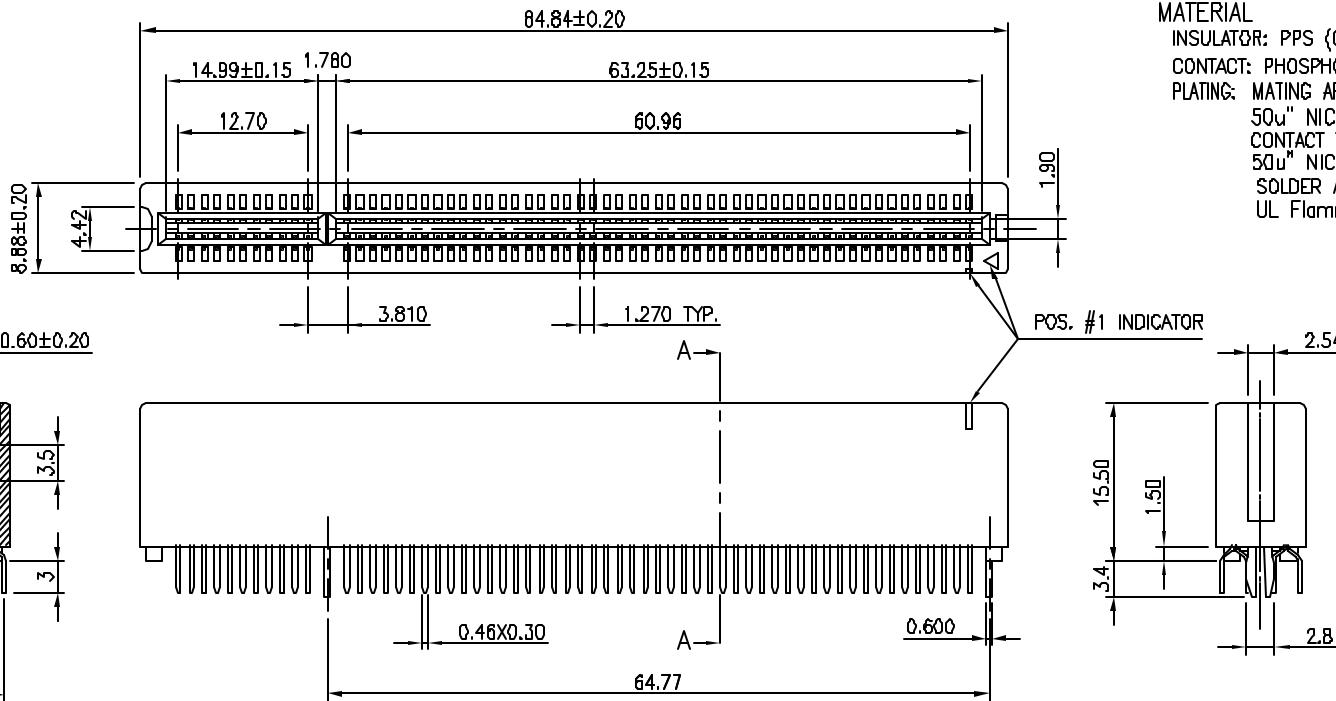
Contact us

Tel: +86-755-8981 8866 Fax: +86-755-8427 6832

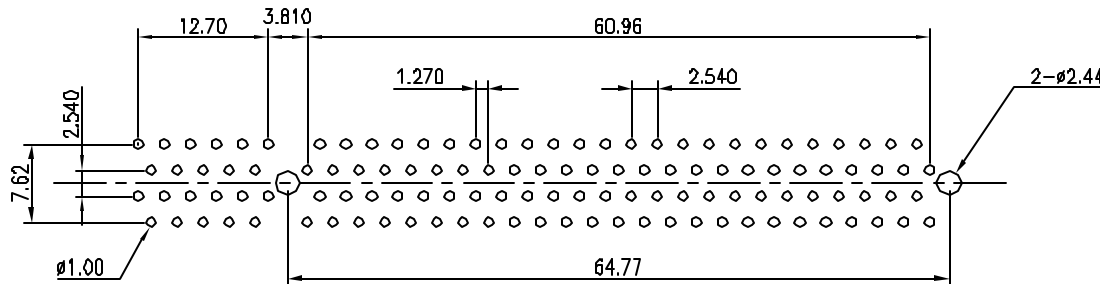
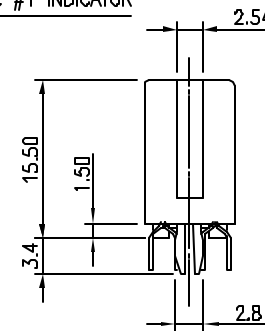
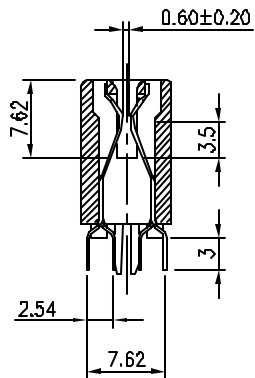
Email & Skype: info@chipsmall.com Web: www.chipsmall.com

Address: A1208, Overseas Decoration Building, #122 Zhenhua RD., Futian, Shenzhen, China





MATERIAL
 INSULATOR: PPS (GLASS-REINFORCED THERMOPLASTIC)
 CONTACT: PHOSPHOR BRONZE.
 PLATING: MATING AREA - 30u" SELECTED GOLD OVER MINIMUM
 50u" NICKEL
 CONTACT TAIL - 100u" TIN - LEAD OVER MINIMUM
 50u" NICKEL
 SOLDER AREA - TIN/LEAD OVER NICKEL.
 UL Flammability Rating: 94V-0



ELECTRICAL
 VOLTAGE RATING: 250 VAC RMS.
 CURRENT RATING: 1 AMP.
 DIELECTRIC WITHSTANDING VOLTAGE: 500 VAC RMS 60Hz FOR 1 MINUTE.
 INSULATION RESISTANCE: 1000 MEGOHMS MIN AT 500 VDC.
 CONTACT RESISTANCE: 30 MILLIOHMS MAX.

MECHANICAL
 RETENTION FORCE: 480 GRAMS MIN PER CONTACT.
 INSERTION FORCE: 230 GRAMS MAX PER CONTACT PAIR.
 WITHDRAWAL FORCE: 15 GRAMS MIN PER CONTACT PAIR.

ENVIRONMENTAL
 TEMPERATURE RANGE: -55°C TO +85°C.

				TOLERANCE		Sullins Electronics San Marcos, CA www.SullinsElectronics.com		TITLE: PCI CARDEDGE SLOT (CLIP TYPE)			
				LINEAR	ANGLES			PART NO. TRXB060DKHN-T20			
				X±0.20	X'±	APPD:	MAT'L:	DWG NO. P12005004			
				.X±0.15	.X'±	CHKD:	FINISH:	UNITS MM	SCALE 2 : 1	SHEET 1 OF 1	REV A
				.XX±0.10	.XX'±	DRWN: Jason Deng	Q'TY:				
REV	ECN NO.	NAME	DATE	.XXX±0.05	.XXX'±						