



Chipsmall Limited consists of a professional team with an average of over 10 year of expertise in the distribution of electronic components. Based in Hongkong, we have already established firm and mutual-benefit business relationships with customers from,Europe,America and south Asia,supplying obsolete and hard-to-find components to meet their specific needs.

With the principle of "Quality Parts,Customers Priority,Honest Operation,and Considerate Service",our business mainly focus on the distribution of electronic components. Line cards we deal with include Microchip,ALPS,ROHM,Xilinx,Pulse,ON,Everlight and Freescale. Main products comprise IC,Modules,Potentiometer,IC Socket,Relay,Connector.Our parts cover such applications as commercial,industrial, and automotives areas.

We are looking forward to setting up business relationship with you and hope to provide you with the best service and solution. Let us make a better world for our industry!



## Contact us

Tel: +86-755-8981 8866 Fax: +86-755-8427 6832

Email & Skype: info@chipsmall.com Web: www.chipsmall.com

Address: A1208, Overseas Decoration Building, #122 Zhenhua RD., Futian, Shenzhen, China



DIMENSIONS ARE IN INCHES		UNLESS OTHERWISE NOTED		TOLERANCES ARE:	
ONE PLACE DECIMALS ±	THREE PLACE DECIMALS ±	ANGLES ± 2°			
TWO PLACE DECIMALS ±	FOUR PLACE DECIMALS ±				

TITLE: **TERMINAL STRIP ASSEMBLY**

DWG NO: **TX-1XX-X-X**  
SHEET 1 OF 5

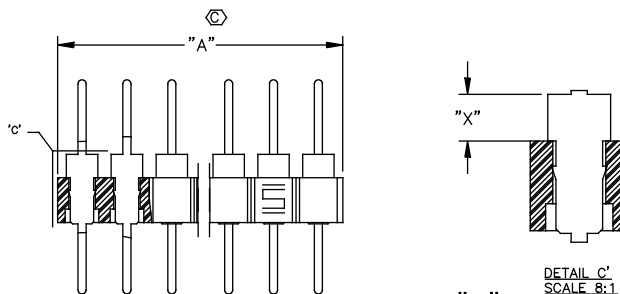


FIG "A"

TD-1XX-X-X & TS-1XX-X-B SHOWN  
(SEE NOTE 6 & 10)

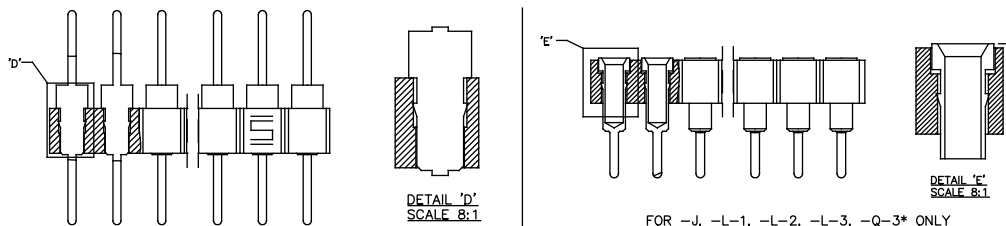


FIG "B"

TS-1XX-X-X SHOWN  
(DIFFERENT AS SHOWN, OTHERWISE SAME AS FIG "A")  
(SEE NOTE 7 & 8)

TX-1XX-X-X

**BODY SPECIFICATION**  
TS : (SEE TABLE 1)  
TD : (SEE TABLE 1)

**SERIES SPECIFICATION**  
-1 (.100 CENTERS BETWEEN POSITIONS)

**BODY LENGTH SPECIFICATION**  
-XX = NUMBER OF POSITIONS  
(TS : 32 MAX.)  
(TD : 36 MAX. (SEE NOTE 11))  
(SEE FIG. "A")

**TERMINAL STYLE**  
(SEE TABLE 1)

**PLATING SPECIFICATION**  
-G: .00020 GOLD PER MIL-G-45204 OVER .00005 NICKEL (QG-N-290), (.00001 GOLD ON STYLES -L-X, AND -J)  
-T: .000200 BRIGHT ACID TIN PER MIL-T-10727B TYPE 1, OVER .0001 MIN. COPPER.

TABLE 3

BODY SPEC.	LEAD STYLE	TUBE	PLUG	FIG
TS	A-1, A-2, A, AA, B, C, H, G-1	PT-1-24-01-24	TP-24	30
	J	PT-1-24-01-23	TP-12	31
	D-1-2	PT-1-24-02-03	TP-24	32
	D-1-1	PT-1-24-10-03	TP-03	33
TD	A-1	PT-1-24-05-17	TP-07	34
	A-2	PT-1-24-02-46		35
	A, AA	PT-1-24-01-22	TP-03	36
	J	PT-1-24-01-14		37

TABLE 2

BODY SPEC.	"A"
TS	[(-100 X NO. OF POS)+.008]±.015
TD	[(-100 X NO. OF POS)-.006]±.015

TABLE 1

TERMINAL STYLE	TERMINAL/BODY SPECIFICATION						FIG	SHEET		
	TS: SINGLE		TS BODY		TD: DOUBLE				TD BODY	
			MIN	"X" MAX					MIN	"X" MAX
-AA	T-1R5-X	SEE NOTE 7	.049[1.24]	.063[1.60]	T-1R5-X	SEE NOTE 6	.049[1.24]	.063[1.60]	1	2
-A	T-1R0-X	SEE NOTE 7	.047[1.19]	.065[1.65]	T-1R0-X	SEE NOTE 6	.047[1.19]	.065[1.65]	2	2
-A-1	T-1R7-1-X	SEE NOTE 7	.047[1.19]	.065[1.65]	T-1R7-1-X	SEE NOTE 6	.047[1.19]	.065[1.65]	3	2
-A-2	T-1R7-2-X	SEE NOTE 7	.047[1.19]	.065[1.65]	T-1R7-2-X	SEE NOTE 6	.047[1.19]	.065[1.65]	4	2
-B	T-1R1-X	SEE NOTE 10	.227[5.77]	.245[6.22]	T-1R1-X	SEE NOTE 6	.227[5.77]	.245[6.22]	5	2
-B-2	T-1R8-2-X	SEE NOTE 7	.227[5.77]	.245[6.22]	T-1R8-2-X	SEE NOTE 6	.227[5.77]	.245[6.22]	7	2
-C	T-1R2-X	SEE NOTE 7	.052[1.32]	.070[1.78]	T-1R2-X	SEE NOTE 6	.052[1.32]	.070[1.78]	8	2
-C-1	T-1R9-1-X	SEE NOTE 7	.052[1.32]	.070[1.78]	T-1R9-1-X	SEE NOTE 6	.052[1.32]	.070[1.78]	9	2
-C-2	T-1R9-2-X	SEE NOTE 7	.052[1.32]	.070[1.78]	T-1R9-2-X	SEE NOTE 6	.052[1.32]	.070[1.78]	10	2
-D-1-1	T-1S4-1-1-X	SEE NOTE 7	.047[1.19]	.062[1.57]	T-1S4-1-1-X	SEE NOTE 6	.047[1.19]	.062[1.57]	11	3
-D-1-2	T-1S4-1-2-X	SEE NOTE 7	.047[1.19]	.082[2.08]	T-1S4-1-2-X	SEE NOTE 6	.047[1.19]	.082[2.08]	12	3
-E	T-1R12-X	SEE NOTE 7	.047[1.19]	.082[1.57]	N/A				17	3
-G-1	T-1R5-1-X	SEE NOTE 7	.017[0.43]	.028[0.71]	T-1R5-1-X	SEE NOTE 6	.017[0.43]	.028[0.71]	19	3
-J	S-1P1-X	SEE NOTE 8	.009[0.00]	.008[0.20]	S-1P1-X	SEE NOTE 6	.029[0.74]	.039[0.99]	21	4
-K	T-1R12-X	SEE NOTE 7	.047[1.19]	.062[1.57]	T-1R12-X	SEE NOTE 6	.047[1.19]	.062[1.57]	22	4
-L-1	S-1W1-1-X	SEE NOTE 8	.000[0.00]	.005[0.13]	S-1W1-1-X	SEE NOTE 6	.029[0.74]	.039[0.99]	23	4
-L-2	S-1W1-2-X	SEE NOTE 8	.000[0.00]	.005[0.13]	S-1W1-2-X	SEE NOTE 6	.029[0.74]	.039[0.99]	24	4
-L-3	S-1W1-3-X	SEE NOTE 8	.000[0.00]	.005[0.13]	S-1W1-3-X	SEE NOTE 6	.029[0.74]	.039[0.99]	25	4
-N	T-1R5-1-X	SEE NOTE 7	.017[0.43]	.028[0.71]	N/A				27	4
-Q-3 *	S-1W1-3-X	SEE NOTE 7	.000[0.00]	.005[0.13]	N/A				29	4

N/A = NOT AVAILABLE \* STYLE -Q-3 AVAILABLE ONLY AS A COMPONENT OF CSP/25 CABLE ASSEMBLIES.

**\*PROPRIETARY NOTE\***  
THIS DOCUMENT CONTAINS CONFIDENTIAL AND PROPRIETARY INFORMATION AND ALL DESIGN, MANUFACTURING, REPRODUCTION, USE, PATENT RIGHTS AND SALES RIGHTS ARE EXPRESSLY RESERVED BY SAMTEC, INC. THIS DOCUMENT SHALL NOT BE DISCLOSED, IN WHOLE OR IN PART, TO ANY UNAUTHORIZED PERSON OR ENTITY, NOR REPRODUCED, TRANSMITTED OR INCORPORATED IN ANY OTHER PRODUCT BY ANY MEANS, WITHOUT THE EXPRESS WRITTEN CONSENT OF SAMTEC, INC.

- NOTE:
- SEE COMPONENT PRINT FOR MAXIMUM ALLOWABLE BOW.
  - MINIMUM PUSHOUT FORCE = 5 LBS.
  - MAXIMUM ALLOWABLE TOE IN/OUT OF TERMINALS = ± 2°.
  - MAX ALLOWABLE FLASH AFTER REMOVAL OF CROSS BARS: .005 [1.13]
  - Ⓞ REPRESENTS A CRITICAL DIMENSION.
  - USE DSB-36 AND FILL WITH COUNTERBORE DOWN.
  - USE TBS-32 AND FILL WITH COUNTERBORE UP.
  - USE SSB-XX AND FILL WITH COUNTERBORE UP.
  - FOR LEAD STYLES PACKAGED IN TUBES: PACKAGE -05 THRU -36 POSITIONS IN TUBES; LAYER PACKAGE SMALLER POSITIONS.
  - USE SSB-XX AND FILL WITH COUNTERBORE DOWN.
  - FOR 1 POSITION TD ASSEMBLY, USE A TS-132 AND CUT TO A 2 POSITION.

MATERIAL:  
INSULATOR:  
GLASS FILLED POLYESTER  
COLOR: BLACK

TERMINAL:  
BRASS, EXCEPT STYLE G  
IS PHOSPHOR BRONZE

EXISPROD/ASSEMBLY100  
TX-ASM1

520 PARK EAST BLVD. NEW ALBANY, INDIANA 47150  
PHONE (812) 944-6733 P.O. BOX 1147  
CODE 53322