



Chipsmall Limited consists of a professional team with an average of over 10 year of expertise in the distribution of electronic components. Based in Hongkong, we have already established firm and mutual-benefit business relationships with customers from,Europe,America and south Asia,supplying obsolete and hard-to-find components to meet their specific needs.

With the principle of “Quality Parts,Customers Priority,Honest Operation,and Considerate Service”,our business mainly focus on the distribution of electronic components. Line cards we deal with include Microchip,ALPS,ROHM,Xilinx,Pulse,ON,Everlight and Freescale. Main products comprise IC,Modules,Potentiometer,IC Socket,Relay,Connector.Our parts cover such applications as commercial,industrial, and automotives areas.

We are looking forward to setting up business relationship with you and hope to provide you with the best service and solution. Let us make a better world for our industry!



Contact us

Tel: +86-755-8981 8866 Fax: +86-755-8427 6832

Email & Skype: info@chipsmall.com Web: www.chipsmall.com

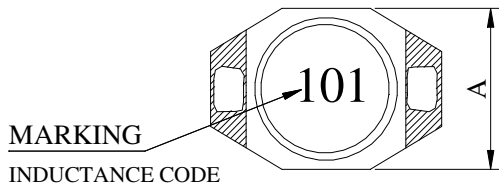
Address: A1208, Overseas Decoration Building, #122 Zhenhua RD., Futian, Shenzhen, China



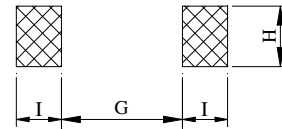
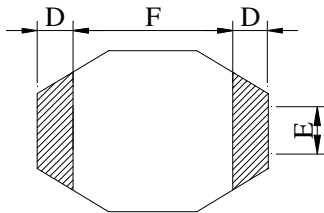
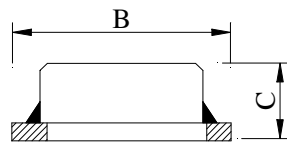
PRODUCT SPECIFICATION

Product Name	1608 SMD POWER INDUCTORS - SHIELDED TYPE	Page	1
TAMURA Part No.	TS1608-XXX	Rev. No.	0

1. CONFIGURATION & DIMENSIONS :

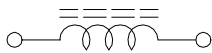


A	: 4.45 MAX	m/m
B	: 6.60 MAX	m/m
C	: 2.92 MAX	m/m
D	: 1.02±0.2	m/m
E	: 1.27±0.2	m/m
F	: 4.32±0.3	m/m
G	: 4.06 REF.	m/m
H	: 3.56 REF.	m/m
I	: 1.40 REF.	m/m



PCB PATTERN

2. SCHEMATIC DIAGRAM :



3. GENERAL SPECIFICATION :

- a) TEMP. RISE : 40°C MAX.
- b) RATED CURRENT : BASE ON TEMP. RISE & $\Delta L / LOA=10\%$ MAX.
- c) STORAGE TEMP. : -40°C ----+105°C
- d) OPERATING TEMP. : -25°C----+85°C
- e) RESISTANCE TO SOLDER HEAT : 260°C FOR 10 SECS.

PRODUCT SPECIFICATION

Product Name	1608 SMD POWER INDUCTORS - SHIELDED TYPE	Page	2
TAMURA Part No.	TS1608-XXX	Rev. No.	0

4. ELECTRICAL CHARACTERISTICS :

TAMURA Part No.	INDUCTANCE (μ H)	Q MIN.	TEST FREQ. (HZ)		SRF (MHz) TYP.	RDC (Ohm) MAX	IDC (A) MAX
			L	Q			
TS1608-1R0M	1.0 \pm 20%	30	100K	200K	250	0.040	3.0
TS1608-1R5M	1.5 \pm 20%	30	100K	200K	125	0.045	2.8
TS1608-2R2M	2.2 \pm 20%	40	100K	200K	120	0.050	1.8
TS1608-3R3M	3.3 \pm 20%	40	100K	200K	120	0.055	1.6
TS1608-4R7M	4.7 \pm 20%	40	100K	200K	105	0.060	1.4
TS1608-6R8M	6.8 \pm 20%	40	100K	200K	50	0.065	1.2
TS1608-100M	10.0 \pm 20%	40	100K	200K	38	0.075	1.0
TS1608-150M	15.0 \pm 20%	40	100K	100K	33	0.090	0.80
TS1608-220M	22.0 \pm 20%	40	100K	100K	25	0.110	0.70
TS1608-330M	33.0 \pm 20%	40	100K	100K	20	0.190	0.60
TS1608-470M	47.0 \pm 20%	40	100K	100K	20	0.230	0.50
TS1608-680M	68.0 \pm 20%	40	100K	100K	15	0.290	0.40
TS1608-101M	100.0 \pm 20%	40	100K	100K	10	0.480	0.30
TS1608-151M	150.0 \pm 20%	40	100K	100K	9	0.590	0.26
TS1608-221M	220.0 \pm 20%	40	100K	100K	6	0.770	0.22
TS1608-331M	330.0 \pm 20%	40	100K	100K	5	1.400	0.20
TS1608-471M	470.0 \pm 20%	40	100K	100K	4	1.800	0.19
TS1608-681M	680.0 \pm 20%	40	100K	100K	3	2.200	0.18
TS1608-102M	1000.0 \pm 20%	40	100K	100K	2	3.400	0.15
TS1608-152M	1500.0 \pm 20%	50	100K	100K	2	4.200	0.12
TS1608-222M	2200.0 \pm 20%	50	100K	100K	2	8.500	0.10
TS1608-332M	3300.0 \pm 20%	50	100K	100K	1	11.000	0.08
TS1608-472M	4700.0 \pm 20%	50	100K	100K	1	13.900	0.06
TS1608-682M	6800.0 \pm 20%	50	100K	100K	1	25.000	0.04
TS1608-103M	10000.0 \pm 20%	50	100K	100K	0.8	32.800	0.02

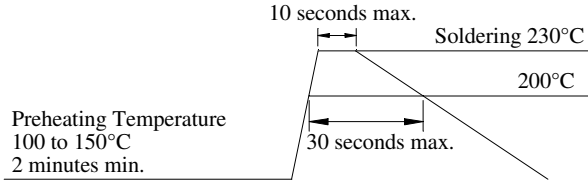


TAMURA

PRODUCT SPECIFICATION

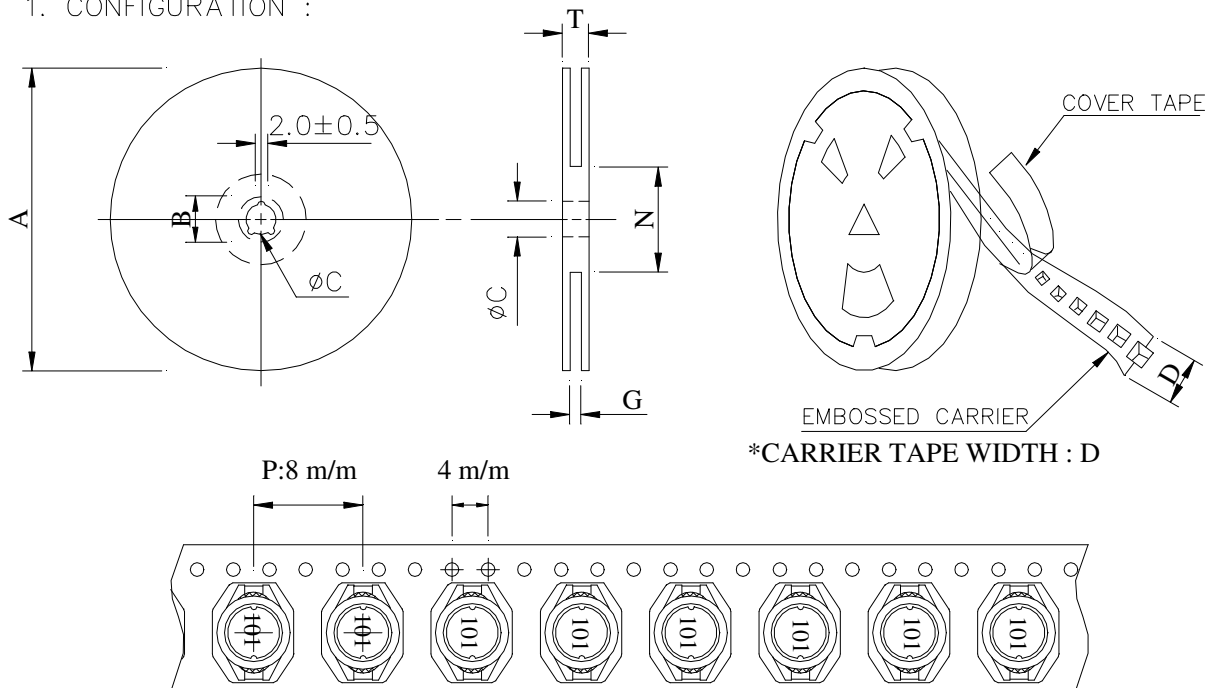
Product Name	1608 SMD POWER INDUCTORS - SHIELDED TYPE	Page	3
TAMURA Part No.	TS1608-XXX	Rev. No.	0

RECOMMENDED SOLDERING CONDITIONS REFLOW SOLDERINGS



5. PACKAGING INFORMATION :

1. CONFIGURATION :



(2) DIMENSIONS

Unit:m/m

STYLE	A	B	C	D	G	N	T
13 - 12	330	21	13	12	12.4	100 MIN	18.4

(3) Q'TY & G.W. PER PACKAGE

SERIES	INNER : REEL			OUTER : CARTON		
	Q'TY (PCS)	G.W. (gw)	STYLE	Q'TY (PCS)	G.W. (Kg)	SIZE (cm)
TS1608	2,500	825	13 - 12	30,000	10.5	40 x 20 x 26

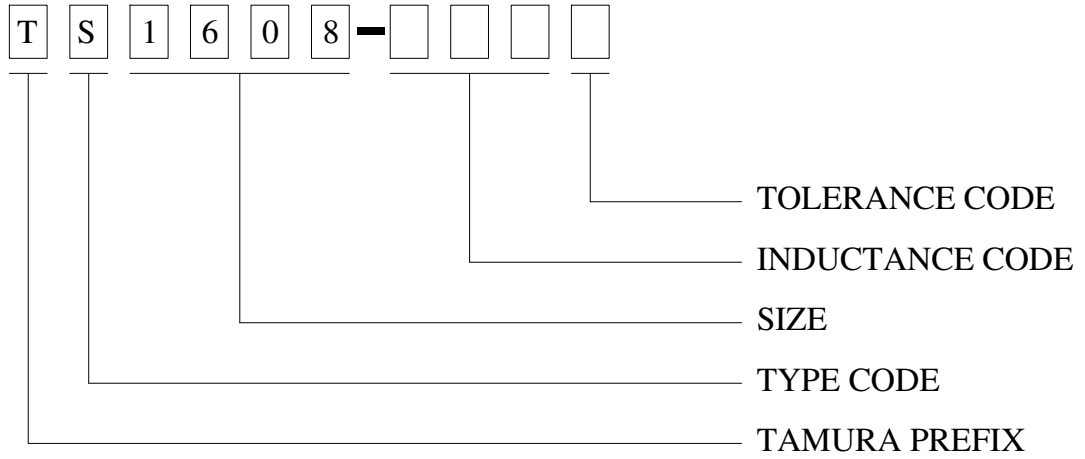


TAMURA

PRODUCT SPECIFICATION

Product Name	1608 SMD POWER INDUCTORS - SHIELDED TYPE	Page	4
TAMURA Part No.	TS1608-XXX	Rev. No.	0

6. Part No. FORMAT :



TAMURA

PRODUCT SPECIFICATION

Product Name	1608 SMD POWER INDUCTORS - SHIELDED TYPE	Page	5
TAMURA Part No.	TS1608-XXX	Rev. No.	0

7. RELIABILITY TEST :

TEST ITEM	SPECIFICATION	TEST CONDITION
SOLDERABILITY	MORE THAN 90% OF THE TERMINAL ELECTRODE SHALL BE COVERED WITH FRESH SOLDER.	PREHEAT : 125±25°C FOR 60 SECONDS SOLDER : H63A (EUTECTIC SOLDER) SOLDER TEMP. : 230±5°C FLUX : ROSIN DIP TIME : 4±1 SECONDS
THERMAL SHOCK TEST (TEMP. CYCLE)	INDUCTANCE SHALL NOT CHANGE MORE THAN ±20%	ROOM TEMP. —————> $\frac{-25\pm 2^{\circ}\text{C}}{30 \text{ MINUTES}}$ 15 MINUTES
		ROOM TEMP. —————> $\frac{85\pm 2^{\circ}\text{C}}{30 \text{ MINUTES}}$ 15 MINUTES
		TOTAL : 50 CYCLES
HUMIDITY RESISTANCE TEST		TEMPERATURE : 40±2°C HUMIDITY : 90 ~ 95% APPLIED CURRENT : PER SPEC. TIME : 500 HOURS
HIGH TEMP. RESISTANCE TEST	TEMPERATURE : 85±2°C APPLIED CURRENT : PER SPEC. TIME : 500 HOURS	



TAMURA