



Chipsmall Limited consists of a professional team with an average of over 10 year of expertise in the distribution of electronic components. Based in Hongkong, we have already established firm and mutual-benefit business relationships with customers from,Europe,America and south Asia,supplying obsolete and hard-to-find components to meet their specific needs.

With the principle of “Quality Parts,Customers Priority,Honest Operation,and Considerate Service”,our business mainly focus on the distribution of electronic components. Line cards we deal with include Microchip,ALPS,ROHM,Xilinx,Pulse,ON,Everlight and Freescale. Main products comprise IC,Modules,Potentiometer,IC Socket,Relay,Connector.Our parts cover such applications as commercial,industrial, and automotives areas.

We are looking forward to setting up business relationship with you and hope to provide you with the best service and solution. Let us make a better world for our industry!



Contact us

Tel: +86-755-8981 8866 Fax: +86-755-8427 6832

Email & Skype: info@chipsmall.com Web: www.chipsmall.com

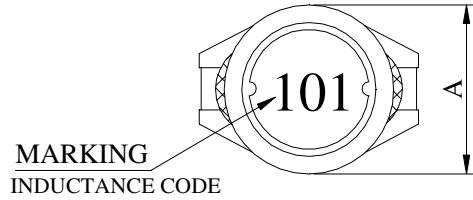
Address: A1208, Overseas Decoration Building, #122 Zhenhua RD., Futian, Shenzhen, China



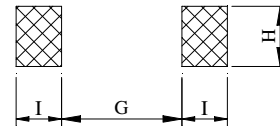
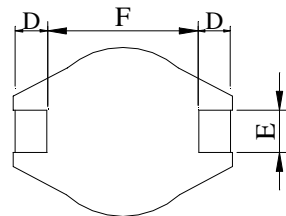
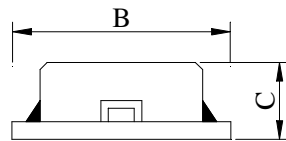
PRODUCT SPECIFICATION

Product Name	5022 SMD POWER INDUCTORS - SHIELDED TYPE	Page	1
TAMURA Part No.	TS5022-XXX	Rev. No.	0

1. CONFIGURATION & DIMENSIONS :

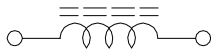


A :	15.00±0.3	m/m
B :	18.40±0.3	m/m
C :	7.00±0.5	m/m
D :	2.40±0.2	m/m
E :	2.20±0.2	m/m
F :	13.30±0.3	m/m
G :	12.70 REF.	m/m
H :	2.80 REF.	m/m
I :	3.00 REF.	m/m



PCB PATTERN

2. SCHEMATIC DIAGRAM :



3. GENERAL SPECIFICATION :

- a) TEMP. RISE : 40°C MAX.
- b) RATED CURRENT : BASE ON TEMP. RISE & $\Delta L / LOA=10\%$ MAX.
- c) STORAGE TEMP. : -40°C ----+105°C
- d) OPERATING TEMP. : -25°C----+85°C
- e) RESISTANCE TO SOLDER HEAT : 260°C FOR 10 SECS.

PRODUCT SPECIFICATION

Product Name	5022 SMD POWER INDUCTORS - SHIELDED TYPE	Page	2
TAMURA Part No.	TS5022-XXX	Rev. No.	0

4. ELECTRICAL CHARACTERISTICS :

TAMURA Part No.	INDUCTANCE (μ H)	Q REF.	TEST FREQ. (HZ)		SRF (MHz) TYP.	RDC (mOhm) MAX	IDC (A)
			L	Q			
TS5022-100M	10 \pm 20%	70	100K		20.0	30	4.00
TS5022-150M	15 \pm 20%	55	100K		17.0	35	3.60
TS5022-220M	22 \pm 20%	45	100K		15.0	45	3.15
TS5022-330M	33 \pm 20%	55	100K		10.0	60	2.80
TS5022-470M	47 \pm 20%	45	100K		8.5	80	2.45
TS5022-680M	68 \pm 20%	50	100K		6.5	115	2.00
TS5022-101M	100 \pm 20%	70	100K		5.5	180	1.70
TS5022-151M	150 \pm 20%	60	100K		5.0	220	1.35
TS5022-221M	220 \pm 20%	65	100K		4.0	320	1.15
TS5022-331M	330 \pm 20%	80	100K		3.0	500	0.90
TS5022-471M	470 \pm 20%	90	100K		2.5	750	0.75
TS5022-681M	680 \pm 20%	100	100K		2.3	1100	0.65
TS5022-102M	1000 \pm 20%	90	100K		1.9	1500	0.55

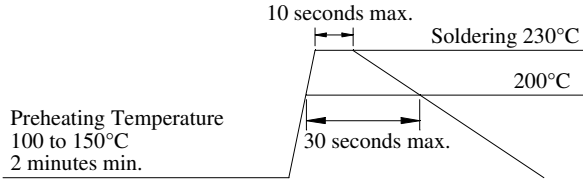


TAMURA

PRODUCT SPECIFICATION

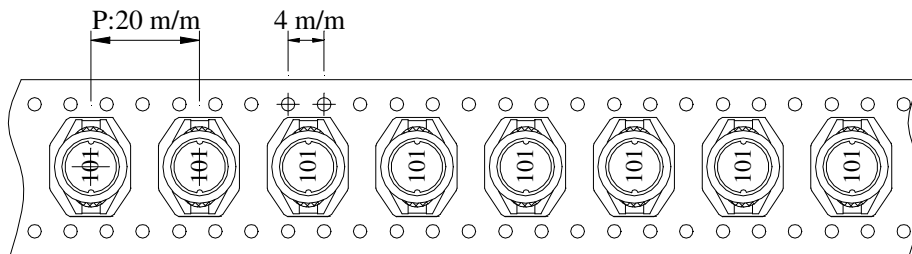
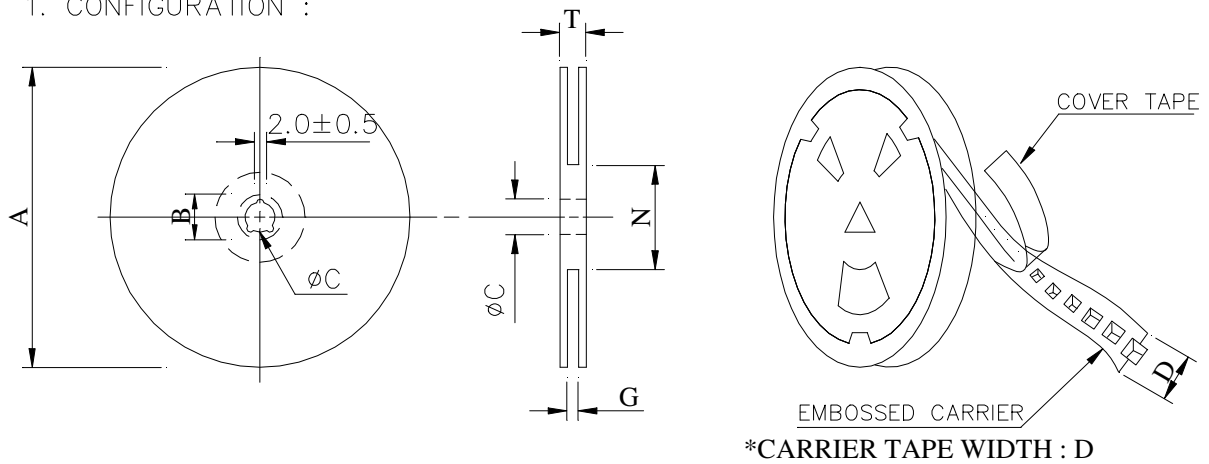
Product Name	5022 SMD POWER INDUCTORS - SHIELDED TYPE	Page	3
TAMURA Part No.	TS5022-XXX	Rev. No.	0

RECOMMENDED SOLDERING CONDITIONS REFLOW SOLDERINGS



5. PACKAGING INFORMATION :

1. CONFIGURATION :



(2) DIMENSIONS

Unit:m/m

STYLE	A	B	C	D	G	N	T
13 - 32	330	21±0.8	13±0.5	32	34 MAX	100 MAX	38.4

(3) Q'TY & G.W. PER PACKAGE

SERIES	INNER : REEL			OUTER : CARTON		
	Q'TY (PCS)	G.W. (gw)	STYLE	Q'TY (PCS)	G.W. (Kg)	SIZE (cm)
TS5022	250	1250	13 - 32	1000	5	40 x 40 x 26

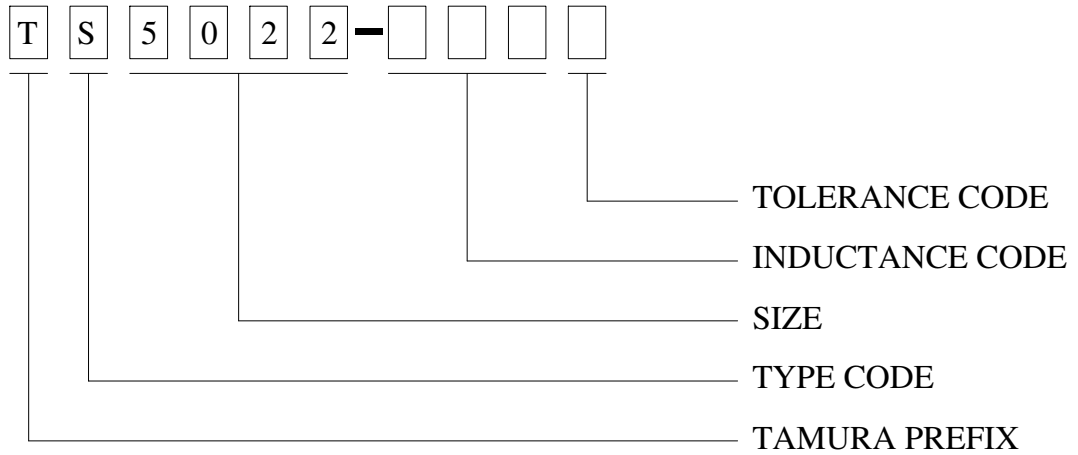


TAMURA

PRODUCT SPECIFICATION

Product Name	5022 SMD POWER INDUCTORS - SHIELDED TYPE	Page	4
TAMURA Part No.	TS5022-XXX	Rev. No.	0

6. Part No. FORMAT :



TAMURA

PRODUCT SPECIFICATION

Product Name	5022 SMD POWER INDUCTORS - SHIELDED TYPE	Page	5
TAMURA Part No.	TS5022-XXX	Rev. No.	0

7. RELIABILITY TEST :

TEST ITEM	SPECIFICATION	TEST CONDITION
SOLDERABILITY	MORE THAN 90% OF THE TERMINAL ELECTRODE SHALL BE COVERED WITH FRESH SOLDER.	PREHEAT : 125±25°C FOR 60 SECONDS SOLDER : H63A (EUTECTIC SOLDER) SOLDER TEMP. : 230±5°C FLUX : ROSIN DIP TIME : 4±1 SECONDS
THERMAL SHOCK TEST (TEMP. CYCLE)	INDUCTANCE SHALL NOT CHANGE MORE THAN ±20%	ROOM TEMP. —————> <u>-25±2°C</u> 15 MINUTES 30 MINUTES ROOM TEMP. —————> <u>85±2°C</u> 15 MINUTES 30 MINUTES TOTAL : 50 CYCLES
HUMIDITY RESISTANCE TEST		TEMPERATURE : 40±2°C HUMIDITY : 90 ~ 95% APPLIED CURRENT : PER SPEC. TIME : 500 HOURS
HIGH TEMP. RESISTANCE TEST		TEMPERATURE : 85±2°C APPLIED CURRENT : PER SPEC. TIME : 500 HOURS



TAMURA