



Chipsmall Limited consists of a professional team with an average of over 10 year of expertise in the distribution of electronic components. Based in Hongkong, we have already established firm and mutual-benefit business relationships with customers from,Europe,America and south Asia,supplying obsolete and hard-to-find components to meet their specific needs.

With the principle of "Quality Parts,Customers Priority,Honest Operation,and Considerate Service",our business mainly focus on the distribution of electronic components. Line cards we deal with include Microchip,ALPS,ROHM,Xilinx,Pulse,ON,Everlight and Freescale. Main products comprise IC,Modules,Potentiometer,IC Socket,Relay,Connector.Our parts cover such applications as commercial,industrial, and automotives areas.

We are looking forward to setting up business relationship with you and hope to provide you with the best service and solution. Let us make a better world for our industry!



Contact us

Tel: +86-755-8981 8866 Fax: +86-755-8427 6832

Email & Skype: info@chipsmall.com Web: www.chipsmall.com

Address: A1208, Overseas Decoration Building, #122 Zhenhua RD., Futian, Shenzhen, China



REVISION CL

DO NOT SCALE FROM THIS PRINT

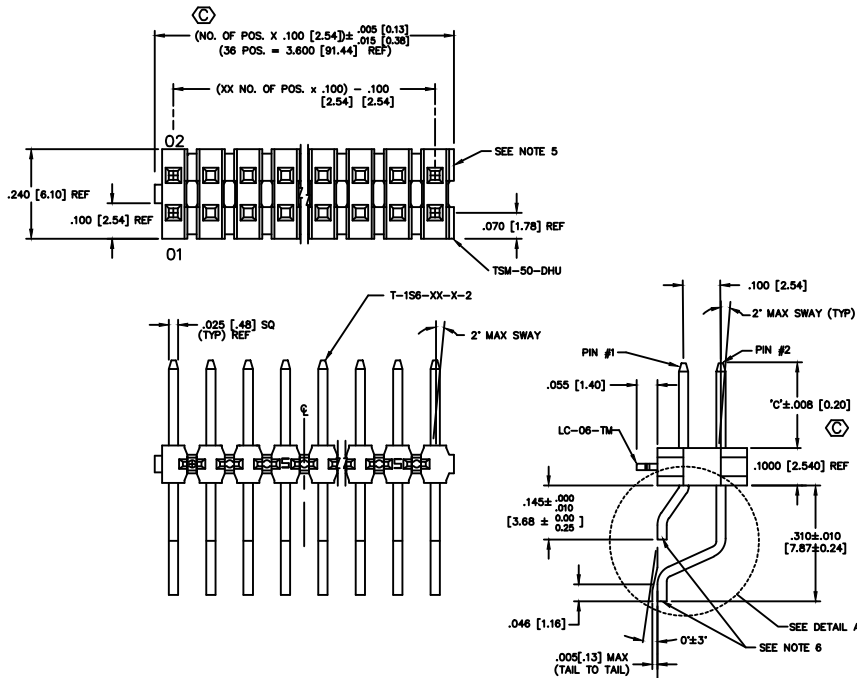
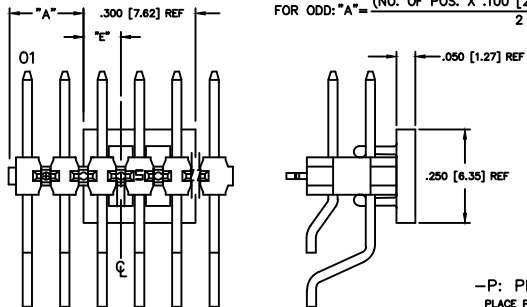


FIG 1

-LC: LOCKING CLIP OPTION
CLIPS N/A WITH -A OPTION.

DIFFERENT AS SHOWN, OTHERWISE SAME AS FIG 1.

FOR EVEN: "A" = $\frac{(\text{NO. OF POS. X } .100 [2.54]) - .300 [7.62]}{2} + .050 [1.27]$
 FOR ODD: "A" = $\frac{(\text{NO. OF POS. X } .100 [2.54]) - .300 [7.62]}{2}$



POS.	"E"
ODD	.150 [3.81]
EVEN	.100 [2.54]

FIG 3

-P: PICK & PLACE PAD
PLACE PPP-08 ON ϕ AS SHOWN

NO OF POS	S/S BOW
02 - 10	.0030 [0.80]
11 - 20	.0050 [1.27]
21 - 30	.0070 [1.78]
31 - 36	.0080 [2.03]

DIMENSIONS ARE IN INCHES		UNLESS OTHERWISE NOTED		TOLERANCES ARE:		TITLE:	DWG NO:
ONE PLACE DECIMALS ± .1 [3]	THREE PLACE DECIMALS ± .005 [13]	ANGLES	± 2°			TERMINAL STRIP DOUBLE SURFACE MOUNT	TSM-1XX-XX-XXX-XX-XX-XXX-XX
TWO PLACE DECIMALS ± .01 [3]	FOUR PLACE DECIMALS ± .0020 [0.051]						SHEET 1 OF 3

TSM-1XX-XX-XXX-XX-XX-XXX-XX

NO. OF POSITIONS
-02 THRU -36
LEAD STYLE
(SEE TABLE 1)

- OPTION #3
-P: PICK & PLACE PAD, SEE FIG 3 (USE PPP-08) (AVAILABLE ON POS -05 THRU -36) (AVAILABLE ON POS -02 THRU -04 WITH -TR OPTION ONLY) (NOT AVAILABLE WITH -K OPTION)
-TR: TAPE & REEL (29 POS MAX) (AVAILABLE FOR -DH ONLY)
-K: POLYIMIDE FILM (SEE FIG 5, SHT 2) (NOT AVAILABLE WITH -P OPTION) (USE K-DOT-197-344-.005) (AVAILABLE ON POS -04 THRU -36) (AVAILABLE ON POS -02 THRU -03 WITH -TR OPTION ONLY)
- OPTION #2
POLARIZED POSITION: SPECIFY OMITTED PIN

PLATING SPECIFICATION

- T: MATTE TIN CONTACT AND TAIL
- S: 30μ" SELECTIVE GOLD IN CONTACT AREA, MATTE TIN ON TAIL
- L: 10μ" SELECTIVE GOLD IN CONTACT AREA, MATTE TIN ON TAIL
- F: 3μ" FLASH SELECTIVE GOLD IN CONTACT AREA, MATTE TIN ON TAIL
- H: 30μ" HEAVY GOLD IN CONTACT AREA, 3μ" FLASH GOLD ON TAIL
- TL: TIN/LEAD (90/10+/-5) CONTACT AND TAIL
- STL: 30μ" SELECTIVE GOLD, ON CONTACT, TIN/LEAD (90/10+/-5) TAIL
- SM: 30μ" SELECTIVE GOLD, IN CONTACT AREA, MATTE TIN ON TAIL
- LM: 10μ" LIGHT SELECTIVE GOLD IN CONTACT AREA, MATTE TIN ON TAIL
- FM: 3μ" FLASH SELECTIVE GOLD, IN CONTACT AREA, MATTE TIN ON TAIL
- TM: MATTE TIN CONTACT AND TAIL
- SS: 30μ" STRIPED SELECTIVE GOLD IN CONTACT, MATTE TIN ON TAIL (SEE NOTE 14)

ROW OPTION

- DH: DOUBLE HORIZONTAL (USE TSM-50-DHU)
- MT: MIXED TECHNOLOGY (SEE FIG. 4 & TABLE 1) (NOT AVAILABLE WITH -LC, -SL, -TR OR -A OPTIONS)

NOTES:

1. ϕ REPRESENTS A CRITICAL DIMENSION.
2. DELETED
3. DELETED
4. DELETED
5. .005 [0.13] MAX CUT FLASH.
6. .002 [0.51] MAX BURR. MUST BE AWAY FROM SMT BOARD SIDE.
7. DELETED
8. CUT TO POSITION BODIES TO BE MULTI-CUT OR ROTO-CUT ONLY, NEVER AIR CUT.
9. TUBE POSITIONS 5-36, BULK PACKAGE POSITIONS 2-4.
10. 3 LBS. MIN PUSHOUT FORCE.
11. -04 LEAD STYLE DOES NOT MATE WITH SSM-DH.
12. ORIENTATION OF PART IN TAPE AND REEL TO BE CONTROLLED BY POCKET DESIGN.
13. DUE TO THE HIGH AMOUNT OF INSERTION FORCE NEEDED, THE -LC OPTION IS NOT COMPATIBLE WITH AUTO PLACEMENT. SAMTEC RECOMMENDS MANUAL PLACEMENT FOR ALL ASSEMBLIES WITH THE -LC OPTION.
14. -SS OPTION ONLY AVAILABLE IN LEAD STYLE -01 AND CAN ONLY MATE WITH SSW, SSO, SSM, ESW, ESQ AND BCS.

TABLE 1

ROW OPTION	LEAD STYLE	BOTTOM ROW PIN #1	TOP ROW PIN #2	"c"
-DH	-01	T-156-08-X-2	T-156-10-X-2	.230 [5.84]
-DH	-02	T-156-09-X-2	T-156-11-X-2	.320 [8.13]
-DH	-03	T-156-09-X-2	T-156-20-X-2	.420 [10.67]
-DH	-04 (SEE NOTE 11)	T-156-08-X-2	T-156-09-X-2	.120 [3.05]
-MT	-01	T-156-08-X-2	T-156-20-X-2	.230 [5.84]
-MT	-02	T-156-15-X-2	T-156-20-X-2	.320 [8.13]
-MT	-03	T-156-09-X-2	T-156-20-X-2	.420 [10.67]

MATERIAL:
INSULATOR:
LCP, UL 94 VO
COLOR: BLACK
TERMINALS:
PHOSPHOR BRONZE

EXISPROD ASSEMBLY/100
TSM/DH
samtec

520 PARK EAST BLVD, NEW ALBANY, INDIANA 47150
PHONE (812) 944-6733 P.O. BOX 1147
CODE 55322

MADE BY: BRATCHER 7-27-85

TSM-1XX-XX-XXX-XX-XX-XXX-XX
SHEET 1 OF 3

PROPRIETARY NOTE
THIS DOCUMENT CONTAINS INFORMATION THAT IS UNCLASSIFIED EXCEPT WHERE SHOWN OTHERWISE. IT IS THE PROPERTY OF SAMTEC AND IS LOANED TO YOU BY SAMTEC. IT IS TO BE USED ONLY FOR THE PROJECT AND FOR THE PERIOD OF TIME SPECIFIED IN THE LOAN AGREEMENT. IT IS NOT TO BE REPRODUCED, COPIED, OR DISSEMINATED IN ANY MANNER WITHOUT THE WRITTEN PERMISSION OF SAMTEC.