



Chipsmall Limited consists of a professional team with an average of over 10 year of expertise in the distribution of electronic components. Based in Hongkong, we have already established firm and mutual-benefit business relationships with customers from,Europe,America and south Asia,supplying obsolete and hard-to-find components to meet their specific needs.

With the principle of “Quality Parts,Customers Priority,Honest Operation,and Considerate Service”,our business mainly focus on the distribution of electronic components. Line cards we deal with include Microchip,ALPS,ROHM,Xilinx,Pulse,ON,Everlight and Freescale. Main products comprise IC,Modules,Potentiometer,IC Socket,Relay,Connector.Our parts cover such applications as commercial,industrial, and automotives areas.

We are looking forward to setting up business relationship with you and hope to provide you with the best service and solution. Let us make a better world for our industry!



Contact us

Tel: +86-755-8981 8866 Fax: +86-755-8427 6832

Email & Skype: info@chipsmall.com Web: www.chipsmall.com

Address: A1208, Overseas Decoration Building, #122 Zhenhua RD., Futian, Shenzhen, China



Specification Status: RELEASED

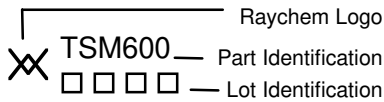
Max Electrical Rating at 20°C

Operating Voltage: 250V_{DC}
Interrupt Current: 3A_{RMS}

Fault Voltage: 600V_{RMS}

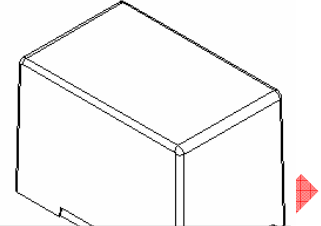
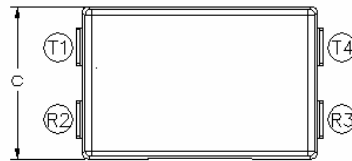
Lead Material: Tin plated brass
Configuration: Two PPTC devices per TSM600 part
Case Material: Nylon Resin (UL94 V-0) 1000V dielectric rating

Marking:



Terminal Description:

T1 = Tip In T4 = Tip Out
R2 = Ring In R3 = Ring Out



Not to be used for new designs.
For new designs please use TSM600-250F-RA

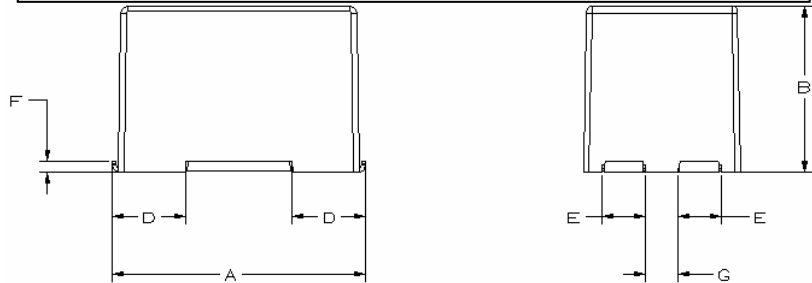


TABLE I. DIMENSIONS:

| | A | | B | | C | | D | | E | | F | | G | |
|-----|---------|---------|---------|---------|---------|---------|---------|---------|---------|---------|---------|---------|---------|---------|
| mm: | MIN | MAX | MIN | MAX | MIN | MAX | MIN | MAX | MIN | MAX | MIN | MAX | MIN | MAX |
| in: | (0.671) | (0.691) | (0.440) | (0.460) | (0.410) | (0.440) | (0.187) | (0.203) | (0.099) | (0.111) | (0.022) | (0.038) | (0.087) | (0.122) |

TABLE II. PERFORMANCE RATINGS @ 20°C (unless otherwise noted):

| I _{HOLD} (A) | | RESISTANCE (Ω)** @ 20°C | | | TIME TO TRIP @ 3 A (Seconds) | | OPERATING TEMPERATURE (°C) | | Tripped State Power Dissipation @ 250V (Watts) TYPICAL |
|-----------------------|-------|-------------------------|-------|----------------------|------------------------------|-----|----------------------------|-----|--|
| 20°C | 60°C | R MIN | R TYP | R _{1 MAX} * | TYP | MAX | MIN | MAX | |
| 0.250 | 0.140 | 1.0 | 3.0 | 5.0 | 1 | 6 | -40 | 85 | 2 |

* Maximum device resistance, measured 1-hour post reflow or post trip.

** Resistance per PPTC device.

Additional Ratings @ 20°C

Resistance Matched: 0.5 Ohm measured 24 hours after reflow installation Storage Temperature: -40° to 85° C

Line Balance: 0.5 Ohm, 59 dB @ 4 kHz minimum*** Storage Humidity: Per IPC/JEDEC J-STD-020A Level 2a

***Tested in accordance with IEEE 455 with a device having a series longitudinal balance value of at least 60dB.

Agency Recognition: UL, CSA
Reference Documents: PS300
Precedence: This specification takes precedence over documents referenced herein.
Effectivity: Reference documents shall be the issue in effect on the date of invitation for bid.