



Chipsmall Limited consists of a professional team with an average of over 10 year of expertise in the distribution of electronic components. Based in Hongkong, we have already established firm and mutual-benefit business relationships with customers from,Europe,America and south Asia,supplying obsolete and hard-to-find components to meet their specific needs.

With the principle of "Quality Parts,Customers Priority,Honest Operation,and Considerate Service",our business mainly focus on the distribution of electronic components. Line cards we deal with include Microchip,ALPS,ROHM,Xilinx,Pulse,ON,Everlight and Freescale. Main products comprise IC,Modules,Potentiometer,IC Socket,Relay,Connector.Our parts cover such applications as commercial,industrial, and automotives areas.

We are looking forward to setting up business relationship with you and hope to provide you with the best service and solution. Let us make a better world for our industry!



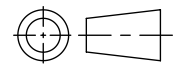
Contact us

Tel: +86-755-8981 8866 Fax: +86-755-8427 6832

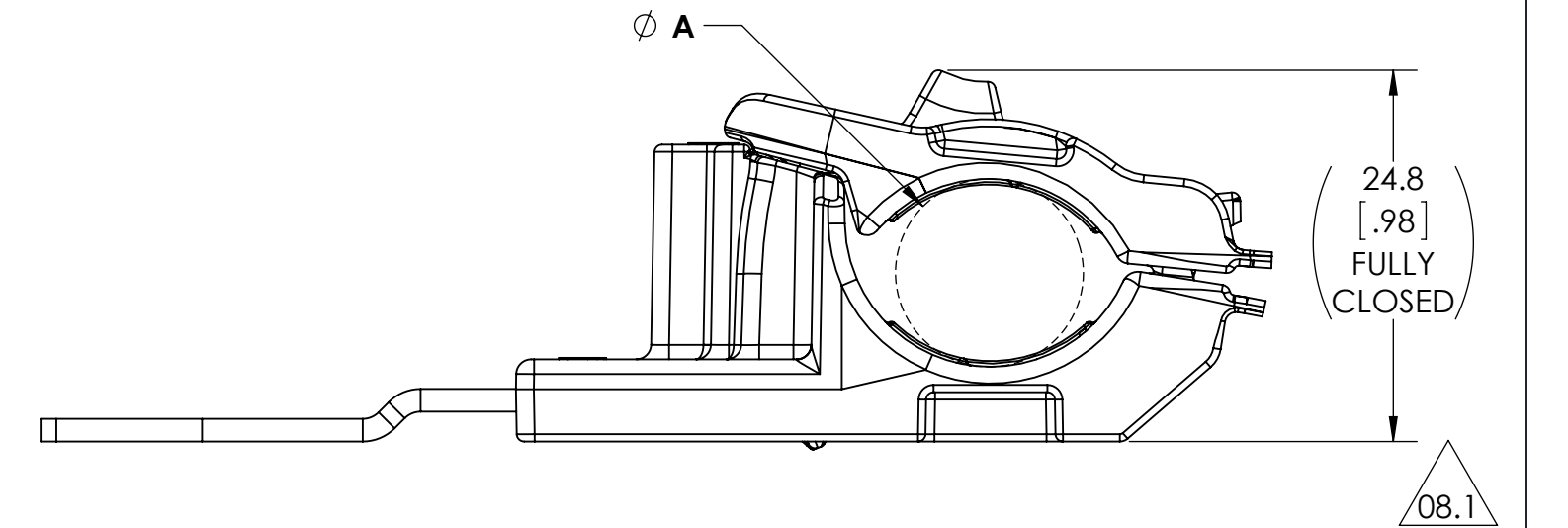
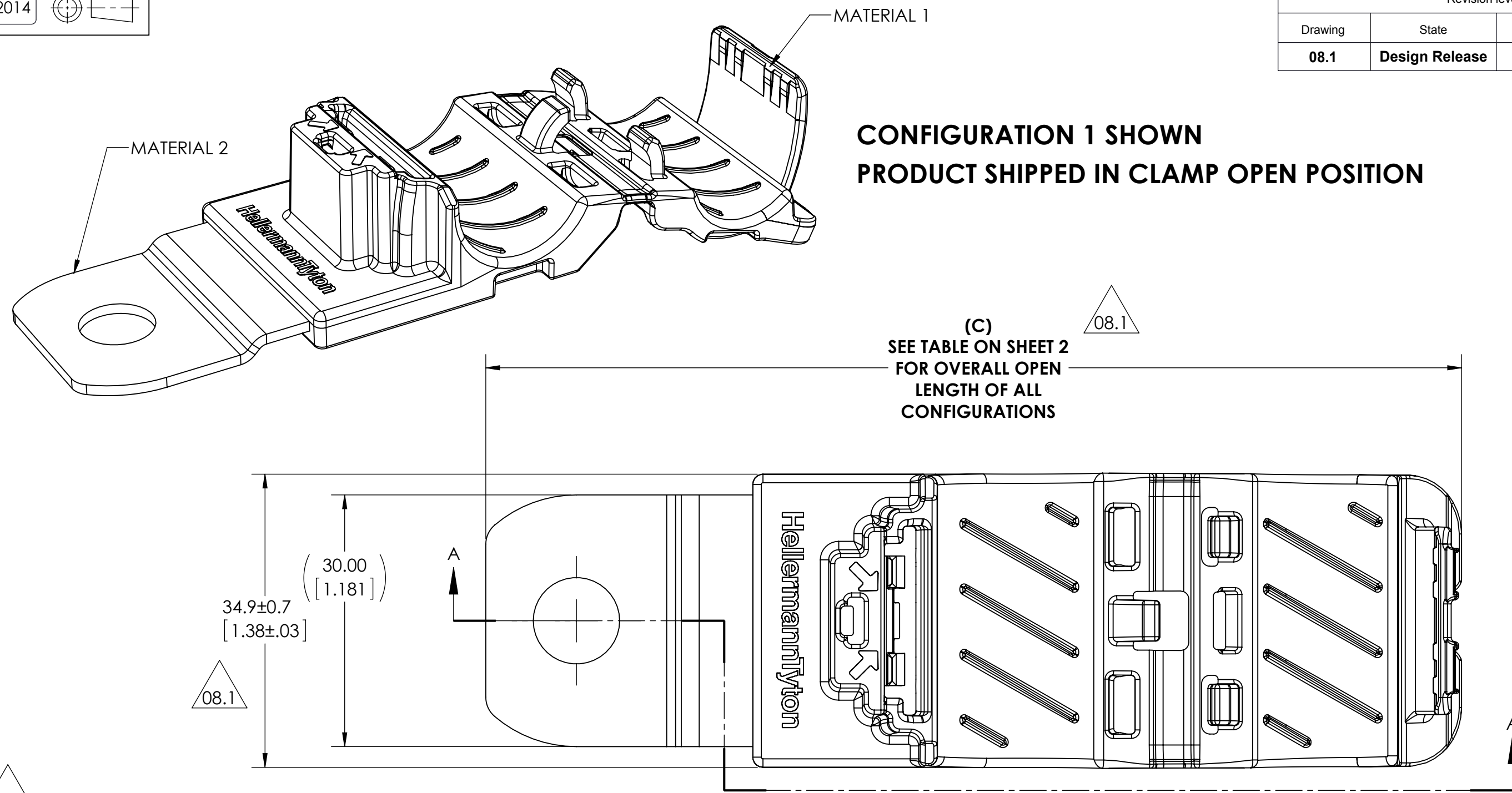
Email & Skype: info@chipsmall.com Web: www.chipsmall.com

Address: A1208, Overseas Decoration Building, #122 Zhenhua RD., Futian, Shenzhen, China

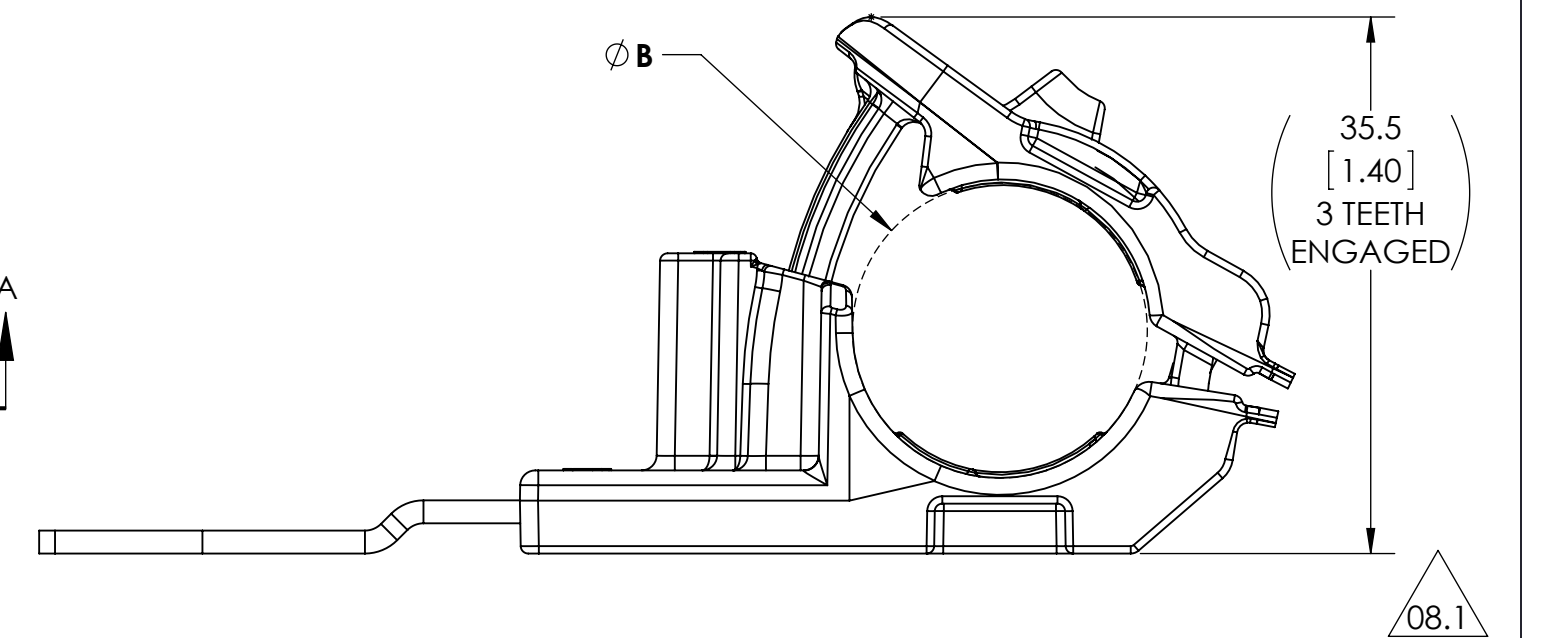




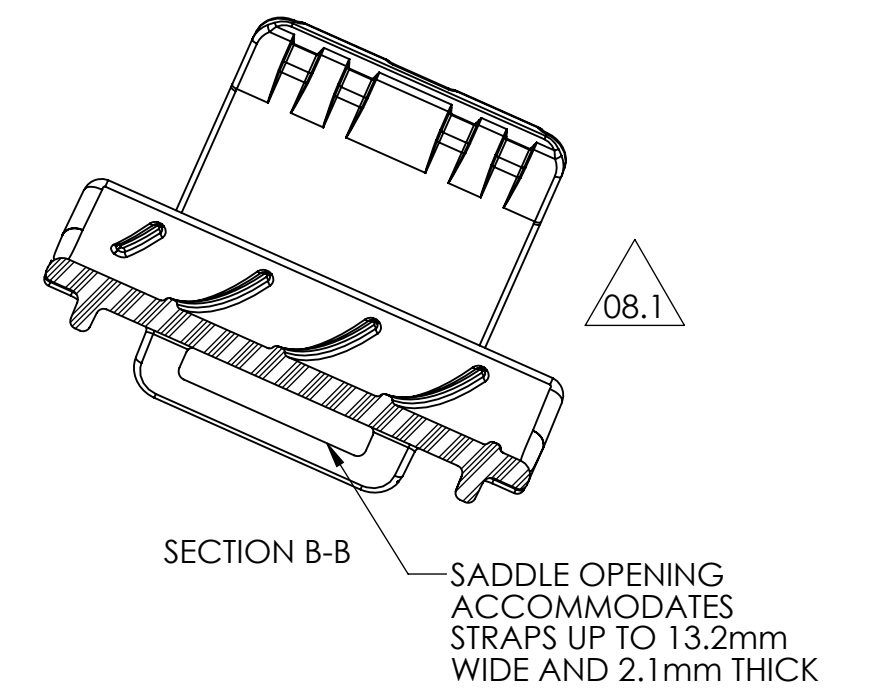
Revision level			Revision Record	Changed	Date	Approved	Date
Drawing	State	Part					
08.1	Design Release	A	SEE ECN# 013325	MHT	3/25/2016	KAC	3/25/2016



MINIMUM BUNDLE DIAMETER



MAXIMUM BUNDLE DIAMETER



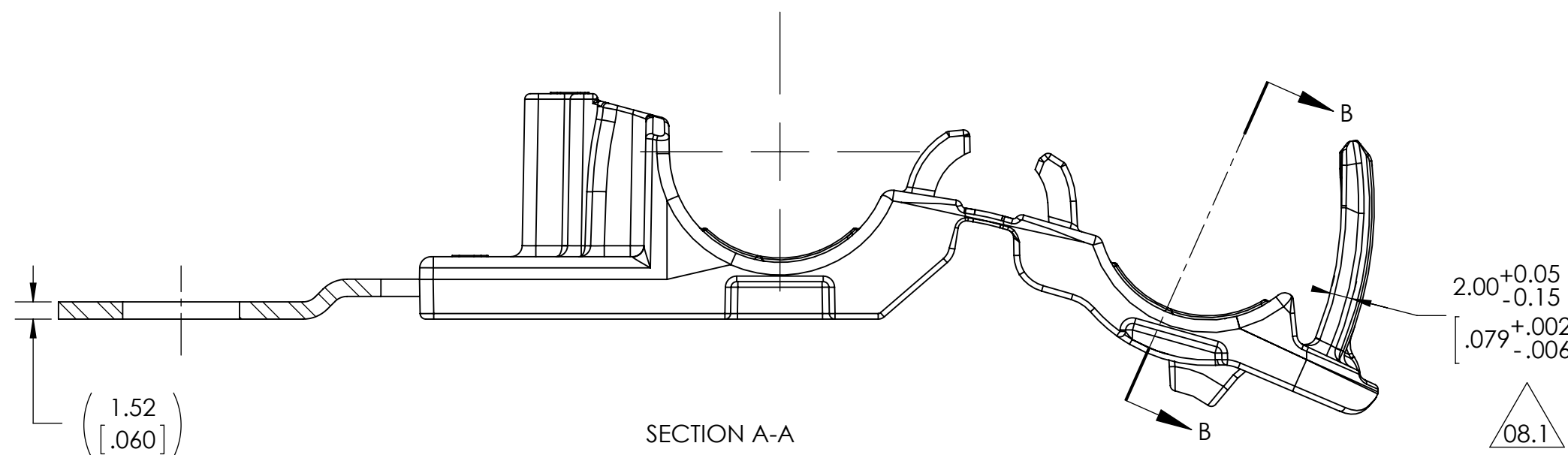
INITIAL MOLD VALIDATION:

1. ITS-0003 RATCHET P CLAMP SOLID MANDREL TEST: EXCEEDED 445 NEWTONS (100 LBS) MIN AT A NOMINAL BUNDLE DIAMETER OF 15.88 [0.625] TESTING ONLY REQUIRED OF CONFIGURATION *RCB180SM10, *RCB180LM10, AND *RCB90LM10 *TESTING CAN BE SUBSTITUTED WITH M6, M8, M12 VERSION MOUNTING HOLES

2. ITS-0008 CLOSE AND RELEASE TEST: EXCEEDED 445 NEWTONS (100 LBS) MIN AT A NOMINAL BUNDLE DIAMETER OF 15.88 [0.625] AFTER CLOSING AND RELEASING 40 TIMES

3. ITS-0014 LOW TEMPERATURE HINGE TEST: NO DAMAGE OCCURED AFTER BENDING LIVING HINGE 40 TIMES AT -40°C

NOTE: TESTING #2 AND #3 CAN BE DONE ON ANY TYPE NUMBER AND WILL APPLY TO ALL OTHER TYPE NUMBERS IN THE TABLE ON SHEET 2



PERFORMANCE REQUIREMENTS:

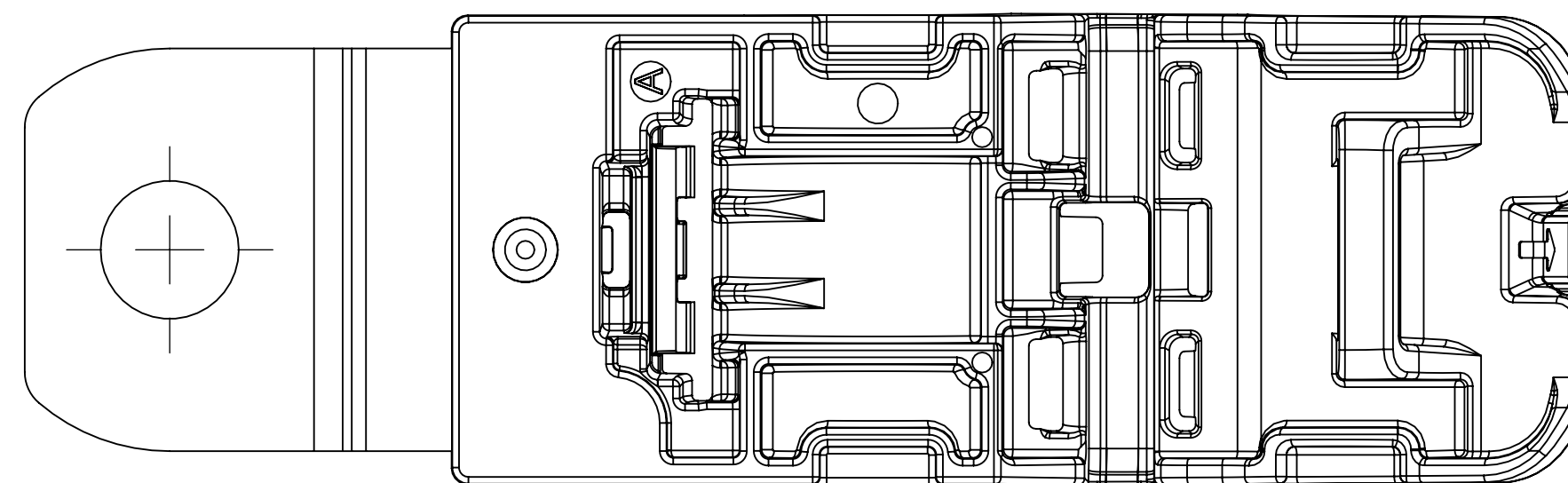
DRY AS MOLDED WITH ≤ 0.5% MOISTURE CONTENT:

4. ITS-0001 RATCHET P CLAMP SPLIT MANDREL TEST: 445 NEWTONS (100 LBS) MIN AT A NOMINAL BUNDLE DIAMETER OF 15.88 [0.625]

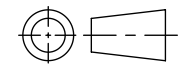
NOTE: TESTING CAN BE DONE ON ANY TYPE NUMBER AND WILL APPLY TO ALL OTHER TYPE NUMBERS IN THE TABLE ON SHEET 2

5. MAXIMUM PERCENT REGRIND PERMISSABLE: 25%

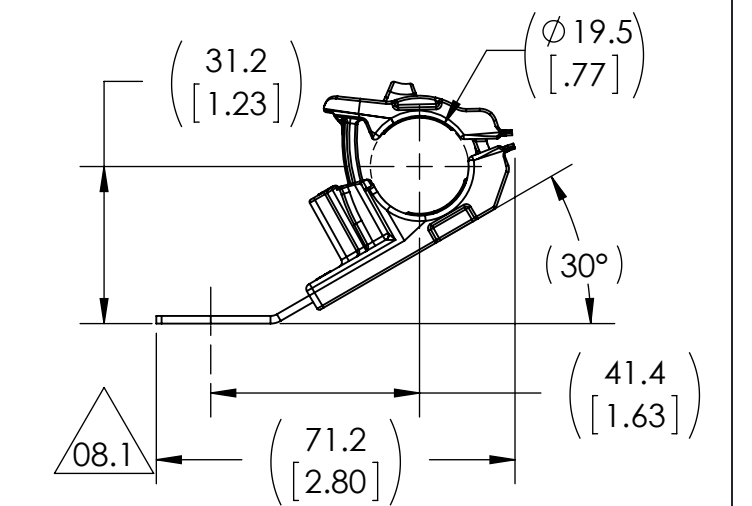
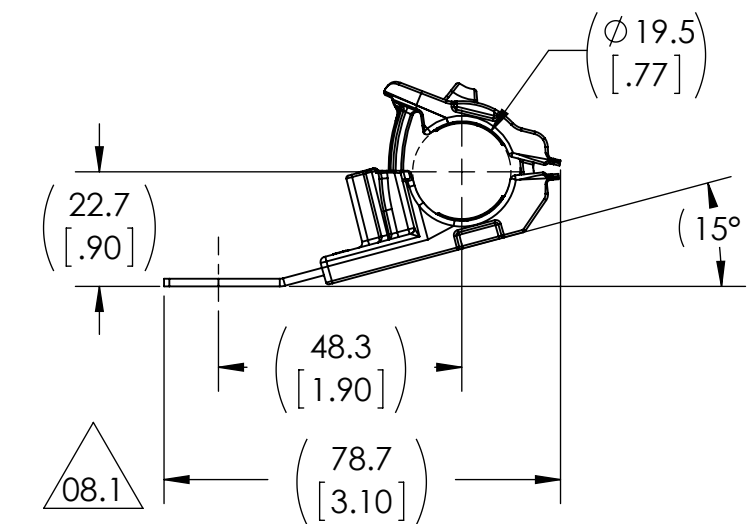
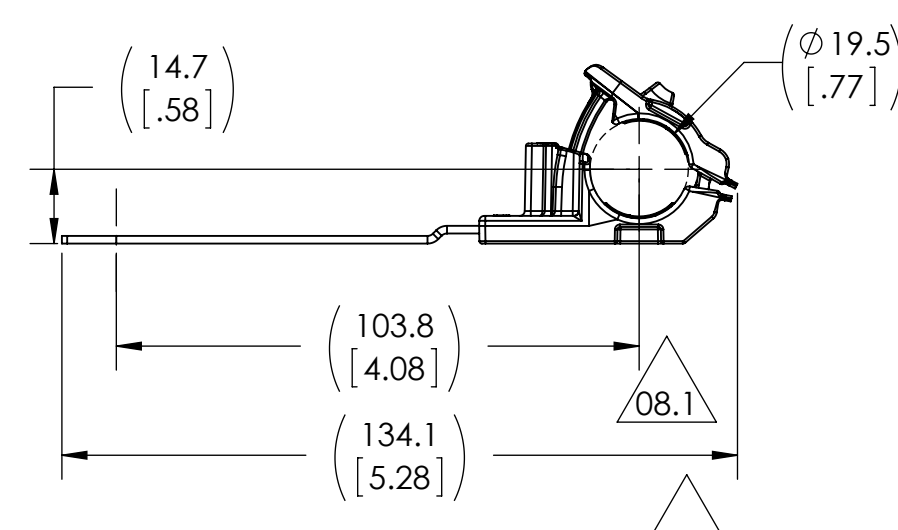
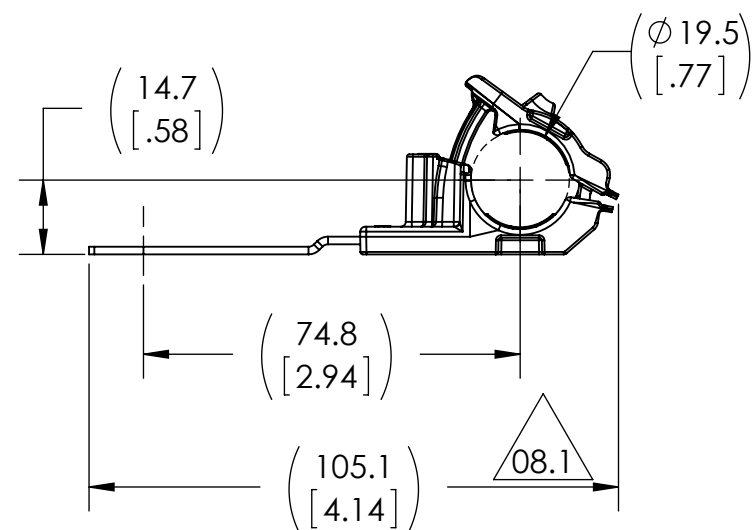
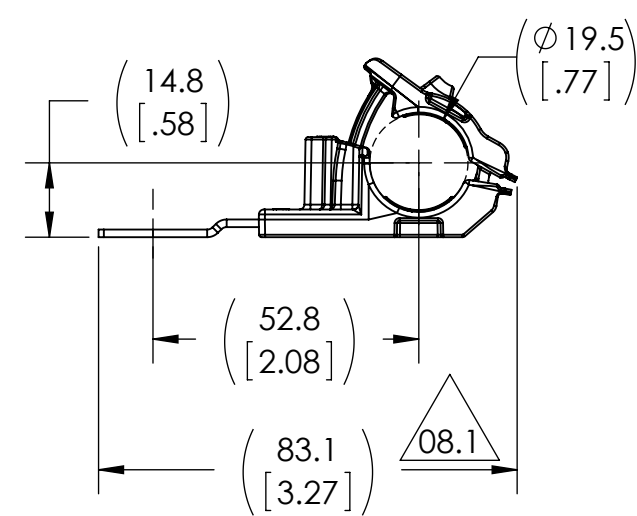
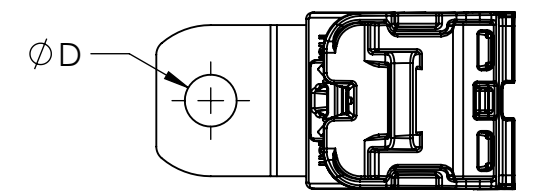
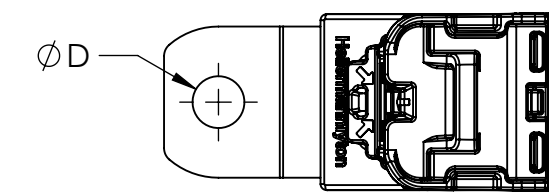
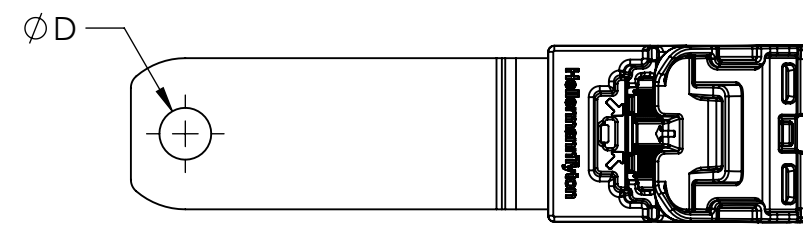
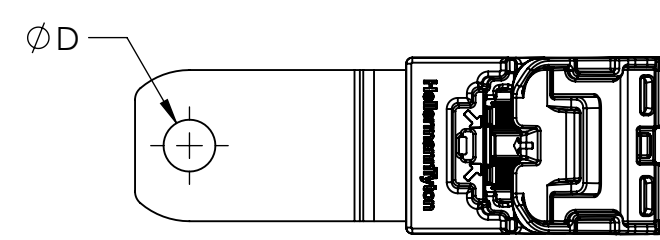
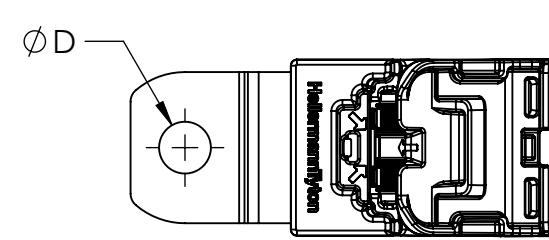
6. MAXIMUM ALLOWABLE FLASH OR MISMATCH TO BE: 0.25mm



Notes	Material	Units: millimeters	Drawn	MHT	04/13/2015	Article/Type-No	SEE CHART (SHEET 2)	Scale	2:1
	1. PA66HIRHSUV	Dimension without tolerances details to:	Approved	KAC	05/28/2015	Title	RCB RATCHET P CLAMP, SIZE B, CLAMP RANGE 12.7 TO 19.5	Project Number	PRP15-0341
	2. ZINC PLATED STEEL	.xxx = ±.013 .xx = ±.13 .x = ±.3 None = ±.8 ∠ = ±0.5*			Drawing-No	15-0341-101-CSU	Production : Phase	Format	C
		Dimension Formatted mm/(in)	The copyright of this drawing is reserved by HellermannTyton. It is issued on condition that it is not reproduced, copied, or disclosed to a third party, either wholly or in part, without the consent of HellermannTyton.		Web: www.hellermann.tyton.com	Sheet	1/2		



Revision level			Revision Record	Changed	Date	Approved	Date
Drawing	State	Part					
08.1	Design Release	A	SEE ECN# 013325	MHT	3/25/2016	KAC	3/25/2016



CONFIGURATION: 1

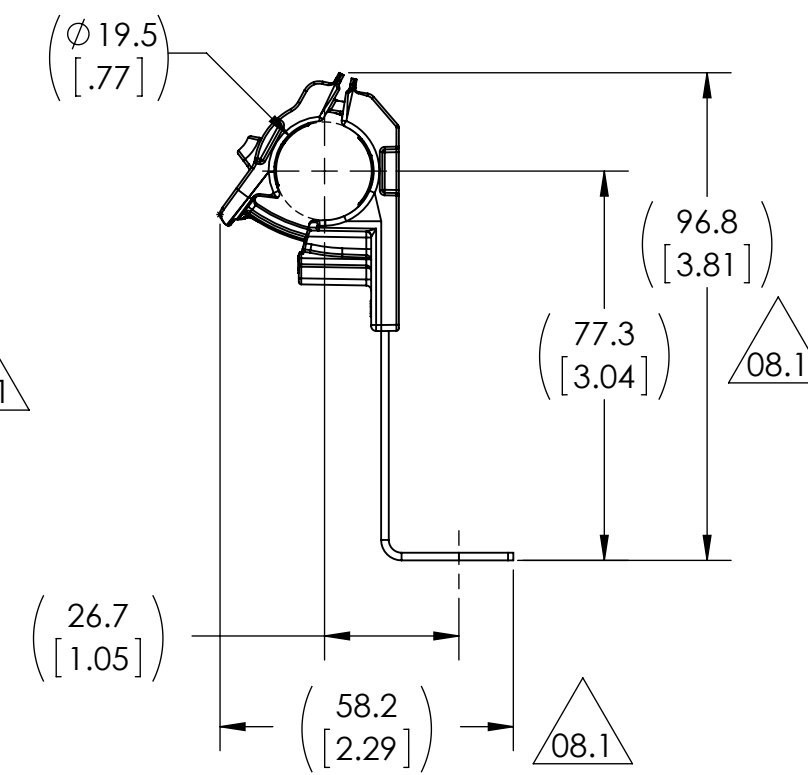
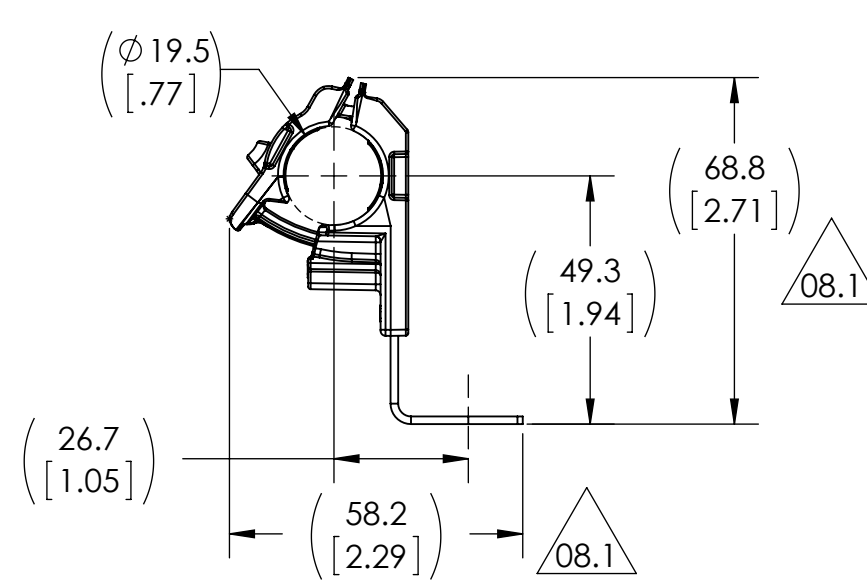
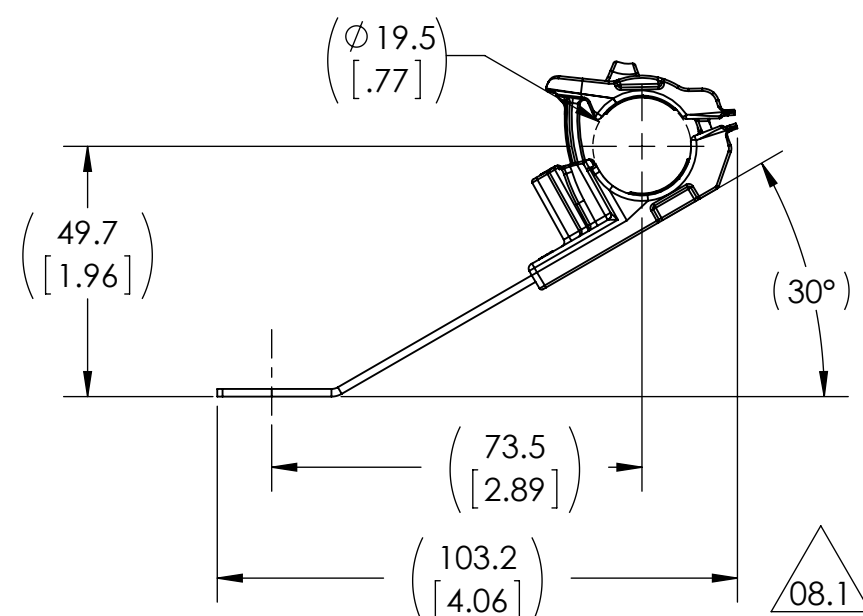
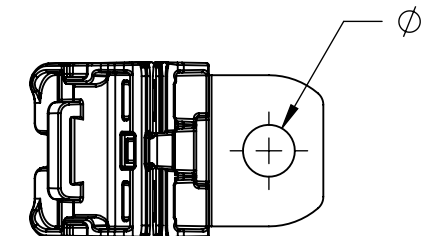
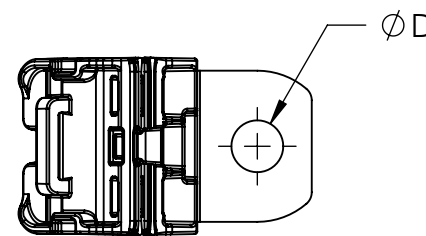
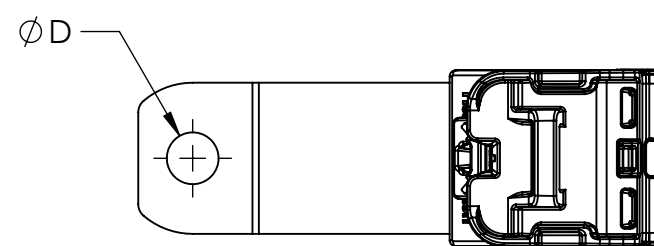
CONFIGURATION: 2

CONFIGURATION: 3

CONFIGURATION: 4

CONFIGURATION: 5

**ALL VIEWS IN MAXIMUM BUNDLE DIAMETER
PRODUCT SHIPPED IN CLAMP OPEN POSITION**



CONFIGURATION: 6

CONFIGURATION: 7

CONFIGURATION: 8

CONFIGURATION	DESCRIPTION	D ±0.13	TYPE	C - OVERALL OPEN LENGTH REFERENCE (SEE SHEET 1)
1	180° SHORT	6.50 [.256]	RCB180SM6	116.2 [4.57]
		8.31 [.327]	RCB180SM8	
		10.29 [.405]	RCB180SM10	
		12.95 [.510]	RCB180SM12	
2	180° MEDIUM	6.50 [.256]	RCB180MM6	138.2 [5.44]
		8.31 [.327]	RCB180MM8	
		10.29 [.405]	RCB180MM10	
3	180° LONG	6.50 [.256]	RCB180LM6	167.2 [6.58]
		8.31 [.327]	RCB180LM8	
		10.29 [.405]	RCB180LM10	
4	15° SHORT	6.50 [.256]	RCB15SM6	115.6 [4.55]
		8.31 [.327]	RCB15SM8	
		10.29 [.405]	RCB15SM10	
		12.95 [.510]	RCB15SM12	
5	30° SHORT	6.50 [.256]	RCB30SM6	113.5 [4.47]
		8.31 [.327]	RCB30SM8	
		10.29 [.405]	RCB30SM10	
6	30° LONG	6.50 [.256]	RCB30LM6	150.5 [5.93]
		8.31 [.327]	RCB30LM8	
		10.29 [.405]	RCB30LM10	
		12.95 [.510]	RCB30LM12	
7	90° SHORT	6.50 [.256]	RCB90SM6	101.9 [4.01]
		8.31 [.327]	RCB90SM8	
		10.29 [.405]	RCB90SM10	
8	90° LONG	6.50 [.256]	RCB90LM6	129.9 [5.11]
		8.31 [.327]	RCB90LM8	
		10.29 [.405]	RCB90LM10	
		12.95 [.510]	RCB90LM12	

Notes	Material	Units: millimeters	The copyright of this drawing is reserved by HellermannTyton. It is issued on condition that it is not reproduced, copied, or disclosed to a third party, either wholly or in part, without the consent of HellermannTyton.	Drawn	MHT	04/13/2015	Article/Type-No	SEE CHART	Scale	2:3	
	1. PA66HIRHSUV 2. ZINC PLATED STEEL	Dimension without tolerances details to: .xxx = ±.013 .xx = ±.13 .x = ±.3 None = ±.8 < = ±0.5* Dimension Formatted mm/(in)		Approved	KAC	05/28/2015	Title	RCB RATCHET P CLAMP, SIZE B, CLAMP RANGE 12.7 TO 19.5	Project Number	PRP15-0341	
				HellermannTyton North America Email: corp@htamericas.com Web: www.hellermann.tyton.com			Drawing-No	15-0341-101-CSU	Production : Phase	Format	C
							Sheet	2/2			