



Chipsmall Limited consists of a professional team with an average of over 10 year of expertise in the distribution of electronic components. Based in Hongkong, we have already established firm and mutual-benefit business relationships with customers from,Europe,America and south Asia,supplying obsolete and hard-to-find components to meet their specific needs.

With the principle of “Quality Parts,Customers Priority,Honest Operation,and Considerate Service”,our business mainly focus on the distribution of electronic components. Line cards we deal with include Microchip,ALPS,ROHM,Xilinx,Pulse,ON,Everlight and Freescale. Main products comprise IC,Modules,Potentiometer,IC Socket,Relay,Connector.Our parts cover such applications as commercial,industrial, and automotives areas.

We are looking forward to setting up business relationship with you and hope to provide you with the best service and solution. Let us make a better world for our industry!



## Contact us

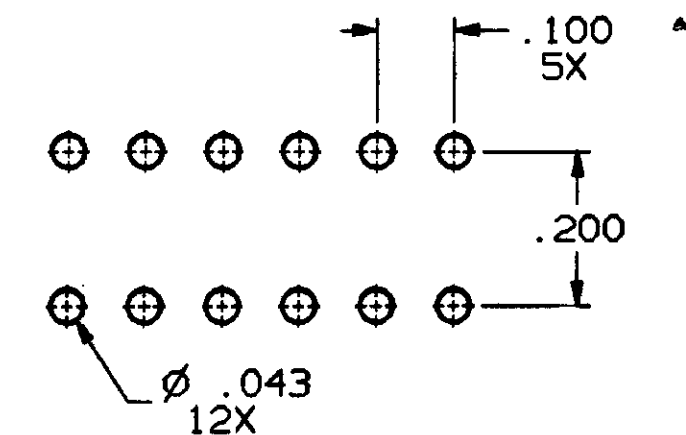
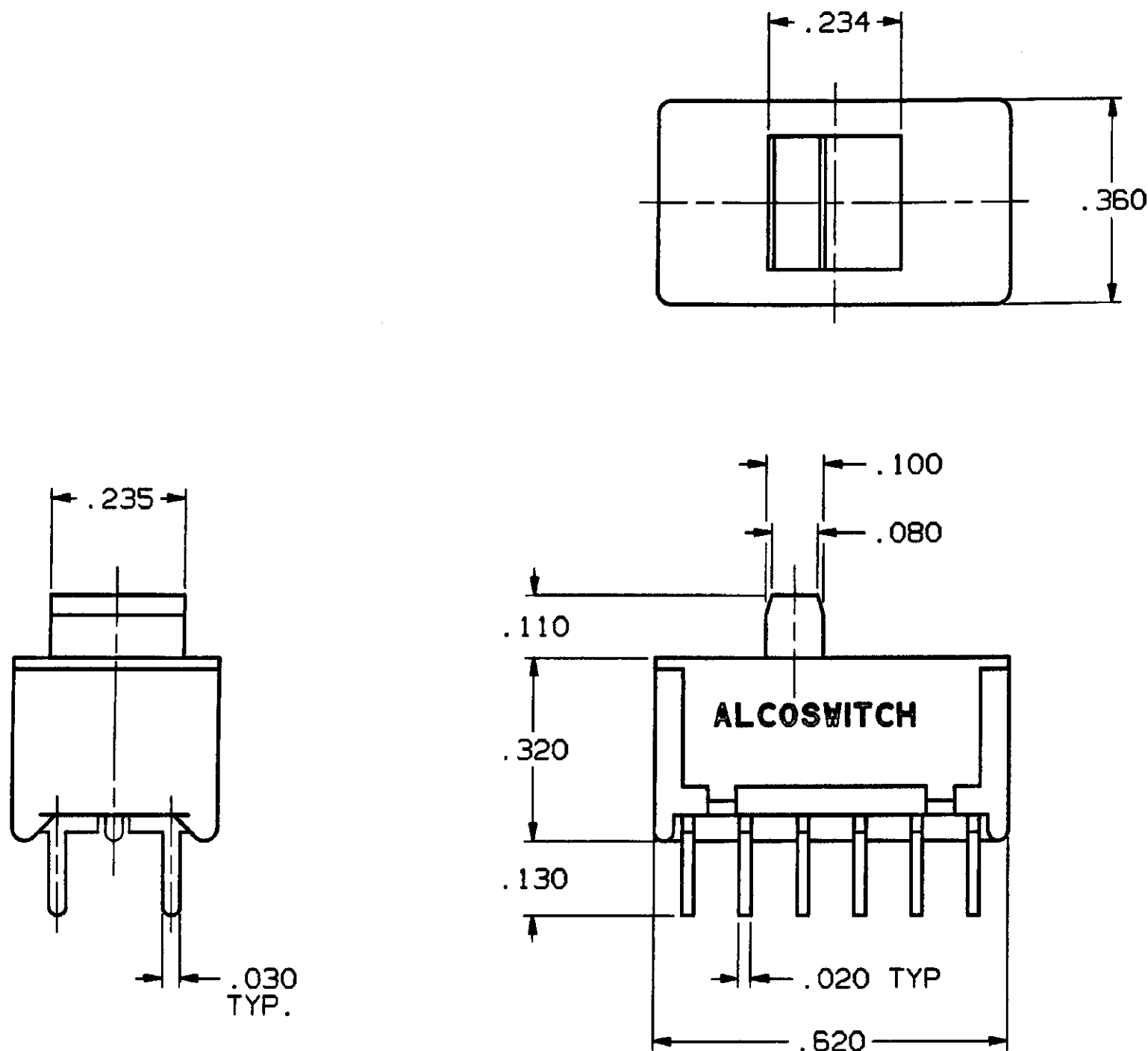
Tel: +86-755-8981 8866 Fax: +86-755-8427 6832

Email & Skype: [info@chipsmall.com](mailto:info@chipsmall.com) Web: [www.chipsmall.com](http://www.chipsmall.com)

Address: A1208, Overseas Decoration Building, #122 Zhenhua RD., Futian, Shenzhen, China



CONVERSION CHART	
INCH	MM
.002	0.05
.010	0.25
.020	0.51
.030	0.76
.043	1.09
.080	2.03
.100	2.54
.110	2.79
.130	3.30
.200	5.08
.234	5.94
.235	5.97
.320	8.13
.360	9.14
.620	15.75



PC LAYOUT  
PC LAYOUT TOLERANCE: ±.002

SPECIFICATIONS:

MATERIALS:  
CASE: HIGH TEMPERATURE POLYESTER, (94V-0)  
FRAME: STEEL  
ACTUATOR: POLYESTER (94V-0)  
MOVABLE CONTACT: GOLD PLATE OVER COPPER ALLOY  
STATIONARY CONTACT: GOLD PLATE OVER COPPER ALLOY  
TERMINALS: TIN LEAD PLATE

ELECTRICAL:  
CONTACT RATING: 0.4VA MAX. @ 20 VDC OR PEAK AC  
CONTACT RESISTANCE: 40 MILLIOHMS MAX.  
INSULATION RESISTANCE: 1,000 MEGOHMS MIN. @ 500 VDC  
DIELECTRIC STRENGTH: 1,000 VOLTS RMS AT SEA LEVEL  
LIFE EXPECTANCY: 60,000-80,000 CYCLES

ENVIRONMENTAL:  
OPERATING TEMPERATURE: -20°C TO +80°C (-4°F TO 176°F)  
STORAGE TEMPERATURE: -20°C TO +80°C (-4°F TO 176°F)

NOTES:

1. INTERPRET DRAWING PER ASME Y14.5M-1994.

TERMINAL DESIGNATION NUMBERS ARE FOR REFERENCE ONLY AND DO NOT APPEAR ON SWITCHES.

1 2 3 7 8 9

4 5 6 10 11 12

TERMINALS CONNECTED WHEN SLIDE IS IN POSITIONS SHOWN.

AUGAT D/N 40151-SD

REV	A
REVISIONS	063C-0173-02

THIS IS A C.A.D. GENERATED DRAWING.  
DO NOT MAKE MANUAL REVISIONS TO MASTER.

THIRD ANGLE PROJECTION

TOLERANCES (EXCEPT AS NOTED)

ANGULAR = ±1°

DECIMAL .XX = ±

DECIMAL .XXX = ±.010

DECIMAL .XXXX = ±

TYCO CONFIDENTIAL

This document contains information which is the exclusive property of TYCO ELECTRONICS. Distribution, reproduction or use by others is not permitted without the expressed written consent of Augat Inc.

CUSTOMER DRAWING

SPECIFICATIONS ARE SUBJECT TO CHANGES WITHOUT NOTICE

UNLESS OTHERWISE SPECIFIED DIMENSIONS ARE IN INCHES DO NOT SCALE PRINT

FILE NAME: 40151OUT

DIRECTORY: SLDSWCH

MATERIAL: SEE SPECIFICATIONS

FINISH: SEE SPECIFICATIONS

ORIGINAL DATE OF DRAWING: 8-10-83

DRAWN: V.J.M.

CHECKED: B.B.

APPROVED: A.K.

CODE IDENT. NO. 91506

NEXT ASSY:

DATE: 8-10-83

DATE: 8-18-83

DATE: 8-19-83

DWG. SIZE C

tyco Electronics

TITLE: CUSTOMER DRAWING SLIDE SWITCH (4 POLE) (TSS41NG-PC)

DWG. NO. 2-1437579-5

PRODUCT CODE: CSI

SCALE: SHEET 1 OF 1