



Chipsmall Limited consists of a professional team with an average of over 10 year of expertise in the distribution of electronic components. Based in Hongkong, we have already established firm and mutual-benefit business relationships with customers from,Europe,America and south Asia,supplying obsolete and hard-to-find components to meet their specific needs.

With the principle of “Quality Parts,Customers Priority,Honest Operation,and Considerate Service”,our business mainly focus on the distribution of electronic components. Line cards we deal with include Microchip,ALPS,ROHM,Xilinx,Pulse,ON,Everlight and Freescale. Main products comprise IC,Modules,Potentiometer,IC Socket,Relay,Connector.Our parts cover such applications as commercial,industrial, and automotives areas.

We are looking forward to setting up business relationship with you and hope to provide you with the best service and solution. Let us make a better world for our industry!



Contact us

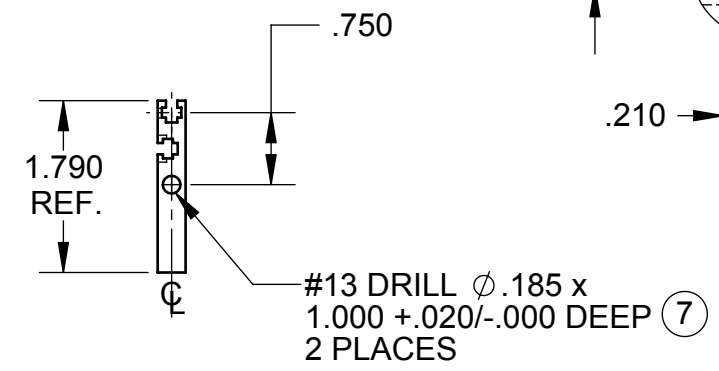
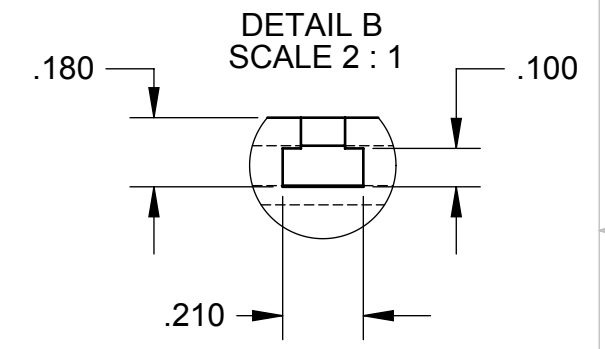
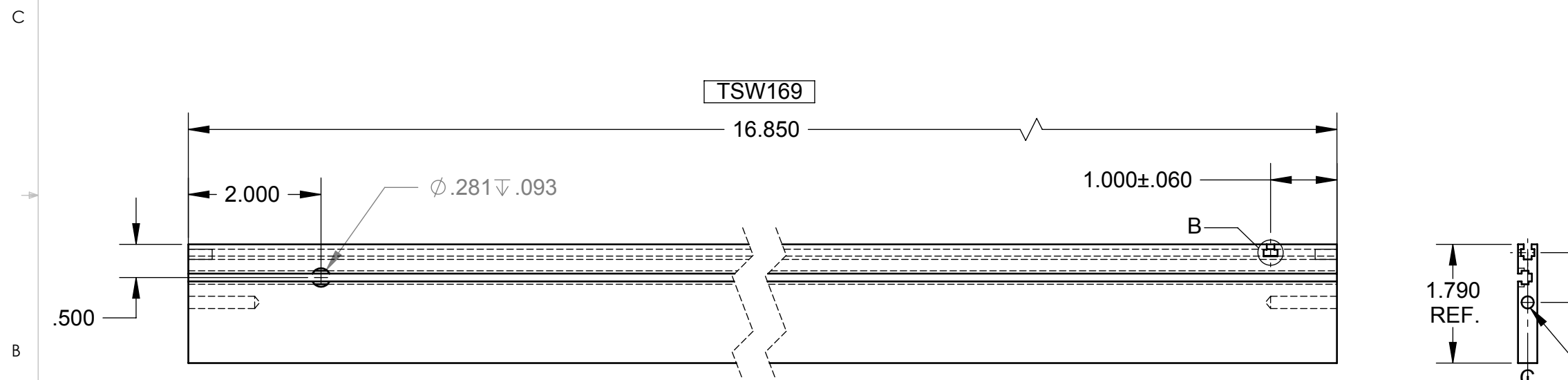
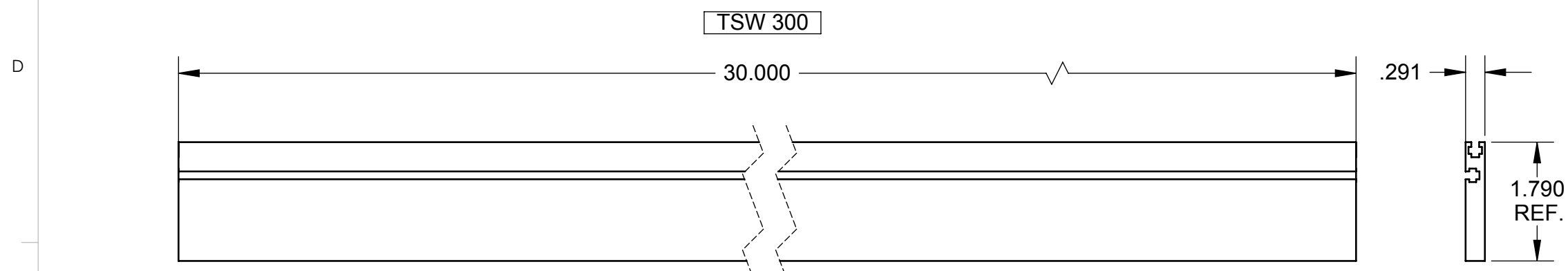
Tel: +86-755-8981 8866 Fax: +86-755-8427 6832

Email & Skype: info@chipsmall.com Web: www.chipsmall.com

Address: A1208, Overseas Decoration Building, #122 Zhenhua RD., Futian, Shenzhen, China



REVISIONS				
ZONE	REV.	DESCRIPTION	DATE	APPROVED
ALL	C	ADDED DET. NO. 4 ECO 1481 ADDED P/N TSW169-4	06/05/74	
	C1	ADDED CAT NO. TSW-81N-4	09/22/74	
	C2	DIM .875 WAS .825		
	D	REV'D Ø.281 HOLE POS. ECO 1682		
	D1	ADDED Z4424-30-4 & -5 TO TABLE		
	E	ECO 1926	01/07/80	
	E1	P/N M4424-30-1 WAS DETAIL 3 & INSERT WAS NONE (ERROR)	12/08/81	
	E2	DELETED P/N M4424-30-1	12/15/81	
	F	INC ECO 3924		
	F1	DETAIL 4 HOLE SIZE WAS Ø.1875 +.003/-.000 x .312 +.020/-.000 DEEP		
	F2	INC ECO 3949		
	F3	ADDED NOTE 10		
	F4	REMOVED NO LONGER USED P/N#	02/10/09	



(7) DRILL .187 ^{+0.003}/_{-.000} DIA., .312 ^{+0.020}/_{-.000} DEEP, TSW169-4 ONLY

- (6) USE SQUARE ENDED CLOSE FITTING GAUGE PIN TO CHECK DEPTH OF HOLE
- 5. PARTS TO BE DEGREASED AFTER FABRICATION
- (4) PARTS TO BE FREE OF BURRS & SURFACE SCRATCHES REMOVE ALL BURRS FROM EXTRUDED T-SLOTS
- 3. PART TO BE STRAIGHT WITHIN .015/10 INCHES IN LENGTH
- 2. CUT ENDS TO BE SQUARE WITHIN .0025/INCH IN WIDTH
- 1. MAT'L: AL. EXTRUSION, 6063-T6

NOTES: UNLESS OTHERWISE SPECIFIED.

PROPRIETARY AND CONFIDENTIAL
THE INFORMATION CONTAINED IN THIS DRAWING IS THE SOLE PROPERTY OF VECTOR ELECTRONICS & TECH., INC. ANY REPRODUCTION IN PART OR AS A WHOLE WITHOUT THE WRITTEN PERMISSION OF VECTOR ELECTRONICS & TECH., INC. IS PROHIBITED.

UNLESS OTHERWISE SPECIFIED:	NAME	DATE
DIMENSIONS ARE IN INCHES	DRAWN	TRUSHAR
TOLERANCES:	CHECKED	
FRACTIONAL ±	ENG APPR.	
ANGULAR: ± X°	MFG APPR.	
TWO PLACE DECIMAL ±.03	Q.A.	
THREE PLACE DECIMAL ±.005		
INTERPRET GEOMETRIC TOLERANCING PER:		
MATERIAL 1	THIRD ANGLE PROJECTION	
FINISH		
DO NOT SCALE DRAWING		

VECTOR 11115 VANOWEN ST., NORTH HOLLYWOOD, CA 91605

T-STRUT DETAIL TSW-SER.

SIZE	DWG. NO.	REV
B	M4424D5.30	F4
SCALE: 1:2	WEIGHT:	SHEET 1 OF 1