



Chipsmall Limited consists of a professional team with an average of over 10 year of expertise in the distribution of electronic components. Based in Hongkong, we have already established firm and mutual-benefit business relationships with customers from,Europe,America and south Asia,supplying obsolete and hard-to-find components to meet their specific needs.

With the principle of “Quality Parts,Customers Priority,Honest Operation,and Considerate Service”,our business mainly focus on the distribution of electronic components. Line cards we deal with include Microchip,ALPS,ROHM,Xilinx,Pulse,ON,Everlight and Freescale. Main products comprise IC,Modules,Potentiometer,IC Socket,Relay,Connector.Our parts cover such applications as commercial,industrial, and automotives areas.

We are looking forward to setting up business relationship with you and hope to provide you with the best service and solution. Let us make a better world for our industry!



## Contact us

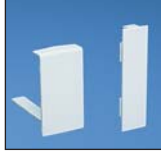
Tel: +86-755-8981 8866 Fax: +86-755-8427 6832

Email & Skype: info@chipsmall.com Web: www.chipsmall.com

Address: A1208, Overseas Decoration Building, #122 Zhenhua RD., Futian, Shenzhen, China



## PAN-WAY® Type T130 Raceway Fittings



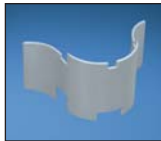
**TCFC130**  
**TCFB3070**



**TRA130**

| Part Number         | Part Description   | Color†    | Std. Pkg. Qty. | Std. Ctn. Qty. |
|---------------------|--|-----------|----------------|----------------|
| <b>TCFC130IW-X</b>  | Cover Coupler Fitting. Used to join sections of T130 Cover together.   | Off White | 10             | 100            |
| <b>TCFB3070IW-X</b> | Base Coupler Fitting. Used to join sections of Type T130 Base together.  | Off White | 10             | 100            |
| <b>TRA130IW</b>     | Right Angle Fitting. Used to join sections of T130 Raceway at right angles.  | Off White | 1              | 10             |
| <b>TRA130IR</b>     | T130 Bend Radius Insert. Works with T130 Right Angle and Tee Fittings.   | Gray      | 1              | 10             |
| <b>TIC130IW</b>     | Inside Corner Fitting. Used to join sections of T130 Raceway at inside corners.  | Off White | 1              | 10             |
| <b>TOCB130IW</b>    | Outside Corner Base Fitting. Used to join sections of T130 Raceway at outside corners.                                     | Off White | 1              | 10             |
| <b>TOCC130IW</b>    | Outside Corner Cover Fitting. Used to cover T130 Outside Corner Base.  | Off White | 1              | 10             |
| <b>TT130IW</b>      | Tee Fitting. Used to join sections of T130 Raceway at tee intersections.   | Off White | 1              | 10             |
| <b>T130TD</b>       | Divided Tee Insert. To be used with T130 Tee Fitting.  | Gray      | 1              | 10             |
| <b>TEC130IW</b>     | End Cap Fitting. Conduit breakouts of 1/2" and 3/4".   | Off White | 1              | 10             |
| <b>TEE130IW</b>     | Entrance End Fitting. Conduit breakouts of 1/2", 3/4", 1", 1 1/2" and 2". Fitting accommodates entry from ceiling or wall. | Off White | 1              | 10             |

† For other colors replace IW (Off White) with EI (Electric Ivory) or IG (International Gray).



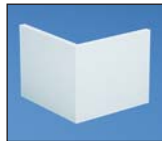
**TRA130IR**



**TIC130**



**TOCB130**



**TOCC130**



**TT130**



**T130TD**



**TEC130**



**TEE130**