



Chipsmall Limited consists of a professional team with an average of over 10 year of expertise in the distribution of electronic components. Based in Hongkong, we have already established firm and mutual-benefit business relationships with customers from,Europe,America and south Asia,supplying obsolete and hard-to-find components to meet their specific needs.

With the principle of “Quality Parts,Customers Priority,Honest Operation,and Considerate Service”,our business mainly focus on the distribution of electronic components. Line cards we deal with include Microchip,ALPS,ROHM,Xilinx,Pulse,ON,Everlight and Freescale. Main products comprise IC,Modules,Potentiometer,IC Socket,Relay,Connector.Our parts cover such applications as commercial,industrial, and automotives areas.

We are looking forward to setting up business relationship with you and hope to provide you with the best service and solution. Let us make a better world for our industry!



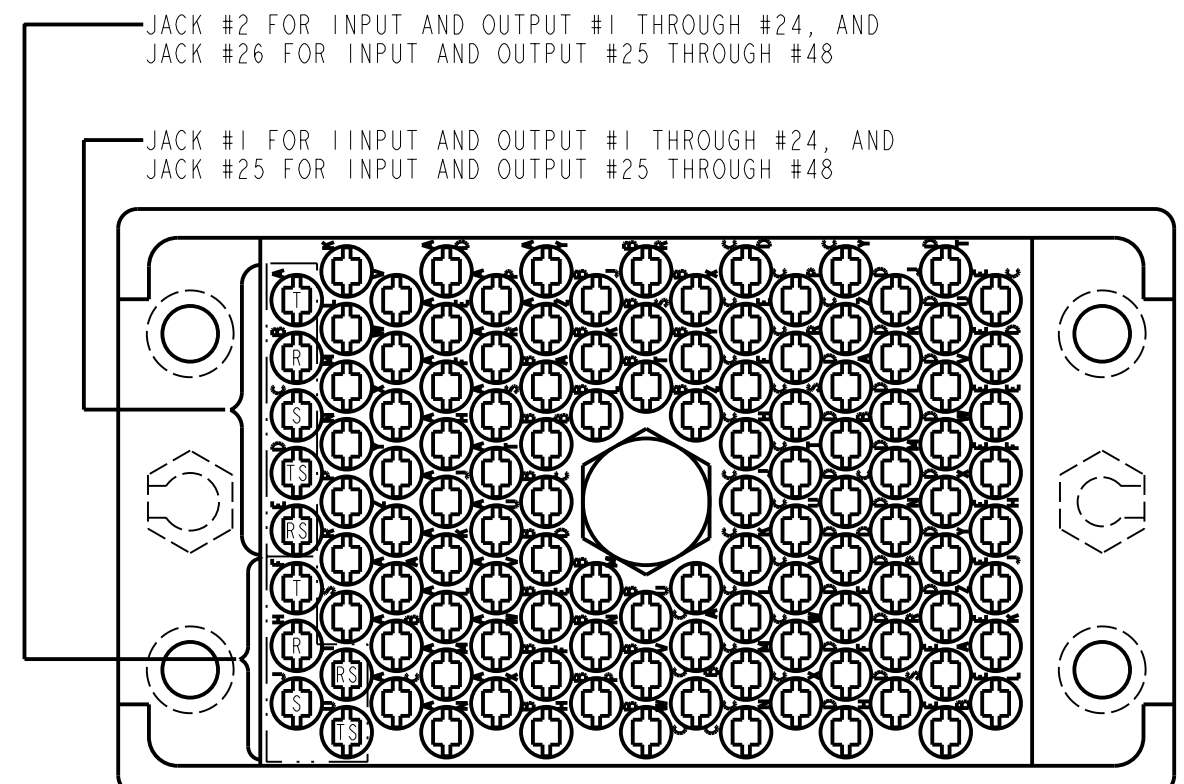
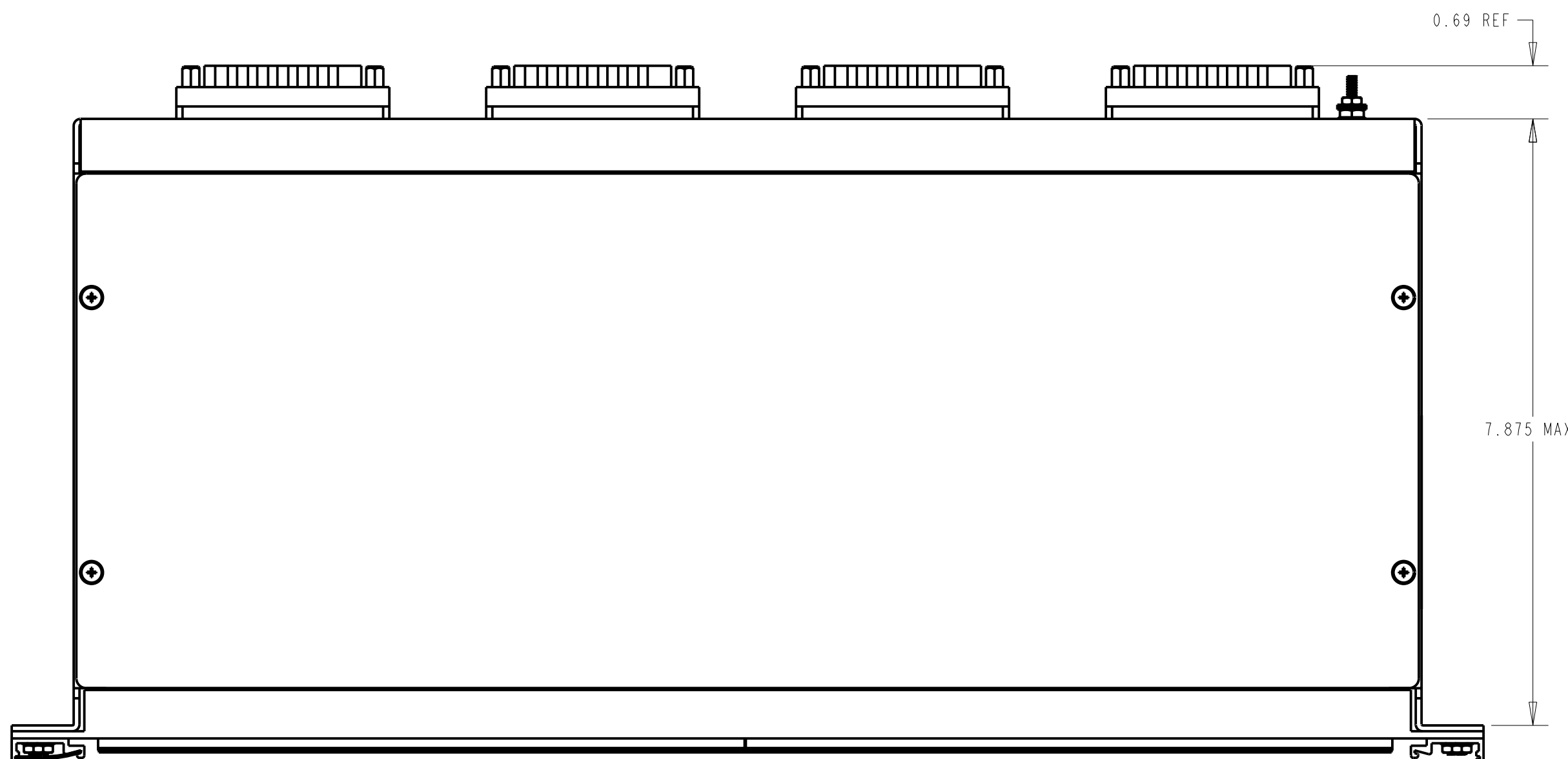
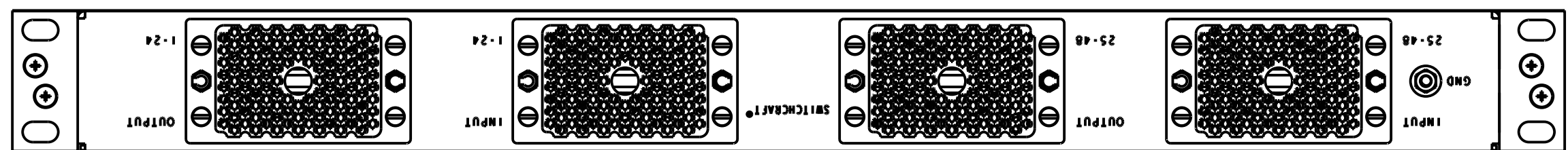
Contact us

Tel: +86-755-8981 8866 Fax: +86-755-8427 6832

Email & Skype: info@chipsmall.com Web: www.chipsmall.com

Address: A1208, Overseas Decoration Building, #122 Zhenhua RD., Futian, Shenzhen, China

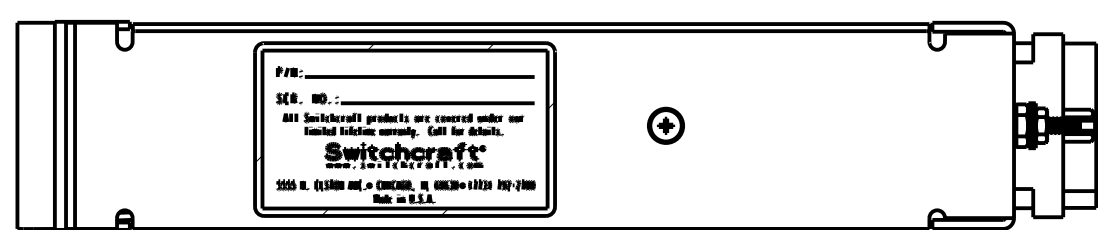
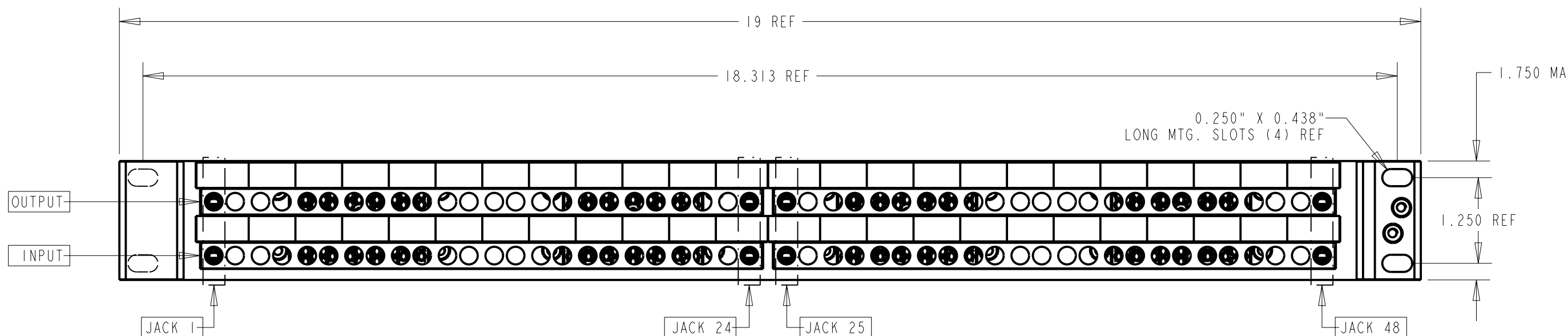




WIRING CONFIGURATION
WIRING VIEW
(NORMALS BROUGHT OUT)



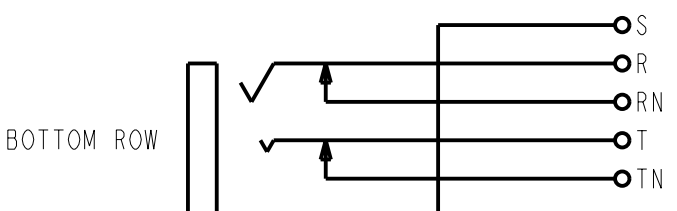
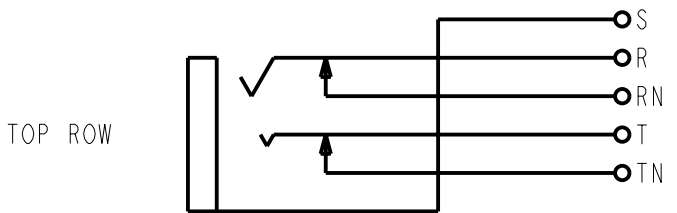
120 PIN CONNECTOR PIN-OUT					
JACK No.	TIP	RING	SLEEVE	TIP SHUNT	RING SHUNT
1	A	B	C	D	E
JACKS #2 THRU #6 PATTERN CONTINUES TO AN, AM, AL, AK, AJ					
7	AH	AF	AE	AD	AP
JACKS #8 THRU #12 PATTERN CONTINUES TO BN, BP, BW, BV, BU					
13	BT	BS	BR	BX	BY
JACKS #14 THRU #18 PATTERN CONTINUES TO CX, DH, DF, DE, DD					
19	DC	DB	DA	CZ	CY
JACKS #20 THRU #24 PATTERN CONTINUES TO EF, EH, EJ, EK, EL					



MATERIAL:
JACKS
 Frame: Nickel-plated steel
 Bushing: Nickel-plated Brass
 Tip, Ring and Shunt Springs: Nickel-silver with welded contacts
 Assembly Screws: Zinc plated steel
 Welded Contacts: Gold alloy

PANEL
 Front Channel: Black anodized aluminum
 Frame & Cover: C.R.S. black epoxy painted
 Designation Strips: Black Polycarbonate, 94V-0
 Designation Strip Covers: Clear Polycarbonate
 Jack Inserts: Polyester

EDAC CONNECTOR
 Housing: Thermoplastic, UL94V-0 (part no's: 516-120-000-202)
 Contacts: Gold plated Phosphor Bronze



JACK SCHEMATIC

NOTE:
 WIRING STARTS AT "A" ON CONNECTOR AND WINDS UP AND DOWN CONTINUOUSLY THROUGHOUT CONNECTOR.

REV	ECO NUMBER	DATE	BY	APVD
E	23184	5-10-00	JL	EB
D	22558	1-21-99	JL	JF
C	22477	8-5-98	SG	ELB
B	22108	1-21-98	RC	JF
A	REL. TO PROD. ECO #21942	8-22-97	SG	SC

★ STAR SYMBOL DENOTES CRITICAL DIMENSION
 UNLESS OTHERWISE SPECIFIED
 1. ALL DIMENSIONS IN INCHES
 - TWO PLACE DECIMALS ±0.01
 - THREE PLACE DECIMALS ±0.005
 - ANGLES ±1°
 - ALL DIA. CONCENTRIC WITHIN 0.005 T.I.R.
 2. FEATURES ON THE SAME CENTERLINE MUST BE ALIGNED WITHIN ±0.002
 3. REMOVE ALL BURRS

THIS DRAWING DESCRIBES A DESIGN CONSIDERED PROPRIETARY IN NATURE, DEVELOPED AND MANUFACTURED BY SWITCHCRAFT INC. AND IS RELEASED ON A CONFIDENTIAL BASIS FOR IDENTIFICATION PURPOSES ONLY.				
SIZE	WIDTH	MULT	LBS/M	TEMPER
FINISH		MATERIAL SPEC No.		
FIRST USED ON		SCALE 5:8		
DATE DRAWN	BY	CHKD	APVD	Switchcraft
5-23-97	SG	5-23-97	JF	
NAME		PART No.		REV
JACKFIELD		TT96EDACNO		E

CUSTOMER DRAWING