



Chipsmall Limited consists of a professional team with an average of over 10 year of expertise in the distribution of electronic components. Based in Hongkong, we have already established firm and mutual-benefit business relationships with customers from,Europe,America and south Asia,supplying obsolete and hard-to-find components to meet their specific needs.

With the principle of "Quality Parts,Customers Priority,Honest Operation,and Considerate Service",our business mainly focus on the distribution of electronic components. Line cards we deal with include Microchip,ALPS,ROHM,Xilinx,Pulse,ON,Everlight and Freescale. Main products comprise IC,Modules,Potentiometer,IC Socket,Relay,Connector.Our parts cover such applications as commercial,industrial, and automotives areas.

We are looking forward to setting up business relationship with you and hope to provide you with the best service and solution. Let us make a better world for our industry!



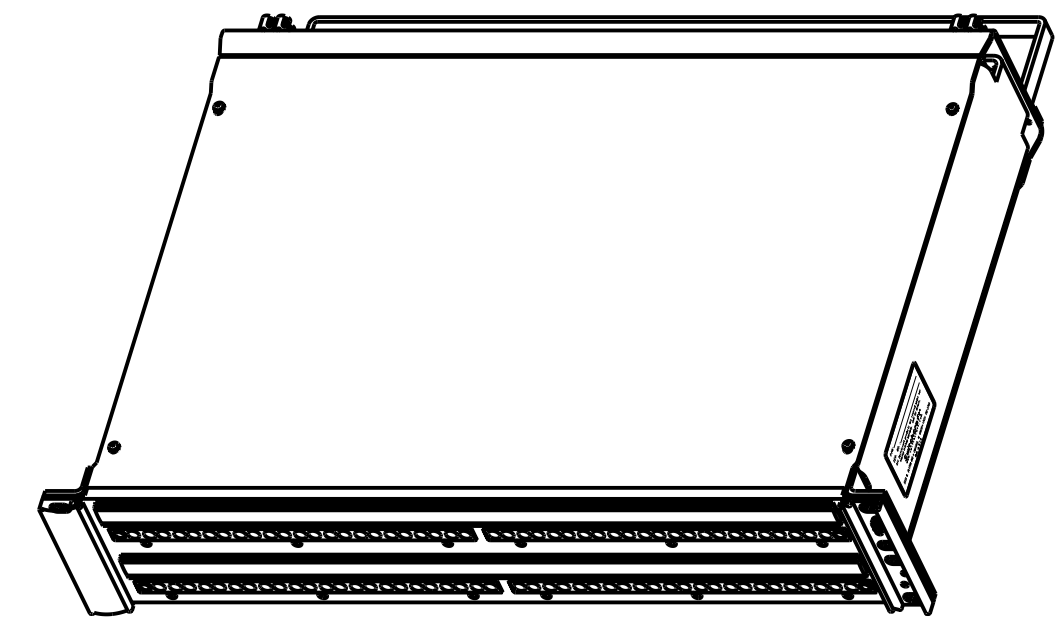
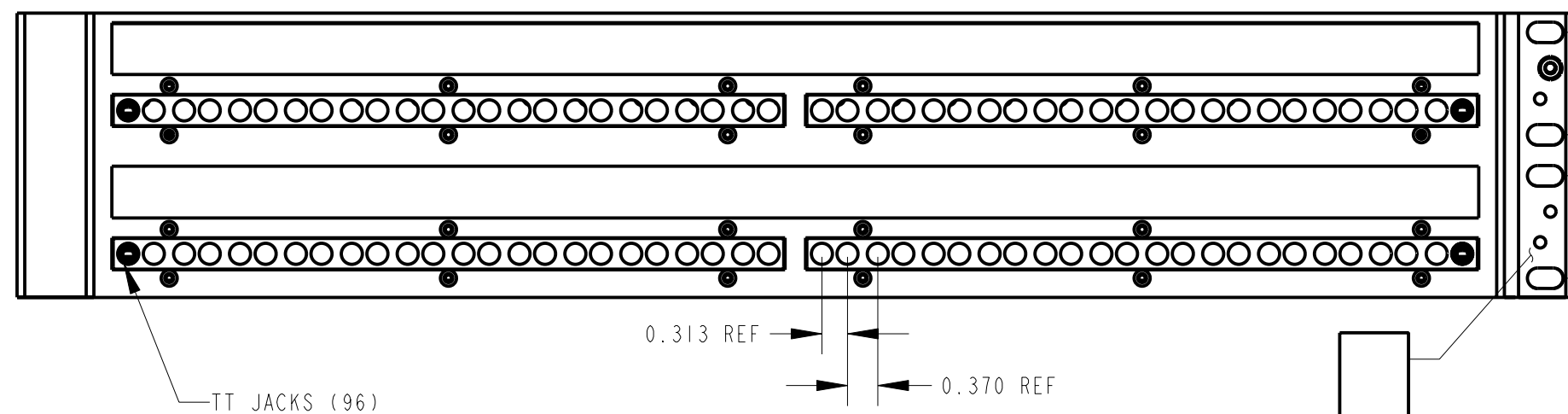
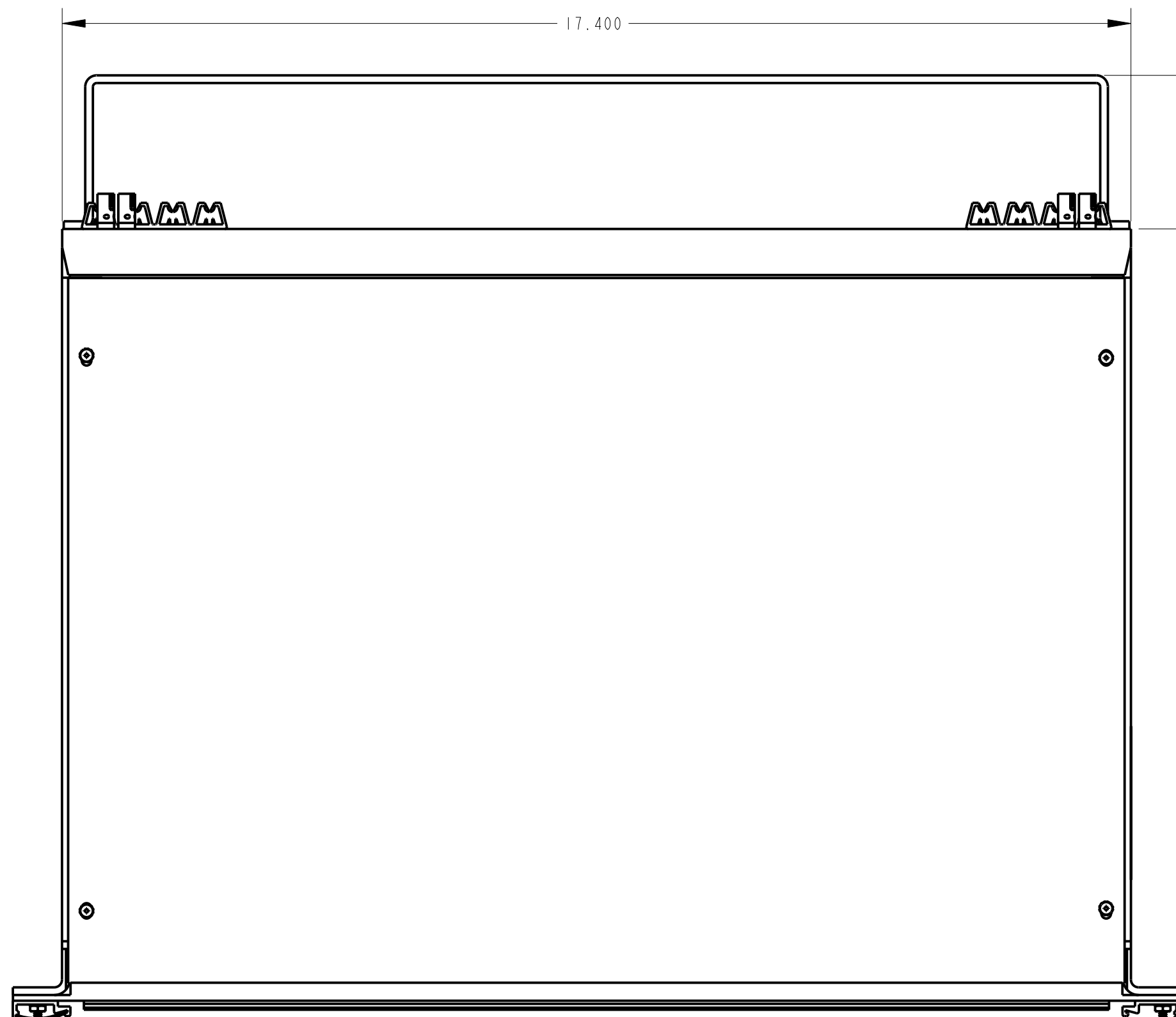
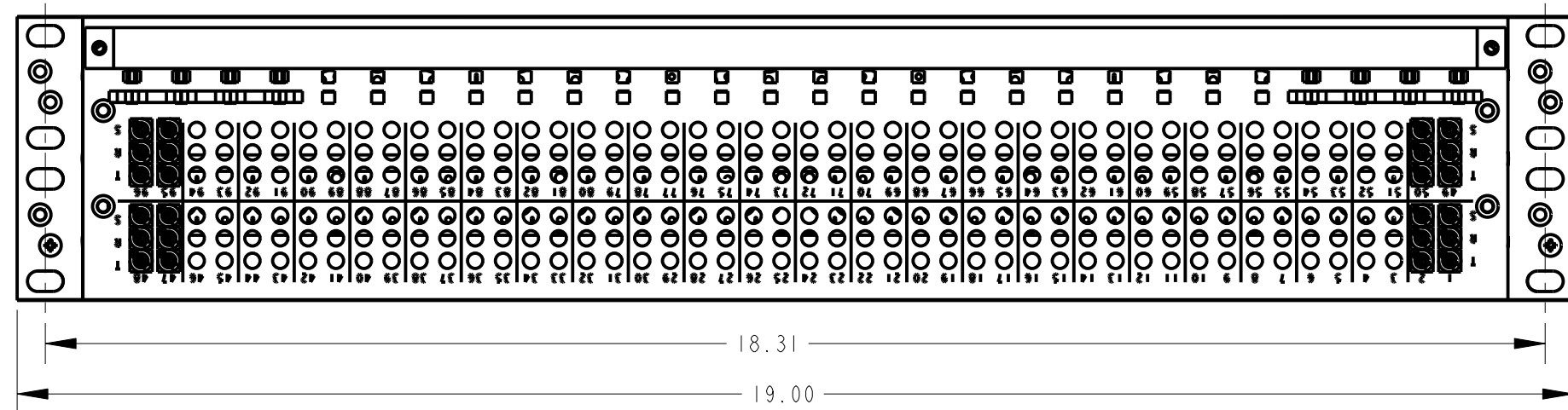
Contact us

Tel: +86-755-8981 8866 Fax: +86-755-8427 6832

Email & Skype: info@chipsmall.com Web: www.chipsmall.com

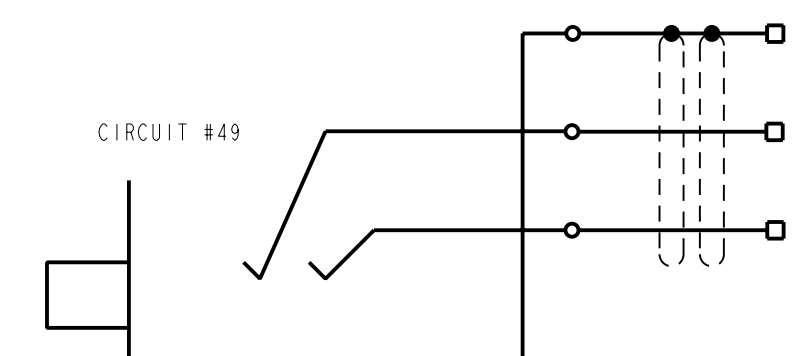
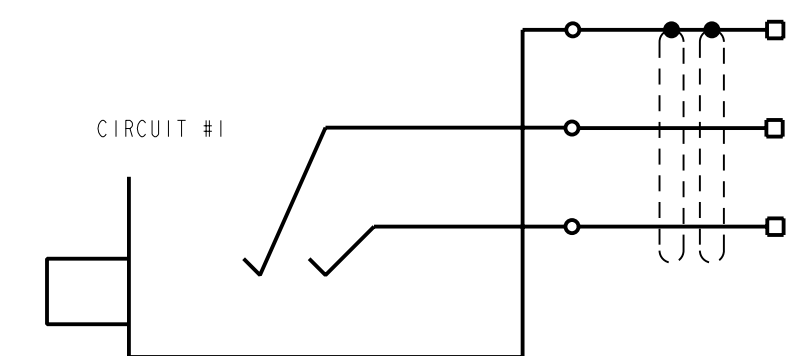
Address: A1208, Overseas Decoration Building, #122 Zhenhua RD., Futian, Shenzhen, China





SCALE 1:4

NON-NORMALLED



NOTES:

- 1) 96 TT JACKS:
A) FRAME AND ASSEMBLY SCREWS ARE NICKEL PLATED.
B) SWITCHING CONTACTS ARE GOLD PLATED.
- 2) FOR REAR PANEL IDC CONNECTION USE SWITCHCRAFT #PTI PUNCH DOWN TOOL.
- 3) SPLIT MARKING STRIPS INTO 4 SETS OF 3 ROW STRIPS.

CUSTOMER DRAWING

STAR SYMBOL DENOTES CRITICAL DIMENSION UNLESS OTHERWISE SPECIFIED 1. ALL DIMENSIONS IN INCHES - TWO PLACE DECIMALS ±0.01 - THREE PLACE DECIMALS ±0.005 - ANGLES ±1° - ALL DIA. CONCENTRIC WITHIN 0.005 T.I.R. 2. FEATURES ON THE SAME CENTERLINE MUST BE ALIGNED WITHIN ±0.002 3. REMOVE ALL BURRS					THIS DRAWING DESCRIBES A DESIGN CONSIDERED PROPRIETARY IN NATURE, DEVELOPED AND MANUFACTURED BY SWITCHCRAFT INC. AND IS RELEASED ON A CONFIDENTIAL BASIS FOR IDENTIFICATION PURPOSES ONLY.				
					SIZE	WIDTH	MULT	LBS/M	TEMPER
FINISH			MATERIAL						
SPEC No.			SPEC No.						
FIRST USED ON			SCALE						
DATE DRAWN			BY	CHKD	APVD				
10-Sep-04			JL	JF	JF				
			9-10-04 9-10-04						
NAME					PART No.				
DIGITAL PATCH PANEL					TTPW96K3NN				
REVISIONS					REV				
REV	ECO NUMBER	DATE	BY	APVD	A				
A	RELEASE TO PROD. 24779	9-10-04	JL	JF					

