



Chipsmall Limited consists of a professional team with an average of over 10 year of expertise in the distribution of electronic components. Based in Hongkong, we have already established firm and mutual-benefit business relationships with customers from,Europe,America and south Asia,supplying obsolete and hard-to-find components to meet their specific needs.

With the principle of “Quality Parts,Customers Priority,Honest Operation,and Considerate Service”,our business mainly focus on the distribution of electronic components. Line cards we deal with include Microchip,ALPS,ROHM,Xilinx,Pulse,ON,Everlight and Freescale. Main products comprise IC,Modules,Potentiometer,IC Socket,Relay,Connector.Our parts cover such applications as commercial,industrial, and automotives areas.

We are looking forward to setting up business relationship with you and hope to provide you with the best service and solution. Let us make a better world for our industry!



## Contact us

Tel: +86-755-8981 8866 Fax: +86-755-8427 6832

Email & Skype: info@chipsmall.com Web: www.chipsmall.com

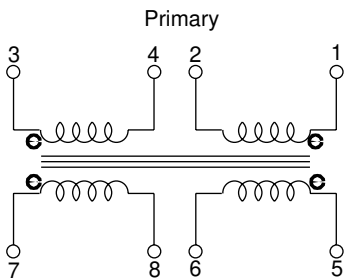
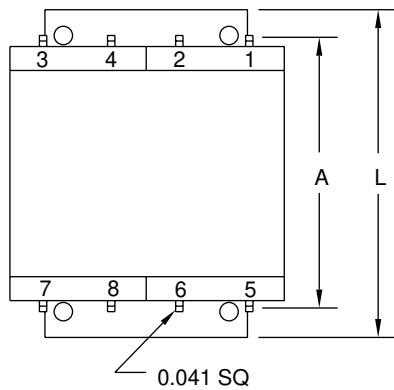
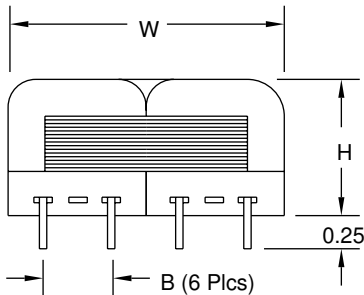
Address: A1208, Overseas Decoration Building, #122 Zhenhua RD., Futian, Shenzhen, China



# Low Profile Power Transformers

## Special Features

- Dual-primary for 115V and 230V, 50/60Hz input
- Dual-secondary output selections, parallel or series connection
- Split bobbin non-concentric winding to minimize electrostatic coupling
- U-core construction to reduce RF radiation
- Dielectric strength 2000Vrms



Secondary

TX Series			
Part Number	VA Rated	Secondary Parallel	Secondary Series
TX3 - 5V	3	5V @600 mA	10V CT @300 mA
TX3 - 6.3V	3	6.3V @476 mA	12.6V CT @238 mA
TX3 - 8V	3	8V @375 mA	16V CT @187 mA
TX3 - 10V	3	10V @300 mA	20V CT @150 mA
TX3 - 12V	3	12V @250 mA	24V CT @125 mA
TX3 - 15V	3	15V @200 mA	30V CT @100 mA
TX3 - 17V	3	17V @187 mA	34V CT @93 mA
TX3 - 20V	3	20V @150 mA	40V CT @75 mA
TX3 - 28V	3	28V @125 mA	56V CT @62 mA
TX3 - 44V	3	44V @88 mA	88V CT @44 mA
TX3 - 60V	3	60V @50 mA	120V CT @25 mA
TX3 - 115V	3	115V @26 mA	230V CT @13 mA
TX6 - 5V	6	5V @1.2 A	10V CT @600 mA
TX6 - 6.3V	6	6.3V @950 mA	12.6V CT @475 mA
TX6 - 8V	6	8V @750 mA	16V CT @375 mA
TX6 - 10V	6	10V @600 mA	20V CT @300 mA
TX6 - 12V	6	12V @500 mA	24V CT @250 mA
TX6 - 15V	6	15V @400 mA	30V CT @200 mA
TX6 - 17V	6	17V @350 mA	34V CT @175 mA
TX6 - 20V	6	20V @300 mA	40V CT @150 mA
TX6 - 28V	6	28V @210 mA	56V CT @105 mA
TX6 - 44V	6	44V @135 mA	88V CT @67 mA
TX6 - 60V	6	60V @100 mA	120V CT @50 mA
TX6 - 115V	6	115V @50 mA	230V CT @26 mA
TX12 - 5V	12	5V @2.4 A	10V CT @1.2 A
TX12 - 6.3V	12	6.3V @1.9 A	12.6V CT @950 mA
TX12 - 8V	12	8V @1.5 A	16V CT @750 mA
TX12 - 10V	12	10V @1.2 A	20V CT @600 mA
TX12 - 12V	12	12V @1.0 A	24V CT @500 mA
TX12 - 15V	12	15V @800 mA	30V CT @400 mA
TX12 - 17V	12	17V @700 mA	34V CT @350 mA
TX12 - 20V	12	20V @600 mA	40V CT @300 mA
TX12 - 28V	12	28V @425 mA	56V CT @210 mA
TX12 - 44V	12	44V @270 mA	88V CT @135 mA
TX12 - 60V	12	60V @200 mA	120V CT @100 mA
TX12 - 115V	12	115V @100 mA	230V CT @50 mA

VA Rated	A	B	L	W	H
3	1.60	0.375	1.87	1.56	0.65
6	1.60	0.375	1.87	1.56	0.85
12	2.00	0.500	2.50	2.00	1.07

Primary connection: 115 V input across pin 1, 2 with 3 connect to 1, 4 connect to 2  
 230 V input across pin 1, 4 with 2 connect to 3

Secondary parallel connection: Output across 5, 6 with 7 connect to 5, 8 connect to 6

Secondary series connection: Output across 5, 8 with 6 connect to 7

**J.W. Miller**  
MAGNETICS

306 E. Alondra Blvd., Gardena, CA 90247-1059 • (310) 515-1720 • FAX (310) 515-1962

[www.jwmiller.com](http://www.jwmiller.com)