



Chipsmall Limited consists of a professional team with an average of over 10 year of expertise in the distribution of electronic components. Based in Hongkong, we have already established firm and mutual-benefit business relationships with customers from,Europe,America and south Asia,supplying obsolete and hard-to-find components to meet their specific needs.

With the principle of “Quality Parts,Customers Priority,Honest Operation,and Considerate Service”,our business mainly focus on the distribution of electronic components. Line cards we deal with include Microchip,ALPS,ROHM,Xilinx,Pulse,ON,Everlight and Freescale. Main products comprise IC,Modules,Potentiometer,IC Socket,Relay,Connector.Our parts cover such applications as commercial,industrial, and automotives areas.

We are looking forward to setting up business relationship with you and hope to provide you with the best service and solution. Let us make a better world for our industry!



Contact us

Tel: +86-755-8981 8866 Fax: +86-755-8427 6832

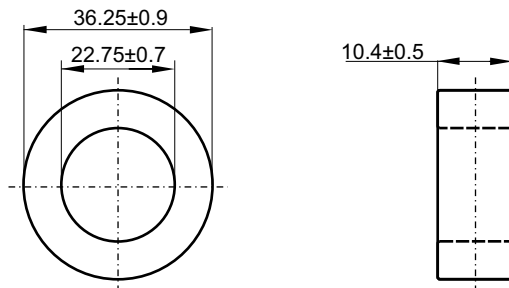
Email & Skype: info@chipsmall.com Web: www.chipsmall.com

Address: A1208, Overseas Decoration Building, #122 Zhenhua RD., Futian, Shenzhen, China



Nazwa / Name
Numer kodu / Code number

TX36/23/10-3C90
4327 030 57141



Magnetical dimensions according to: / Właściwości magnetyczne zgodne z: IEC 205

| | | | | |
|----------------------------------|------------------------------------|-------------------------------|------------------|------------------------------|
| $\Sigma l/A$ (mm ⁻¹) | $\Sigma l/A^2$ (mm ⁻³) | A_e : 63.93 mm ² | l_e : 89.65 mm | V_e : 5731 mm ³ |
| 1.4 | 0.022 | | | Weight:/Waga: ≈ 27 g |

Specified value / Wartości specyfikowane

| Symbol | Nominal | Tolerance | Unit | Frequency | Induction | Equipment | Temperature |
|--------|---------|------------|-----------|-----------------------|-------------------|------------------------|--------------------|
| Symbol | Nominał | Tolerancja | Jednostka | Częstotliwość f [kHz] | Indukcyjność [mT] | (Sprzęt pomiarowy) (1) | Temperatura t [°C] |
| Al | 2060 | ±20% | nH | 10 | ≤0.1 | Agilent 4284A | 25±3 |
| Pv (2) | 0.64 | ≤ | W | 25 | 200 | --- | 100 |
| | 0.64 | | | 100 | 100 | | |

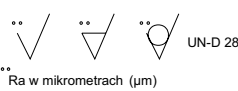
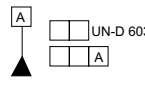
(1) Or similar / Lub podobny

(2) Average within specified value / Wartość średnia w zakresie wartości specyfikowanych
 Individual values could go up to +10% / Pojedyncze wartości mogą być większe o 10%

VISUAL REQUIREMENTS according to: I-15-002

KONTROLA WIZUALNA według: I-15-002

High voltage insulation >2kV / Napięcie przebicia izolacji >2kV

| | | | | | | | | | | | |
|--|--|---|--|---|--|---|--|--|--|--|--|
|  | | Tolerances unless otherwise stated Tolerancja (jeśli nie ustalono inaczej) Dimensions Wymiary ±3% Angle Kąt | |  | | Name Nazwisko Jarosław Przybysz | | Signature Podpis Mariusz Borkiewicz | | Date Data 09-02-02 | |
| General Roughness Chropowatość Unit Jednostka mm. Scale None Skala Brak PROJ.EURO PROJ.EURO | | MATERIAL 3C90 acc. to MATERIAL 3C90 zgodnie z: | | KPN-K1959 | | Check Sprawdził Approval Zatwierdził Other Inne | | TYPE NUMBER / TYP LAB REF No. | | UNCONTROLLED COPY generated electronically, conform with original up to the date of its creation KOPIA NIEKONTROLOWANA wygenerowana elektronicznie, zgodna z oryginałem w dniu jego zatwierdzenia | |
| Status/Status | | TX36/23/10-3C90 Toroid coated: Epoxy Cream RAL 1014 Toroid pokryty: Epoxy kremowy RAL 1014 | | 4327 030 57140 | | SHEETS STRONY 1 SHEET STRONA 110-02 | | DATE DATA 09-02-02 | | A-4 | |
| Issued by: Wydano przez: M.Zagórowska / K.S. | | SUPERSEDES ZASTĘPUJE | | Property of WŁAŚCICIEL | | Ferroxcube Polska Sp. z o.o. SKIERNIEWICE, POLAND | | DATE DATA 09-02-02 | | A-4 | |