



Chipsmall Limited consists of a professional team with an average of over 10 year of expertise in the distribution of electronic components. Based in Hongkong, we have already established firm and mutual-benefit business relationships with customers from,Europe,America and south Asia,supplying obsolete and hard-to-find components to meet their specific needs.

With the principle of “Quality Parts,Customers Priority,Honest Operation,and Considerate Service”,our business mainly focus on the distribution of electronic components. Line cards we deal with include Microchip,ALPS,ROHM,Xilinx,Pulse,ON,Everlight and Freescale. Main products comprise IC,Modules,Potentiometer,IC Socket,Relay,Connector.Our parts cover such applications as commercial,industrial, and automotives areas.

We are looking forward to setting up business relationship with you and hope to provide you with the best service and solution. Let us make a better world for our industry!



Contact us

Tel: +86-755-8981 8866 Fax: +86-755-8427 6832

Email & Skype: info@chipsmall.com Web: www.chipsmall.com

Address: A1208, Overseas Decoration Building, #122 Zhenhua RD., Futian, Shenzhen, China



ALUMINUM ELECTROLYTIC CAPACITORS

UAS

Wide Temperature Range, Miniature Type Permissible
Abnormal Voltage

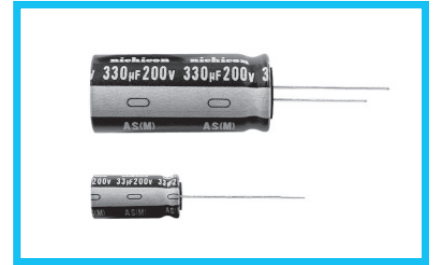


Smaller

- Improved safety feature for abnormally excessive voltage.
- High ripple current product.
- Compliant to the RoHS directive (2011/65/EU).



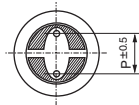
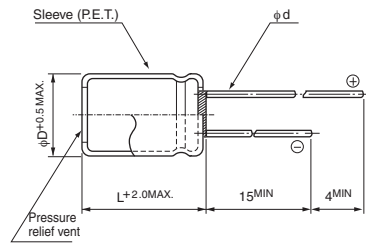
UAS



Specifications

Item	Performance Characteristics			
Category Temperature Range	-40 to +105°C			
Rated Voltage Range	200V, 400V			
Rated Capacitance Range	4.7 to 330μF			
Capacitance Tolerance	±20% at 120Hz, 20°C			
Leakage Current	After 1 minute's application of rated voltage at 20°C, leakage current is 0.04CV+100 (μA) or less.			
Tangent of loss angle (tan δ)	Rated voltage (V)	200	400	
	tan δ (MAX.)	0.15	0.15	
Measurement frequency: 120Hz at 20°C				
Stability at Low Temperature	Rated voltage (V)		200	
	Impedance ratio ZT / Z20 (MAX.)	Z-25°C / Z+20°C	3	
		Z-40°C / Z+20°C	6	
		400	8	
			10	
Measurement frequency : 120Hz				
Endurance	The specifications listed at right shall be met when the capacitors are restored to 20°C after D.C. bias plus rated ripple current is applied for 2000 hours at 105°C, the peak voltage shall not exceed the rated voltage.		Capacitance change	Within ±20% of the initial capacitance value
			tan δ	200% or less than the initial specified value
			Leakage current	Less than or equal to the initial specified value
Shelf Life	After leaving capacitors under no load at 105°C for 1000 hours they shall meet the specified values for the endurance characteristics listed above.			
Safety Performance	The pressure relief vent will operate in normal conditions, with no dangerous conditions such as flames, ignitions or dispersion of pieces of the capacitor and / or case.			
	voltage (V)	Test conditions		
		Limited DC current	Test Voltage	
		200	4A (5A : 330μF)	300VDC and 375VDC
400	2A (4A : 100μF or more)	500VDC and 600VDC		
Marking	Printed with white color letter on dark brown sleeve.			

Radial Lead Type

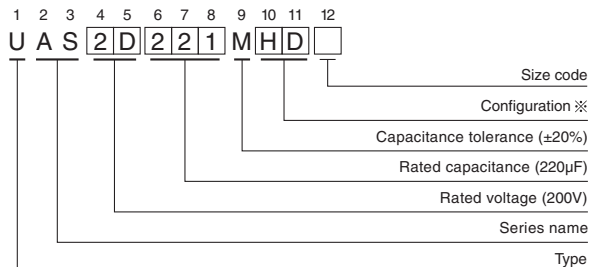


	(mm)			
φD	10	12.5	16	18
P	5.0	5.0	7.5	7.5
φd	0.6	0.6 ^{*)}	0.8	0.8

*) In case L>25 for φ12.5 (D) case sizes, lead diameter φ0.8 (d) will be applied.

● Please refer to page 20 about the end seal configuration.

Type numbering system (Example : 200V 220μF)



※ Configuration	
φ D	Pb-free leadwire Pb-free PET sleeve
10	PD
12.5 to 18	HD

Dimensions

Cap. (μF)	Code	200 (2D)				400 (2G)			
		φ10	φ12.5	φ16	φ18	φ10	φ12.5	φ16	φ18
4.7	4R7					10 x 9	60		
22	220						12.5 x 20	165	
27	270						12.5 x 25	200	
33	330	10 x 20	160					16 x 20	225
39	390							16 x 25	255
47	470	10 x 25	195	▲12.5 x 20	195			16 x 25	290
56	560			12.5 x 20	210			▲18 x 20	280
68	680			12.5 x 25	320			16 x 31.5	340
82	820			12.5 x 25	360			16 x 35.5	385
100	101			12.5 x 31.5	430	▲16 x 20	430	▲18 x 31.5	430
120	121							18 x 35.5	490
150	151					16 x 25	460	▲18 x 20	460
180	181					16 x 31.5	600	▲18 x 25	600
220	221							18 x 31.5	710
270	271							18 x 35.5	890
330	331							18 x 40	910
									Case size φD x L (mm)
									Rated ripple

Frequency coefficient of rated ripple current

Frequency	50, 60Hz	120Hz	300Hz	1kHz	10kHz or more
Coefficient	0.80	1.00	1.25	1.40	1.60

Rated ripple current (mArms) at 105°C 120Hz

▲: In case of low profile type, [6] will be put at 12th digit of type numbering system.

Please refer to page 20, 21, 22 about the formed or taped product spec.

Please refer to page 4 for the minimum order quantity.

CAT.8100F