



Chipsmall Limited consists of a professional team with an average of over 10 year of expertise in the distribution of electronic components. Based in Hongkong, we have already established firm and mutual-benefit business relationships with customers from,Europe,America and south Asia,supplying obsolete and hard-to-find components to meet their specific needs.

With the principle of “Quality Parts,Customers Priority,Honest Operation,and Considerate Service”,our business mainly focus on the distribution of electronic components. Line cards we deal with include Microchip,ALPS,ROHM,Xilinx,Pulse,ON,Everlight and Freescale. Main products comprise IC,Modules,Potentiometer,IC Socket,Relay,Connector.Our parts cover such applications as commercial,industrial, and automotives areas.

We are looking forward to setting up business relationship with you and hope to provide you with the best service and solution. Let us make a better world for our industry!



Contact us

Tel: +86-755-8981 8866 Fax: +86-755-8427 6832

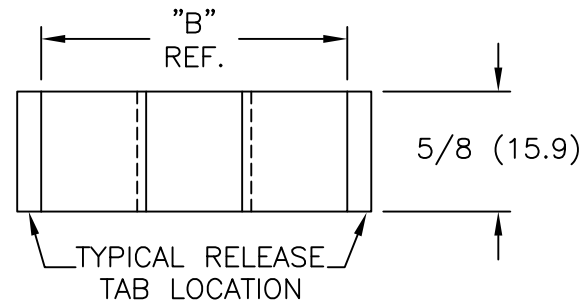
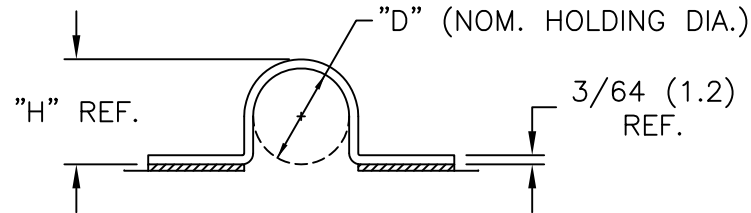
Email & Skype: info@chipsmall.com Web: www.chipsmall.com

Address: A1208, Overseas Decoration Building, #122 Zhenhua RD., Futian, Shenzhen, China



PART NO.	"B"	"D"	"H"
UC-2-RT	1-7/32 (30.9)	1/8 (3.2)	11/64 (4.4)
UC-4-RT	1-11/32 (34.1)	1/4 (6.4)	19/64 (7.5)
*UC-6-RT	1-15/32 (37.3)	3/8 (9.5)	27/64 (10.7)
*UC-8-RT	1-19/32 (40.4)	1/2 (12.7)	35/64 (13.9)

*PARTS AVAILABLE BY SPECIAL ORDER.



NOTES:

- MAT'L: RIGID PVC (RMS-04)
- COLOR: BLACK
CLEAR PVC AVAILABLE BY SPECIAL ORDER.
- TAPE: 1/32" THICK DOUBLE SIDED ADHESIVE (RMS-15)
- CUSTOM LENGTHS AVAILABLE BY SPECIAL ORDER.

TITLE: U - CLIP			DWG IN IN(MM)		FINAL	
E	SEE CO 200604 FOR CHANGES	SK 12.01.10	FILE # UC	DWN: P.B.	DT: 08-02-94	PART #
D	SEE ECN # 1135	SJ 03.07.06	MAT'L: SEE NOTES	CHKD:	ENG:	SEE TABLE
C	CHANGED NOTE 2 & ADDED NOTE 4	SJ 03.26.02	RE: RICHCO INC.	RICHCO INC. ENG@RICHCO-INC.COM (773) 539-4060		PRINT TYPE
B	CORRECTED TAPE THICKNESS TO 1/32"	JK 2.18.00				CA
A	ADDED NOTES, CORRECTED TAPE THICKNESS TO 1/16"	JK 2.10.00				
REV	DESCRIPTION	ENGR DATE				