



Chipsmall Limited consists of a professional team with an average of over 10 year of expertise in the distribution of electronic components. Based in Hongkong, we have already established firm and mutual-benefit business relationships with customers from,Europe,America and south Asia,supplying obsolete and hard-to-find components to meet their specific needs.

With the principle of “Quality Parts,Customers Priority,Honest Operation,and Considerate Service”,our business mainly focus on the distribution of electronic components. Line cards we deal with include Microchip,ALPS,ROHM,Xilinx,Pulse,ON,Everlight and Freescale. Main products comprise IC,Modules,Potentiometer,IC Socket,Relay,Connector.Our parts cover such applications as commercial,industrial, and automotives areas.

We are looking forward to setting up business relationship with you and hope to provide you with the best service and solution. Let us make a better world for our industry!



## Contact us

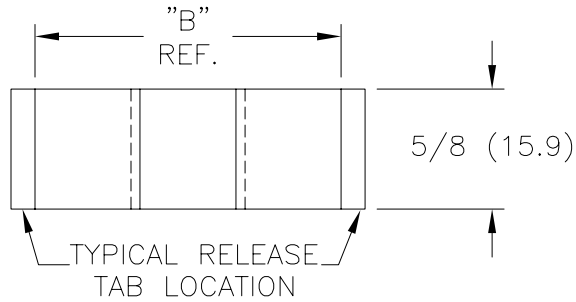
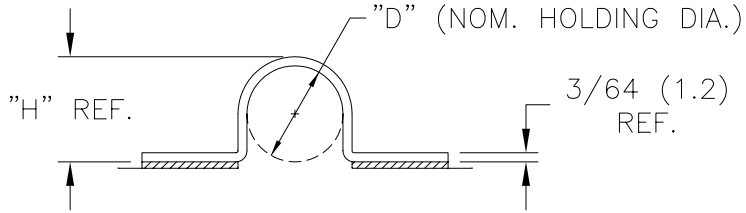
Tel: +86-755-8981 8866 Fax: +86-755-8427 6832

Email & Skype: info@chipsmall.com Web: www.chipsmall.com

Address: A1208, Overseas Decoration Building, #122 Zhenhua RD., Futian, Shenzhen, China



PART NO.	"B"	"D"	"H"
UC-2-RT	1-7/32 (30.9)	1/8 (3.2)	11/64 (4.4)
UC-4-RT	1-11/32 (34.1)	1/4 (6.4)	19/64 (7.5)
UC-6-RT	1-15/32 (37.3)	3/8 (9.5)	27/64 (10.7)
UC-8-RT	1-19/32 (40.4)	1/2 (12.7)	35/64 (13.9)



NOTES:

- MAT'L: RIGID PVC (RMS-04)
- COLOR: BLACK  
CLEAR PVC AVAILABLE BY SPECIAL ORDER.
- TAPE: 1/32" THICK DOUBLE SIDED  
ADHESIVE (RMS-15)
- CUSTOM LENGTHS AVAILABLE BY SPECIAL ORDER.

TITLE: U - C L I P			DWG IN IN(MM)		FINAL	
D	SEE ECN # 1135	SJ 03.07.06	TOLERANCES UNLESS NOTED	FILE # UC	DWN: P.B.	DT: 08-02-94
C	CHANGED NOTE 2 & ADDED NOTE 4	SJ 03.26.02	.XX=±.020	MAT'L: SEE NOTES	CHKD:	ENG:
B	CORRECTED TAPE THICKNESS TO 1/32"	JK 2.18.00	.XXX=±.015	RE: RICHCO INC.	RICHCO INC.	
A	ADDED NOTES, CORRECTED TAPE THICKNESS TO 1/16"	JK 2.10.00	FRAC=±1/32	ENG@RICHCO-INC.COM		PART # SEE TABLE
REV	DESCRIPTION	ENGR DATE	ANG=±1°	(773) 539-4060		PRINT TYPE CA