



Chipsmall Limited consists of a professional team with an average of over 10 year of expertise in the distribution of electronic components. Based in Hongkong, we have already established firm and mutual-benefit business relationships with customers from,Europe,America and south Asia,supplying obsolete and hard-to-find components to meet their specific needs.

With the principle of “Quality Parts,Customers Priority,Honest Operation,and Considerate Service”,our business mainly focus on the distribution of electronic components. Line cards we deal with include Microchip,ALPS,ROHM,Xilinx,Pulse,ON,Everlight and Freescale. Main products comprise IC,Modules,Potentiometer,IC Socket,Relay,Connector.Our parts cover such applications as commercial,industrial, and automotives areas.

We are looking forward to setting up business relationship with you and hope to provide you with the best service and solution. Let us make a better world for our industry!



Contact us

Tel: +86-755-8981 8866 Fax: +86-755-8427 6832

Email & Skype: info@chipsmall.com Web: www.chipsmall.com

Address: A1208, Overseas Decoration Building, #122 Zhenhua RD., Futian, Shenzhen, China

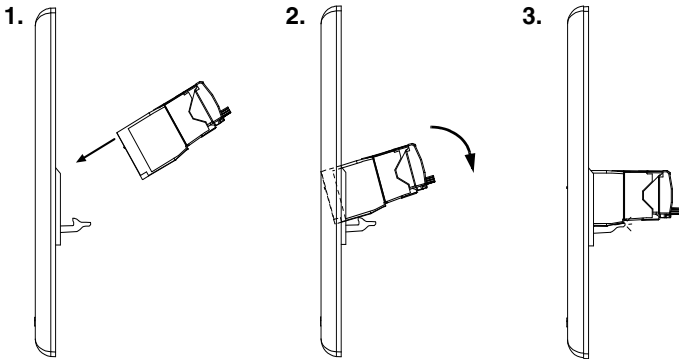




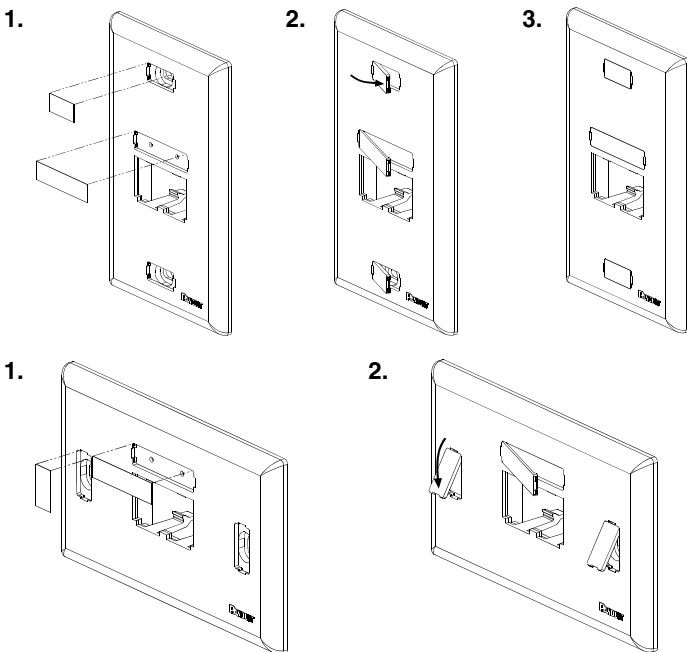
Note: Custom #4 type screw head requires a #1 phillips or 3/16" flat screwdriver be used to install Ultimate ID faceplate products.

UICFP** & UICFPH** INSTALLATION

Module Installation

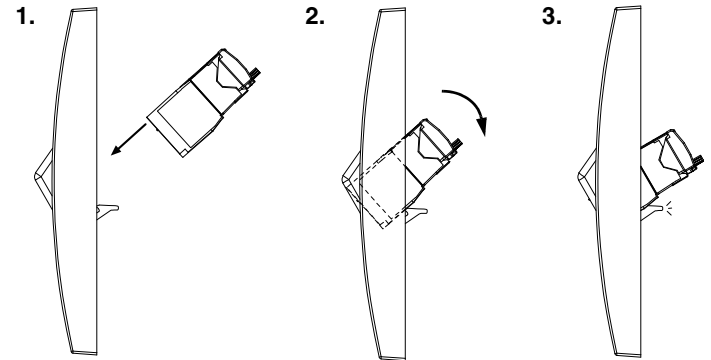


Label / Label Cover Installation

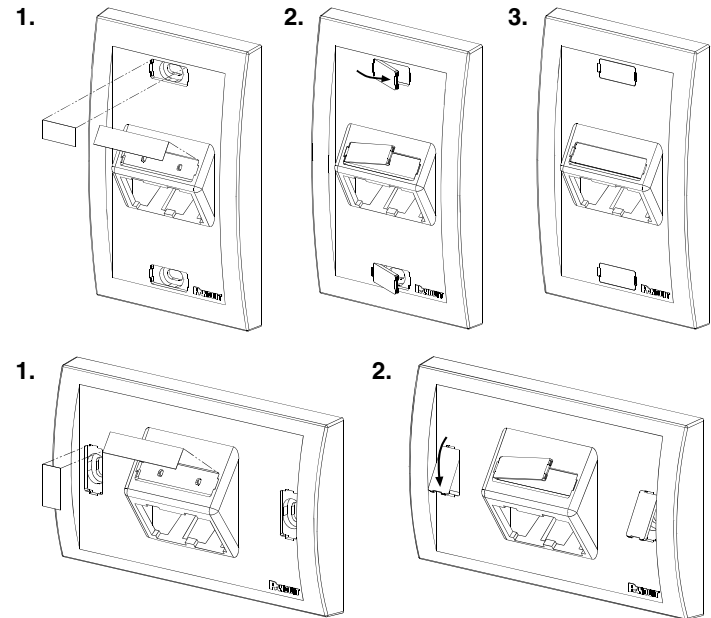


UICFPSE** & UICFPHSE** INSTALLATION

Module Installation



Label / Label Cover Installation



Icon Installation (Icons sold as optional accessory)



Icons available with image of Phone (UICIP**-C) or Computer (UICID**-C)

* Write on labels are not included with these faceplates per TIA/EIA-606-A standard which states: "To maximize legibility, all labels shall be printed or generated by a mechanical device, and shall not be written by hand." (Refer to table on back side for label products)

** Denotes color.

Ultimate ID Label Part Numbers

| Label Part # | Height | Length | Color | Std. Pkg. Qty. |
|--------------|--------|--------|-------|----------------|
|--------------|--------|--------|-------|----------------|

Computer Printable Labels

| | | | | |
|-------------|---------|---------|----------------|----------|
| UILJ1 | .236" | .680" | White | 5 sheets |
| UILJ2 | .236" | 1.315" | White | 5 sheets |
| UILJ3 | .236" | 1.950" | White | 5 sheets |
| UILJ4 | .236" | 2.585" | White | 5 sheets |
| UILJCOMBO | Various | Various | White | 5 sheets |
| UILJ1EI | .236" | .680" | Electric Ivory | 5 sheets |
| UILJ2EI | .236" | 1.315" | Electric Ivory | 5 sheets |
| UILJ3EI | .236" | 1.950" | Electric Ivory | 5 sheets |
| UILJ4EI | .236" | 2.585" | Electric Ivory | 5 sheets |
| UILJCOMBOEI | Various | Various | Electric Ivory | 5 sheets |

Non-Adhesive Label Cassette

(for use with PanTher LS8E and Cougar LS9 Thermal Transfer Printers)

| | | | | |
|----------|-------|-----|---------------|---|
| *UILS8BW | .236" | 25' | Black / White | 1 |
|----------|-------|-----|---------------|---|

* See Panduit LS8E and LS9 Operations Manual to explain serialized function for label printing and page function for non-serialized label printing.

For Instructions in Local Languages
and Technical Support:

www.panduit.com/resources/install_maintain.asp

PANDUIT

www.panduit.com

E-mail:
techsupport@panduit.com

Phone:
866-405-6654