



Chipsmall Limited consists of a professional team with an average of over 10 year of expertise in the distribution of electronic components. Based in Hongkong, we have already established firm and mutual-benefit business relationships with customers from,Europe,America and south Asia,supplying obsolete and hard-to-find components to meet their specific needs.

With the principle of “Quality Parts,Customers Priority,Honest Operation,and Considerate Service”,our business mainly focus on the distribution of electronic components. Line cards we deal with include Microchip,ALPS,ROHM,Xilinx,Pulse,ON,Everlight and Freescale. Main products comprise IC,Modules,Potentiometer,IC Socket,Relay,Connector.Our parts cover such applications as commercial,industrial, and automotives areas.

We are looking forward to setting up business relationship with you and hope to provide you with the best service and solution. Let us make a better world for our industry!



Contact us

Tel: +86-755-8981 8866 Fax: +86-755-8427 6832

Email & Skype: info@chipsmall.com Web: www.chipsmall.com

Address: A1208, Overseas Decoration Building, #122 Zhenhua RD., Futian, Shenzhen, China



μPG2409T6X-EVAL-A

Evaluation Board

- Description
- Insertion Loss of Through Board
- Assembly Drawing

Description:

The uPG2409T6X-EVAL-A evaluation board provides a quick and convenient means of evaluating the performance of the NEC uPG2409T6X switch. In addition to the device, the board provides DC block capacitors, power supply bypass capacitors, and RF and DC connectors.

A DC block capacitor is required at all RF ports. On this board, two parallel capacitors of 22pF are used for this purpose. This configuration minimizes the mismatch effect associated with the serial capacitors over a wide frequency range. In a real application where the operation frequency range is relatively narrow, one DC block capacitor usually is sufficient. The user should select the appropriate capacitor value according to the operation frequencies and the type of capacitor selected. Generally the performance of the switch circuit is not sensitive, to a certain extent, to the value of DC block capacitors.

A 1000pF DC bypass capacitor is used on all control lines. They should be placed close to the device. For high speed applications the user may choose smaller capacitance or no capacitor at all.

Information on Board Material:

The board material is 20 mil thick Duroid 6002. Its dielectric constant is 2.94.

Switch Logic Table:

The following table lists the logic table for switch states.

Vcont1	Vcont2	RFC – RF1	RFC – RF2
H	L	ON	OFF
L	H	OFF	ON

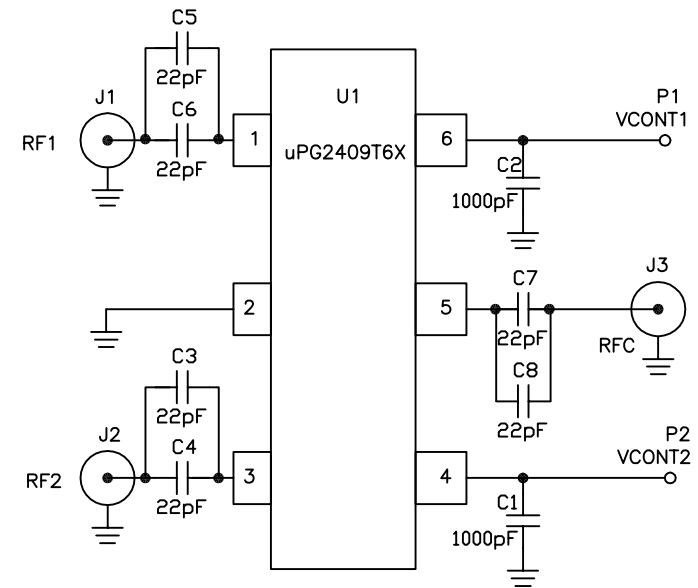
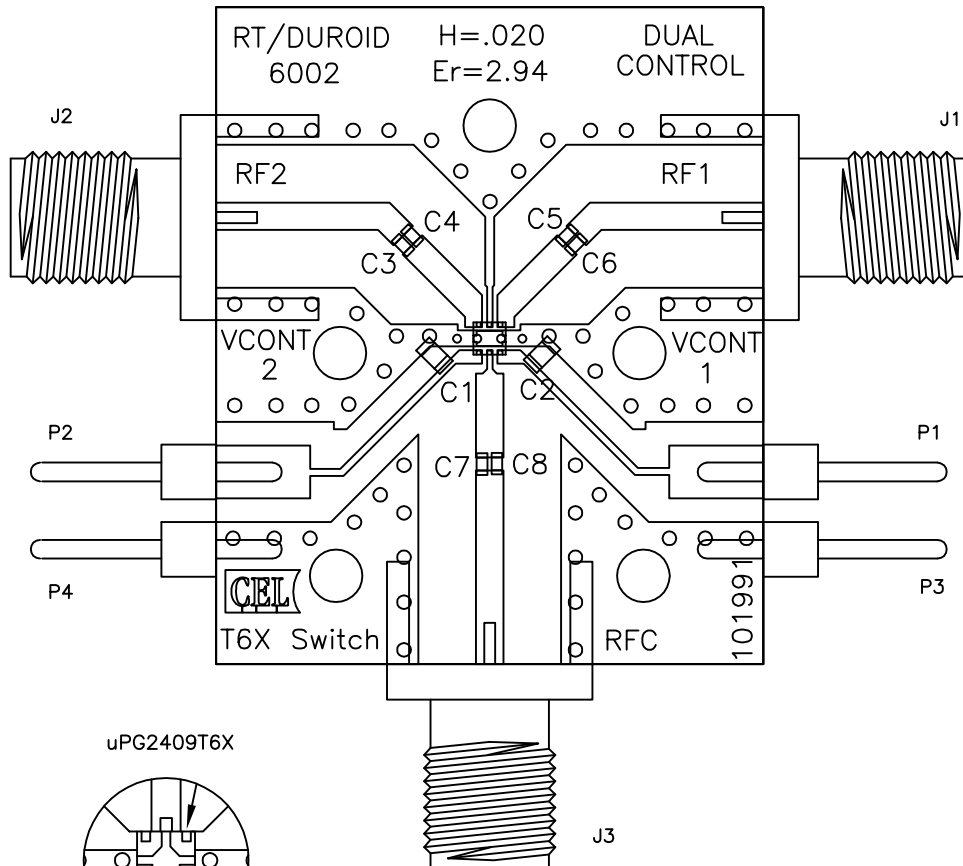
Insertion Loss of Through Board:

The measured insertion loss (S21) of the board is from three contributions: the switch insertion loss, the loss in the DC block capacitors and the insertion loss of the through board. To accurately estimate the insertion loss due to the switch circuit, the board loss should be subtracted from the measured S21 value. The table below lists the board loss at different frequencies. The effect of the capacitor loss is not corrected since in real applications DC block capacitors are required. Nevertheless the capacitor loss can be significant, particularly at high frequencies. For applications where insertion loss is critically important, the DC block capacitor should be carefully chosen to minimize its loss at operation frequency.

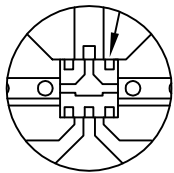
INPUT FREQUENCY (GHz)	BOARD LOSS (dB)
0.5	0.05
1.0	0.07
1.5	0.11
2.0	0.12
2.5	0.13
3.0	0.15
4.0	0.19
5.0	0.23
6.0	0.29

REVISIONS				
ZONE	LTR	DESCRIPTION	DATE	APPROVED

Note: C1 and C2 should be placed close to device



uPG2409T6X



MARKING FOR PIN1 IS ON TOP OF CHIP

PACKAGE MARKING: G5R

QTY	PART OR IDENTIFYING NO.	NOMENCLATURE OR DESCRIPTION	MATERIAL/SPECIFICATION	ITEM NO.
1	TF-101481	DRAWING	TEST BLOCK	7
2	GRM1885C1H102JA01D	C1,C2	0603 1000pF CAP MURATA	6
6	GRM1555C1H220JZ01D	C3,C4,C5,C6,C7,C8	0402 22pF CAP MURATA	5
4	2340-6111 TG	P1,P2,P3,P4	PIN HEADER 3M	4
3	5308-2CC	J1,J2,J3	SMA FEMALE CONNECTOR TENSOLITE	3
1	uPG2409T6X	U1	IC NEC uPG2409T6X GaAs Switch	2
1	CL-101991	DRAWING	COMPONENT LAYOUT DRAWING	1

UNLESS OTHERWISE SPECIFIED DIMENSIONS ARE IN INCHES TOLERANCES	
DECIMALS .XX± .01	ANGULAR ± 1°
DO NOT SCALE DRAWING	
MATERIAL	
FINISH	
NEXT ASSY	USED ON
APPLICATION	

APPROVALS	
Drawing by: M Dong	06/15/2009
Designed by: M Dong	06/15/2009
Checked by:	
Project Engineer:	
Quality Control:	

CEL CALIFORNIA EASTERN LABS
4590 PATRICK HENRY DR. SANTA CLARA CA. 95054

TITLE: ASSEMBLY DRAWING
uPG2409T6X-EVAL-A

SIZE C	FSCM NO.	DWG NO. AD-101991	REV -
SCALE NONE	RELEASE DATE	PROTOTYPE	SHEET 1 OF 1