

Chipsmall Limited consists of a professional team with an average of over 10 year of expertise in the distribution of electronic components. Based in Hongkong, we have already established firm and mutual-benefit business relationships with customers from,Europe,America and south Asia,supplying obsolete and hard-to-find components to meet their specific needs.

With the principle of “Quality Parts,Customers Priority,Honest Operation,and Considerate Service”,our business mainly focus on the distribution of electronic components. Line cards we deal with include Microchip,ALPS,ROHM,Xilinx,Pulse,ON,Everlight and Freescale. Main products comprise IC,Modules,Potentiometer,IC Socket,Relay,Connector.Our parts cover such applications as commercial,industrial, and automotives areas.

We are looking forward to setting up business relationship with you and hope to provide you with the best service and solution. Let us make a better world for our industry!



Contact us

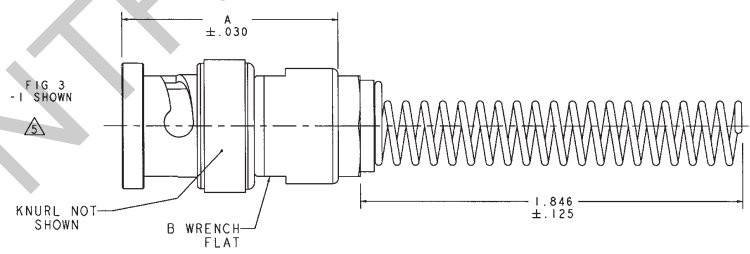
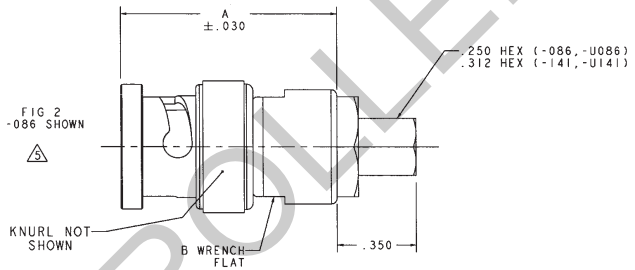
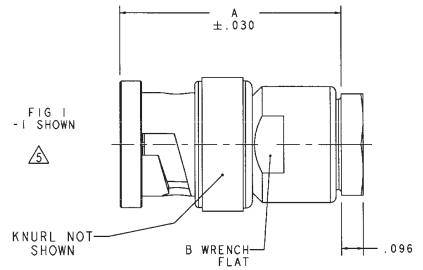
Tel: +86-755-8981 8866 Fax: +86-755-8427 6832

Email & Skype: info@chipsmall.com Web: www.chipsmall.com

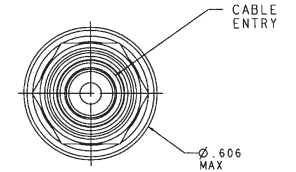
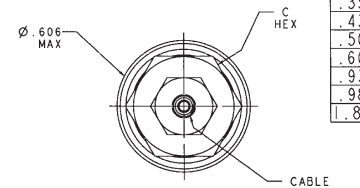
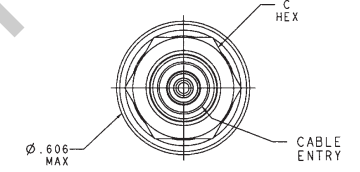
Address: A1208, Overseas Decoration Building, #122 Zhenhua RD., Futian, Shenzhen, China

RED INDICATES ORIGINAL

DASH NO	FIG	CABLES ACCOMMODATED	A DIM	B FLATS	C HEX	ASSEMBLE PER
-1		RG-58				
-U1		ESSEX 621-715				
-2		RG-59				
-2A		BELDEN 8279				
-U2A		AT&T 730A				
-2B		RG-223				
-3		RG-55	.931	.437	.437	TAI-101
-U3		RG-122				
-3A		BELDEN 8218				
-4		RG-174				
-U4		RG-187				
-5		RG-196				
-5A		HEWLETT-PACKARD 8120-1107				
-U5A		BELDEN 9231	.988	.500	.500	TAI-119
-5B		RG-5				
-U5B		RG-6				
-6		RG-303				
-U6		RG-180				
-6E		GRUMMAN GC875GPI				
-U6E		RG-187 DBL SHLD				
-7		BELDEN 8228	.931	.437	.437	TAI-101
-21		275-3991 MICRODOT				
-U21		616-569 AMPEX				
-22		810 RAYCHEM				
-U22		RG-304				
-31		9248 BELDEN				
-U31		BRAND-REX B749				
-34		GORE C06C032				
-U34		88281 BELDEN	.988	.500	.500	TAI-119
-36		89120 BELDEN				
-U36		89555 BELDEN				
-37		734A, AT&T	.931	.437	.437	TAI-101
-U37		RG-405				
-41		RG-402				
-U41						
-44						
-U44						
-51						
-U51						
-52						
-U52						
-53						
-U53						
-63						
-U63						
-086						
-U086						
-141						
-U141						



REVISIONS				1-0369	SH 1C
REV	ECO NO	DESCRIPTION	DNW	APPROVED	DATE
AE	11583	DASH NO COLUMN, -U1 MAX -119; SHEET 2, MADE CORRECTION IN -1 SECTION VIEW; SEE ECO	LSR	[Signature]	4/24/96



INCH	MM
.005	0.13
.030	0.76
.096	2.44
.125	3.18
.250	6.35
.312	7.92
.350	8.89
.437	11.10
.500	12.70
.606	15.39
.931	23.65
.988	25.10
1.846	46.89

△ IF BEND RELIEF SPRING REQUIRED ADD SUFFIX "BR" TO MODEL NO. (SEE FIG 3) (NOT AVAILABLE WITH CABLE GROUPS -6, -U6, -6E, -U6E, -51, -U51, -52, -U52, -63, -U63, -086, -U086, -141 & -U141)

△ FOR CABLE GROUPS -1 & -U1 SUPPLY 1 EA ACA1 FOR CABLE GROUPS -2 & -U2 SUPPLY 1 EA ACA2 FOR CABLE GROUPS -5 & -U5 SUPPLY 1 EA ACA5 MAY BE ASSEMBLED TO CABLE/CONNECTOR ASSY USING 3M SCOTCHGRIP NO. 1099 PLASTIC ADHESIVE, OR EQUIV.

△ IF PLASTIC STRAIN RELIEF REQUIRED, ADD SUFFIX "BT" TO MODEL NO. (ONLY AVAILABLE WITH -1, -U1, -2, -U2, -5, -U5)

- 4. BNC COAXIAL CABLE PLUG BOTH 50 & 75 OHM VERSIONS
- 3. DASH NO DENOTES CABLE GROUP EXCEPT "U" PREFIX DENOTES 75 OHM VERSION
- 2. FINISH: TFS-1A(NICKEL)(TOTAL BUILD-UP .000180-.000450)
- 1. ALL DIM ARE IN INCHES

QTY	DESCRIPTION	PART NUMBER	ITEM
12-09	105-1004	1-0204	110-0002
105-0717	105-0870	1-0207	1-0227
305-0541	105-0698	1-0212	105-0944
105-0158	105-0697	1-0215	105-0007
305-0383	105-0659	1-0216	105-0449
305-0187	105-0461	1-0218	105-0394
105-1016	105-0295	1-0304	

DWG LSR 6-26-96
 CHK [Signature]
 ENGR [Signature]
 APPR [Signature] 4/24/96
 SCALE 4/1 DATE 10-22-93 SHEET 1C