



Chipsmall Limited consists of a professional team with an average of over 10 year of expertise in the distribution of electronic components. Based in Hongkong, we have already established firm and mutual-benefit business relationships with customers from,Europe,America and south Asia,supplying obsolete and hard-to-find components to meet their specific needs.

With the principle of "Quality Parts,Customers Priority,Honest Operation,and Considerate Service",our business mainly focus on the distribution of electronic components. Line cards we deal with include Microchip,ALPS,ROHM,Xilinx,Pulse,ON,Everlight and Freescale. Main products comprise IC,Modules,Potentiometer,IC Socket,Relay,Connector.Our parts cover such applications as commercial,industrial, and automotives areas.

We are looking forward to setting up business relationship with you and hope to provide you with the best service and solution. Let us make a better world for our industry!



Contact us

Tel: +86-755-8981 8866 Fax: +86-755-8427 6832

Email & Skype: info@chipsmall.com Web: www.chipsmall.com

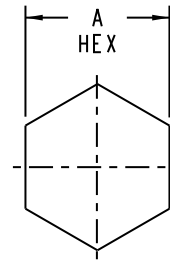
Address: A1208, Overseas Decoration Building, #122 Zhenhua RD., Futian, Shenzhen, China



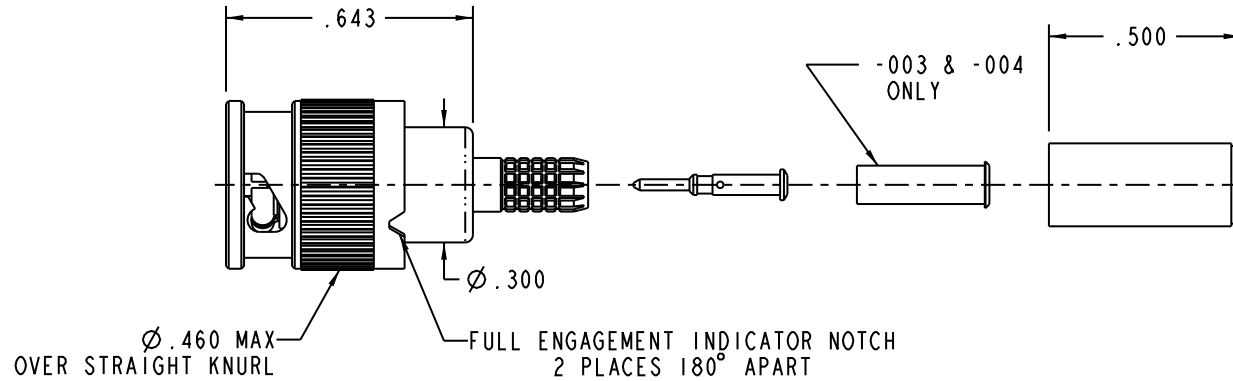
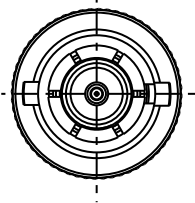
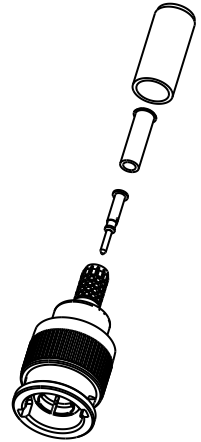
DASH NO	CABLES ACCOMMODATED	A HEX	ASSEMBLE PER
-003	TIMES 405	.178	TAI-252
-004	RG-179		
-009	8218, BELDEN YR23023 BELDEN 21-597, ESSEX		
-013	RG-59	.255	
-014	8212, BELDEN	.255	
-025	734A, LUCENT	.255	
-026	735A, LUCENT	.178	
-031	CDT RA7000	.213	

DATA CONTAINED IN THIS DOCUMENT IS PROPRIETARY TO CINCH CONNECTIVITY SOLUTIONS AND SHALL NOT BE DISCLOSED, COPIED OR USED FOR PROCUREMENT OR MANUFACTURE WITHOUT EXPRESS WRITTEN PERMISSION

REVISIONS			
REV	DESCRIPTIONS	DATE	APPROVED
K	ECO 53381	6/29/11	TKO

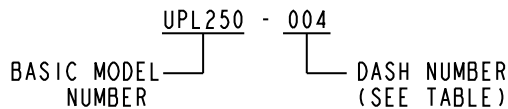


RECOMMENDED
HEX CRIMP



-004 SHOWN



5. EXAMPLE OF COMPLETE MODEL NUMBER:



- RoHS 6 COMPLIANT
- 75Ω MINI "BNC" STYLE COAXIAL CABLE PLUG.
- ALL COMPONENTS SHOWN ARE SUPPLIED LOOSE

FINISH: TFS-1A (NICKEL)

NOTES: UNLESS OTHERWISE SPECIFIED.

INTERPRET DRAWING PER MIL-STD-100. DIMENSIONS ARE IN INCHES AND INCLUDE FINISH THICKNESS UNLESS OTHERWISE SPECIFIED.		TOL: UNLESS SPECIFIED. .XX ± .02 .XXX ± .010 ANGLE ± 1°		 cinch CONNECTIVITY SOLUTIONS a bel group			
DRW BPK	6/28/11	MATERIAL:	TITLE: UPL250				
N/A	CHK TKO	6/29/11	FINISH: 	SIZE A	CAGE CODE 14949	DRAWING NO. 1-0592	REV. K
BLANK LENGTH (REF. ONLY)	MANUF	APPROVED	DO NOT SCALE DWG	SCALE 2/1	DATE 4/3/01	SHEET 1 OF 2	
N/A	PROF TITLE NO. 1-0592						