



Chipsmall Limited consists of a professional team with an average of over 10 year of expertise in the distribution of electronic components. Based in Hongkong, we have already established firm and mutual-benefit business relationships with customers from,Europe,America and south Asia,supplying obsolete and hard-to-find components to meet their specific needs.

With the principle of “Quality Parts,Customers Priority,Honest Operation,and Considerate Service”,our business mainly focus on the distribution of electronic components. Line cards we deal with include Microchip,ALPS,ROHM,Xilinx,Pulse,ON,Everlight and Freescale. Main products comprise IC,Modules,Potentiometer,IC Socket,Relay,Connector.Our parts cover such applications as commercial,industrial, and automotives areas.

We are looking forward to setting up business relationship with you and hope to provide you with the best service and solution. Let us make a better world for our industry!



Contact us

Tel: +86-755-8981 8866 Fax: +86-755-8427 6832

Email & Skype: info@chipsmall.com Web: www.chipsmall.com

Address: A1208, Overseas Decoration Building, #122 Zhenhua RD., Futian, Shenzhen, China



US232 User Manual and Installation Guide

Introduction

The US232 evaluation cable can be used for testing the functionality of the FT8U232AM USB UART device and drivers prior to design-in. The electronics are housed in an attractive translucent blue enclosure with a matching 1m clear translucent cable. The US232 evaluation cable includes a Drivers and Utilities CD complete with WHQL certified VCP drivers for Windows XP, installation guides and the FTDI Product Data CD, which contains an off-line version of the data sheets, schematics and application notes from FTDI's web site.



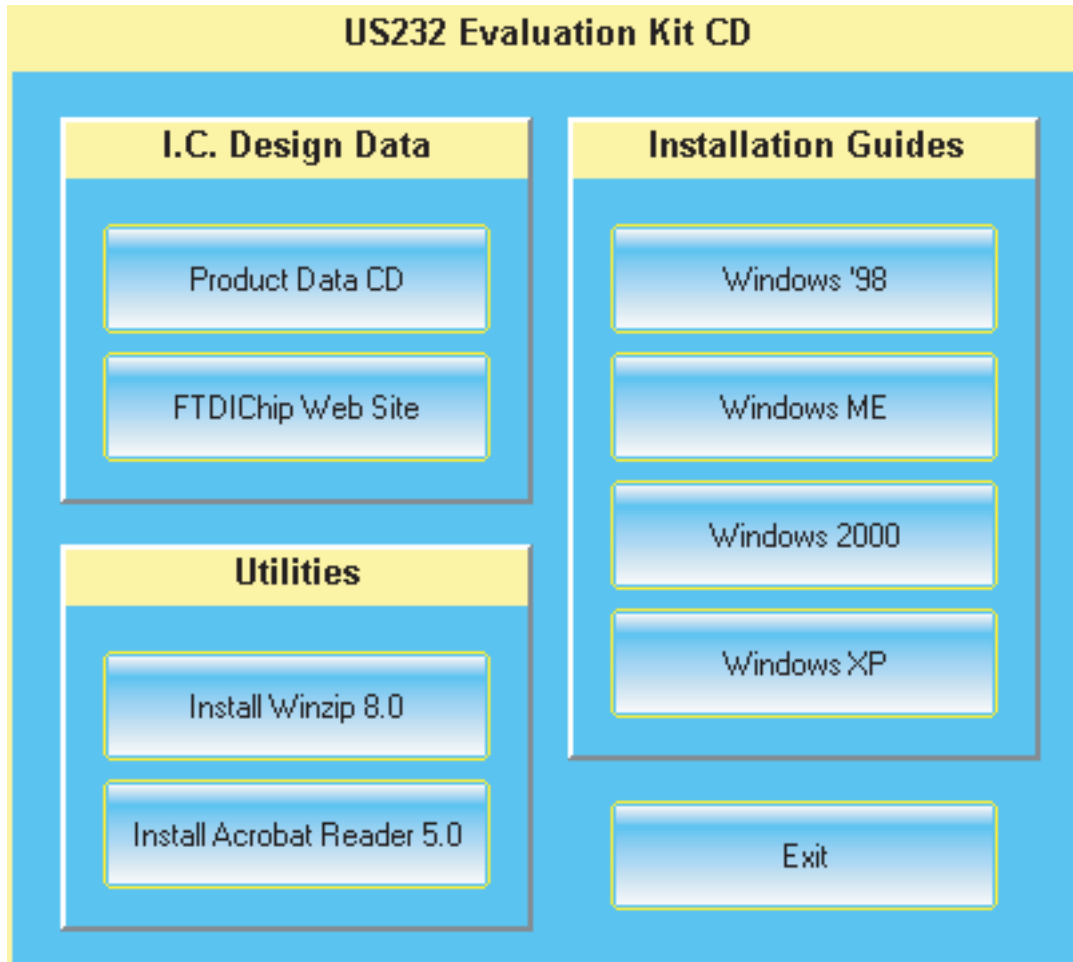
Features

- Data transfer rates from 300 baud to 460,800 baud
- Internal 128 byte TX buffer and 384 byte RX buffer
- Standard DB-9/M RS232 connector
- Full Modem Support Signal Set
- Hardware assisted RTS/CTS , DSR/DTR and X-On/ X-Off handshaking options
- Transmit and Receive LED Indicators
- Integral 1m USB Cable
- Works with USB 1.1 and USB 2.0 Host Controllers
- Full Speed USB data transfer rates
- USB – No IRQ or DMA resources required
- Remote Wakeup Capable
- Uses FTDI's FT8U232AM USB UART i.c.
- Powered from USB – no external power adapter required
- Windows '98 / ME / 2000 / XP drivers
- MAC OS-8, OS-9 and OS-X drivers
- Drivers included in Linux release 2.40 and greater

Application Areas

- Modems
- ISDN Terminal Adapters
- Serial PDA Interfacing
- Digital Cameras
- Smart Card Readers
- Terminals
- Serial Printers
- Serial Point of Sale (P.O.S.) devices
- Industrial Control Devices
- RS232 Peripheral Upgrades

Installation Instructions (P.C.)



Before plugging the adapter into the PC's USB port, please insert the US232 Driver and Utility CD into the CD drive of the PC. The PC will then display a menu (pictured above) showing the installation guides for the different versions of Windows. These guides are written in HTML and will display on the internet browser of your PC. We recommend that you review the installation guide for your versions of Windows prior to proceeding.

Plug the adapter into a USB (or USB hub) port on your PC and follow the procedure outlined in the installation guide. Installation usually only takes a few seconds if you are already familiar with the procedure. Should you wish to uninstall the drivers at a later date, please consult the uninstall guide on the CD which explains the correct procedure. For your convenience, the US232 CD also includes installable versions of WINZIP 8.0 and Adobe Acrobat Reader 5.0 should you not already have these on your system. Also included is the FTDI Product Data CD which contains data sheets, application notes and schematics for FTDI's USB UART and USB FIFO USB devices. For the most up to date information, visit FTDI's web site – a convenient button is provided to launch your Internet browser and take you directly to the web site.

Installation Instructions (MAC / Linux)

MAC drivers should be downloaded from the "Drivers and Utilities" page of the FTDI web site. Instructions on installation can be found there. Linux systems with an O.S. version of 4.20 and higher already have the driver included with the O.S. – no installation is required – just plug the device into the PC.