



Chipsmall Limited consists of a professional team with an average of over 10 year of expertise in the distribution of electronic components. Based in Hongkong, we have already established firm and mutual-benefit business relationships with customers from,Europe,America and south Asia,supplying obsolete and hard-to-find components to meet their specific needs.

With the principle of "Quality Parts,Customers Priority,Honest Operation,and Considerate Service",our business mainly focus on the distribution of electronic components. Line cards we deal with include Microchip,ALPS,ROHM,Xilinx,Pulse,ON,Everlight and Freescale. Main products comprise IC,Modules,Potentiometer,IC Socket,Relay,Connector.Our parts cover such applications as commercial,industrial, and automotives areas.

We are looking forward to setting up business relationship with you and hope to provide you with the best service and solution. Let us make a better world for our industry!



Contact us

Tel: +86-755-8981 8866 Fax: +86-755-8427 6832

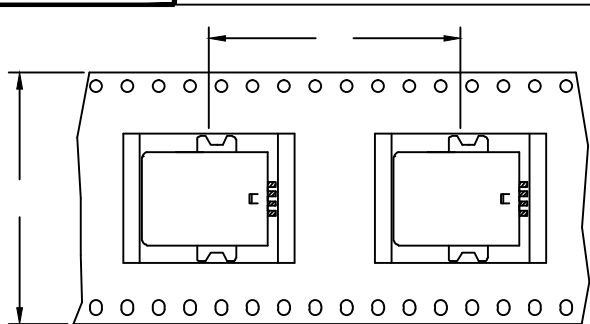
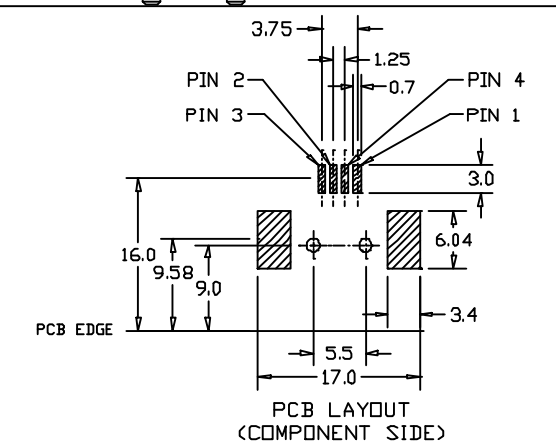
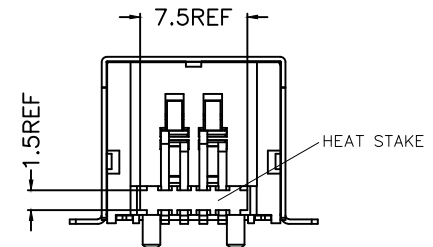
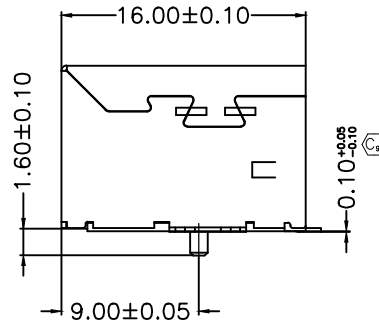
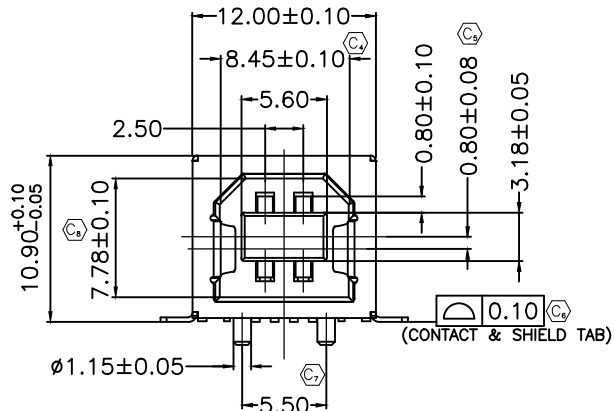
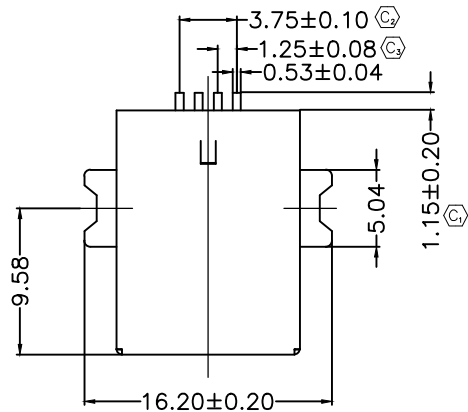
Email & Skype: info@chipsmall.com Web: www.chipsmall.com

Address: A1208, Overseas Decoration Building, #122 Zhenhua RD., Futian, Shenzhen, China

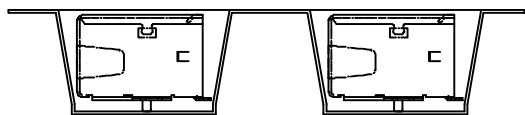


REVISION T

DO NOT SCALE FROM THIS PRINT



USER DIRECTION OF UNREELING —
POCKET NOT DETAILED



USB-B-S-X-X-SM-X-XX

TYPE
-B

CONFIGURATION
-S: SINGLE

PLATING
-F: 1u" FLASH GOLD IN CONTACT AREA, MATTE TIN ON TAIL
-S: 30u" SELECTIVE GOLD IN CONTACT AREA, MATTE TIN ON TAIL

OPTIONS
-TR: TAPE AND REEL (LEAVE BLANK FOR TRAY PACKAGING)

E & I OPTIONS
-R: ROHS COMPLIANT-LEAD FREE WITH HIGH TEMP INSULATOR

RA TERMINATION
-SM: SURFACE MOUNT

COLOR
-B: BLACK
-W: WHITE

NOTES:

1. Ⓢ REPRESENTS CRITICAL DIMENSION.
2. NOTE DELETED.
3. SHIELD CHANGE TO CONTINUOUS PLATING

UNLESS OTHERWISE SPECIFIED, DIMENSIONS ARE MILLIMETERS. TOLERANCES ARE:
DECIMALS ANGLES

PROPRIETARY NOTE
THIS DOCUMENT CONTAINS INFORMATION CONFIDENTIAL AND PROPRIETARY TO SAMTEC INC. AND SHALL NOT BE REPRODUCED OR TRANSFERRED TO OTHER DOCUMENTS OR DISCLOSED TO OTHERS OR USED FOR ANY PURPOSE OTHER THAN THAT FOR WHICH IT WAS OBTAINED WITHOUT THE EXPRESSED WRITTEN CONSENT OF SAMTEC INC.

DO NOT SCALE DRAWING
INSULATOR: PA9T (RATED UL94V-0)
CONTACT: PHOS BRONZE
SHELL: STEEL, NICKEL PLATED

SHEET SCALE: 1:2

MAX FLASH ALLOWED: .051
MAX GATE VESTIGE: .051
F:\DWG\EXISPRD\ASSEMBLY\10\USB\

samtec

520 PARK EAST BLVD. NEW ALBANY, IN 47150
(812) 944-6733 P.O. BOX 1147 TWX: 810-540-4085

DESCRIPTION:
USB TYPE B RIGHT ANGLE SURFACE MOUNT

DWG. NO.
USB-B-S-X-X-SM-X-XX

BY: J. Riley 02/06/04 SHEET 1 OF 1

CODE: 55322