



Chipsmall Limited consists of a professional team with an average of over 10 year of expertise in the distribution of electronic components. Based in Hongkong, we have already established firm and mutual-benefit business relationships with customers from,Europe,America and south Asia,supplying obsolete and hard-to-find components to meet their specific needs.

With the principle of “Quality Parts,Customers Priority,Honest Operation,and Considerate Service”,our business mainly focus on the distribution of electronic components. Line cards we deal with include Microchip,ALPS,ROHM,Xilinx,Pulse,ON,Everlight and Freescale. Main products comprise IC,Modules,Potentiometer,IC Socket,Relay,Connector.Our parts cover such applications as commercial,industrial, and automotives areas.

We are looking forward to setting up business relationship with you and hope to provide you with the best service and solution. Let us make a better world for our industry!



Contact us

Tel: +86-755-8981 8866 Fax: +86-755-8427 6832

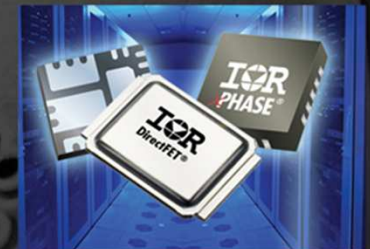
Email & Skype: info@chipsmall.com Web: www.chipsmall.com

Address: A1208, Overseas Decoration Building, #122 Zhenhua RD., Futian, Shenzhen, China



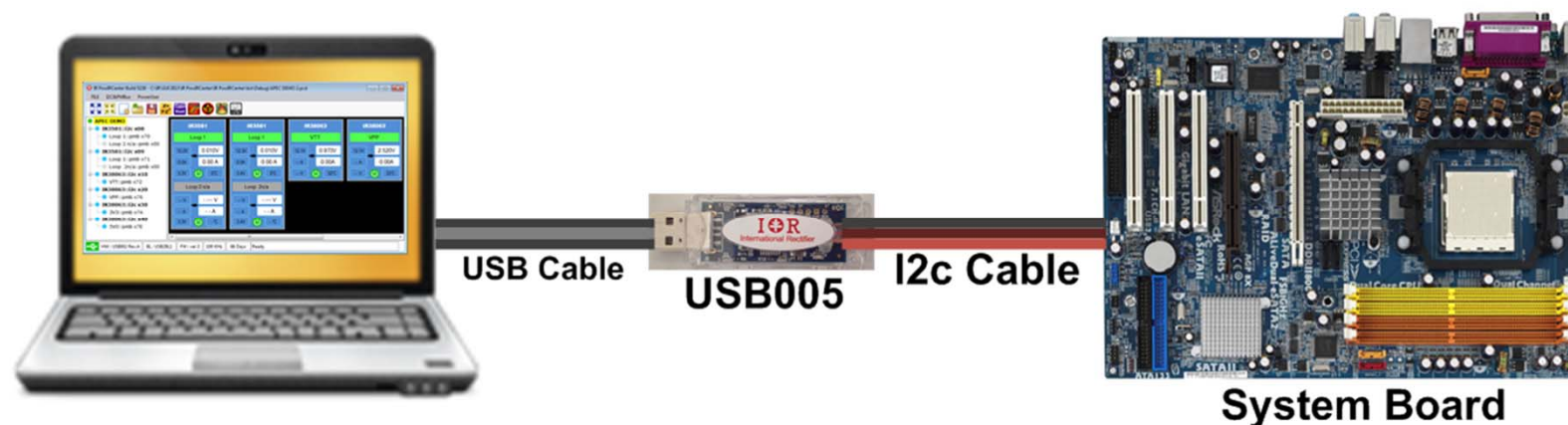
USB005 User Guide

September 2014, v1.0



International
IOR Rectifier

Purpose of the USB005



- Provide interface between IR PowIRCenter GUI and the IR controllers

USB005 Interfaces and Spec



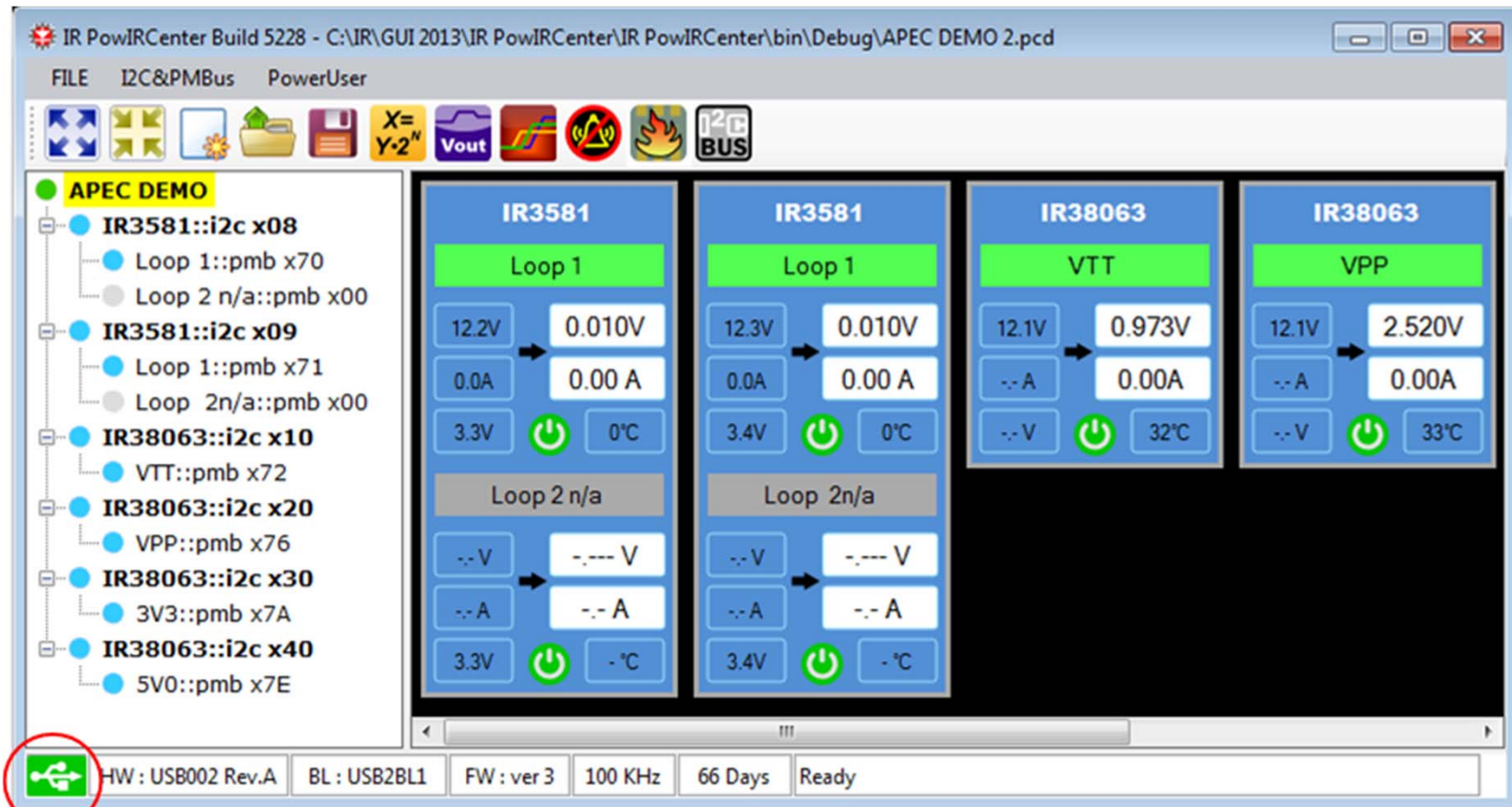
Brown : GND
Red : SDA
Orange : SCL

To PC
USB Port



- No external power supply. Powered by USB 5V connector pin
- i2c speed up to 400 KHz. Speed can be set by IR PowIRCenter GUI.
- Require Silicon Labs USBXpress driver which is included in the IR PowIRCenter GUI installation package.
- USB005 has clear blue casing

Successful USB005 Connection to the GUI



Green color indicates good USB connection between PC and USB005 board