



Chipsmall Limited consists of a professional team with an average of over 10 year of expertise in the distribution of electronic components. Based in Hongkong, we have already established firm and mutual-benefit business relationships with customers from,Europe,America and south Asia,supplying obsolete and hard-to-find components to meet their specific needs.

With the principle of “Quality Parts,Customers Priority,Honest Operation,and Considerate Service”,our business mainly focus on the distribution of electronic components. Line cards we deal with include Microchip,ALPS,ROHM,Xilinx,Pulse,ON,Everlight and Freescale. Main products comprise IC,Modules,Potentiometer,IC Socket,Relay,Connector.Our parts cover such applications as commercial,industrial, and automotives areas.

We are looking forward to setting up business relationship with you and hope to provide you with the best service and solution. Let us make a better world for our industry!



## Contact us

Tel: +86-755-8981 8866 Fax: +86-755-8427 6832

Email & Skype: info@chipsmall.com Web: www.chipsmall.com

Address: A1208, Overseas Decoration Building, #122 Zhenhua RD., Futian, Shenzhen, China



PART NUMBER	"A" (HOLE DIAMETER)	"B" (PANEL THICKNESS)	"C"	"D" REF.	"E"	FIGURE
USR 1131	.197 (5.0)	.158-.276 (4.0-7.0)	.472 (12.0)	.433 (11.0)	.153 (3.9)	1.
USR 1132	.236 (6.0)		.630 (16.0)			2.
USR 1133	.315 (8.0)	.118-.394 (3.0-10.0)	.787 (20.0)	.551 (14.0)	.157 (4.0)	3.

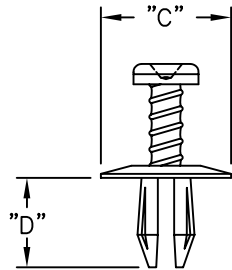
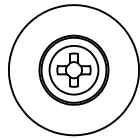


FIG.1.

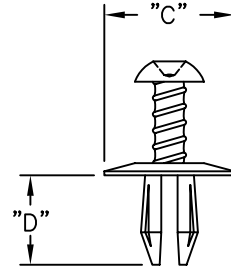
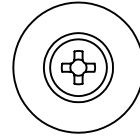


FIG.2.

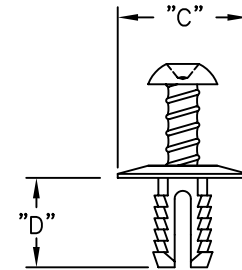
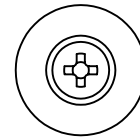
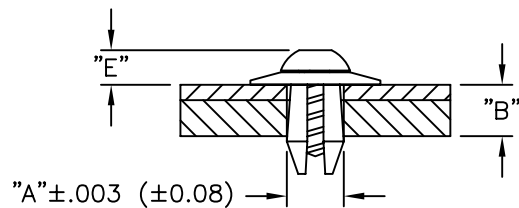


FIG.3.



TYPICAL ASSEMBLY

NOTES:

- MATERIAL: NYLON 6/6 (RMS-115).
- COLOR: BLACK.

TITLE: UNSCREWING SNAP RIVETS			DWG IN IN.(MM)	FINAL	PRINT TYPE
TOLERANCES UNLESS NOTED .XX=±.020 .XXX=±.015 FRAC=1/32 ANG=±1°	FILE # USR MAT'L: SEE NOTES RE: RICHCO INC.	DWN: S.M. DT: 10/30/00	APP: DT:	PART # USR-SERIES	CA
C TABLE CORRECTED SM 01.18.02	B ADDED RMS-115 AND CHANGED FILE NO. S.M 03.29.01	A COMPLETELY RE-DRAWN SM 11.01.00	REV DESCRIPTION ENGR DATE	RICHCO INC. PO BOX 804238, CHICAGO, 60680 (773) 539-4060	