



Chipsmall Limited consists of a professional team with an average of over 10 year of expertise in the distribution of electronic components. Based in Hongkong, we have already established firm and mutual-benefit business relationships with customers from,Europe,America and south Asia,supplying obsolete and hard-to-find components to meet their specific needs.

With the principle of “Quality Parts,Customers Priority,Honest Operation,and Considerate Service”,our business mainly focus on the distribution of electronic components. Line cards we deal with include Microchip,ALPS,ROHM,Xilinx,Pulse,ON,Everlight and Freescale. Main products comprise IC,Modules,Potentiometer,IC Socket,Relay,Connector.Our parts cover such applications as commercial,industrial, and automotives areas.

We are looking forward to setting up business relationship with you and hope to provide you with the best service and solution. Let us make a better world for our industry!



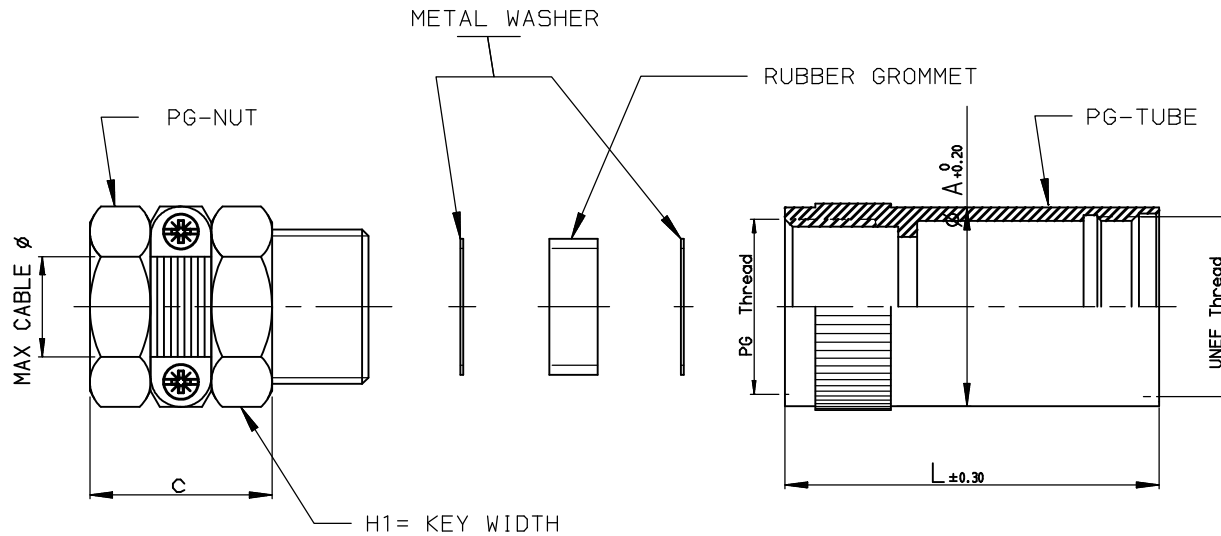
Contact us

Tel: +86-755-8981 8866 Fax: +86-755-8427 6832

Email & Skype: info@chipsmall.com Web: www.chipsmall.com

Address: A1208, Overseas Decoration Building, #122 Zhenhua RD., Futian, Shenzhen, China





MATERIAL

- PG-TUBE : ALUMINIUM ALLOY, NICKEL PLATED.
- WASHER : ZINC-ELECTROPLATED STEEL.
- SCREWS : STAINLESS STEEL.
- RUBBER GROMMET : NEOPRENE BLACK
- PG-NUT AND PRESSURE BAR : POLYAMIDE - UL94-V0, COULOR BLACK.

NOTES

- ALL PIECES ARE PACKED AS LOOSE PIECES IN PLASTIC BAG

PERFORMANCE CHARACTERISTICS

- DEGREE OF WATER PROTECTION : IP65
- OPERATING TEMPERATURE : -55°C to +125°C
- CORROSION SALT SPRAY : 48 HOURS
- RoHS COMPLIANT

CATALOG NUMBER

UTO--JCPGN

| CAT. N°. | UNEF Thread | PG Thread | L | Ø A | C | MAX CABLE Ø | H1 |
|------------|-------------------|-----------|------|------|------|-------------|------|
| UT010JCPGN | 9/16 24-UNEF-2B | PG9 | 42.1 | 17.2 | 14.5 | 11.2 | 19.0 |
| UT012JCPGN | 11/16 24-UNEF-2B | PG11 | 42.1 | 20.8 | 16.0 | 13.5 | 21.0 |
| UT014JCPGN | 13/16 20-UNEF-2B | PG13.5 | 47.1 | 23.8 | 17.0 | 14.5 | 23.0 |
| UT016JCPGN | 15/16 20-UNEF-2B | PG16 | 50.1 | 26.9 | 19.0 | 16.5 | 25.0 |
| UT018JCPGN | 1-1/16 18-UNEF-2B | PG16 | 54.2 | 30.2 | 19.0 | 16.5 | 25.0 |
| UT020JCPGN | 1-3/16 18-UNEF-2B | PG21 | 55.6 | 33.3 | 23.5 | 22.2 | 32.0 |
| UT022JCPGN | 1-5/16 18-UNEF-2B | PG21 | 62.7 | 36.2 | 23.5 | 22.2 | 32.0 |
| UT024JCPGN | 1-7/16 18-UNEF-2B | PG29 | 65.0 | 39.7 | 30.0 | 29.5 | 42.0 |

| | | | | |
|---|---|---|---|-----------------------------------|
| B | 18/06/12 | ADD NOTE : RoHS COMPLIANT | | N.-- |
| ISS | DATE | Latest modification by : | ROUILLARD Ch | MOD N° |
| Designed by: | | ROUILLARD | date: 04/01/06 | Type of drawing: CUSTOMER DRAWING |
| Checked by : | | SEE DISTRIBUTION LIST Date : ON DISTRIBUTION LIST | | |
| TITLE : UTO and UTOW Connectors Cable clamp with metal PG tube and plastic strain relief | | | | |
| SCALE 1 | General angular Tolerances -- | MATERIAL: See note | N° : -- | |
| | General Linear Tolerances: -- | General machining surface texture: -- | Geometric tolerances see NF E 04-552 | PROJECT TTR10 |
| | SOURIAU Route Nationale 23 72470 CHAMPAGNE Tel. (33)02.43.54.35.00 | | This document is the property of SOURIAU It must not be reproduced or communicated without permission in writing from the owners | |
| FORMAT A3 | SOURIAU DRG N° UTOXXJCPGN-C01 | | | SHEET 1/1 |