



Chipsmall Limited consists of a professional team with an average of over 10 year of expertise in the distribution of electronic components. Based in Hongkong, we have already established firm and mutual-benefit business relationships with customers from,Europe,America and south Asia,supplying obsolete and hard-to-find components to meet their specific needs.

With the principle of “Quality Parts,Customers Priority,Honest Operation,and Considerate Service”,our business mainly focus on the distribution of electronic components. Line cards we deal with include Microchip,ALPS,ROHM,Xilinx,Pulse,ON,Everlight and Freescale. Main products comprise IC,Modules,Potentiometer,IC Socket,Relay,Connector.Our parts cover such applications as commercial,industrial, and automotives areas.

We are looking forward to setting up business relationship with you and hope to provide you with the best service and solution. Let us make a better world for our industry!



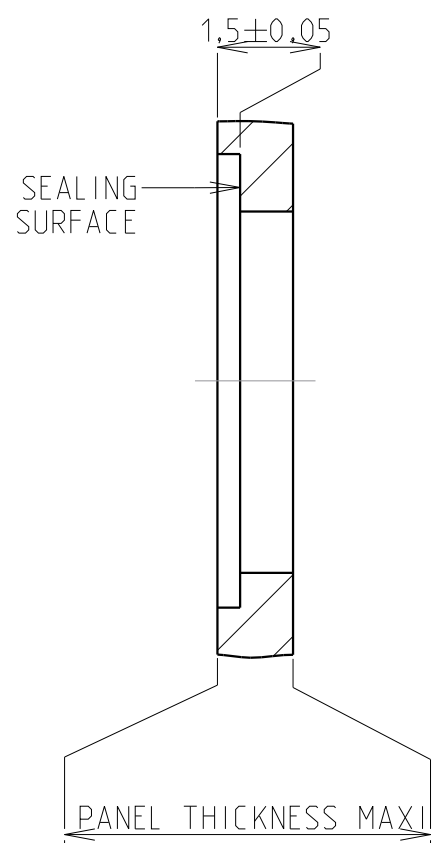
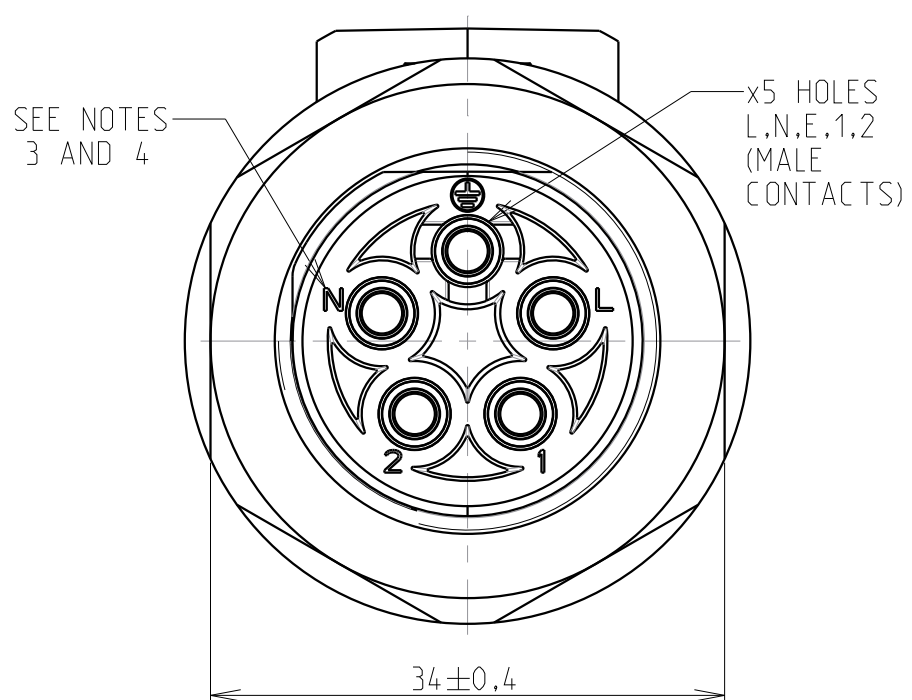
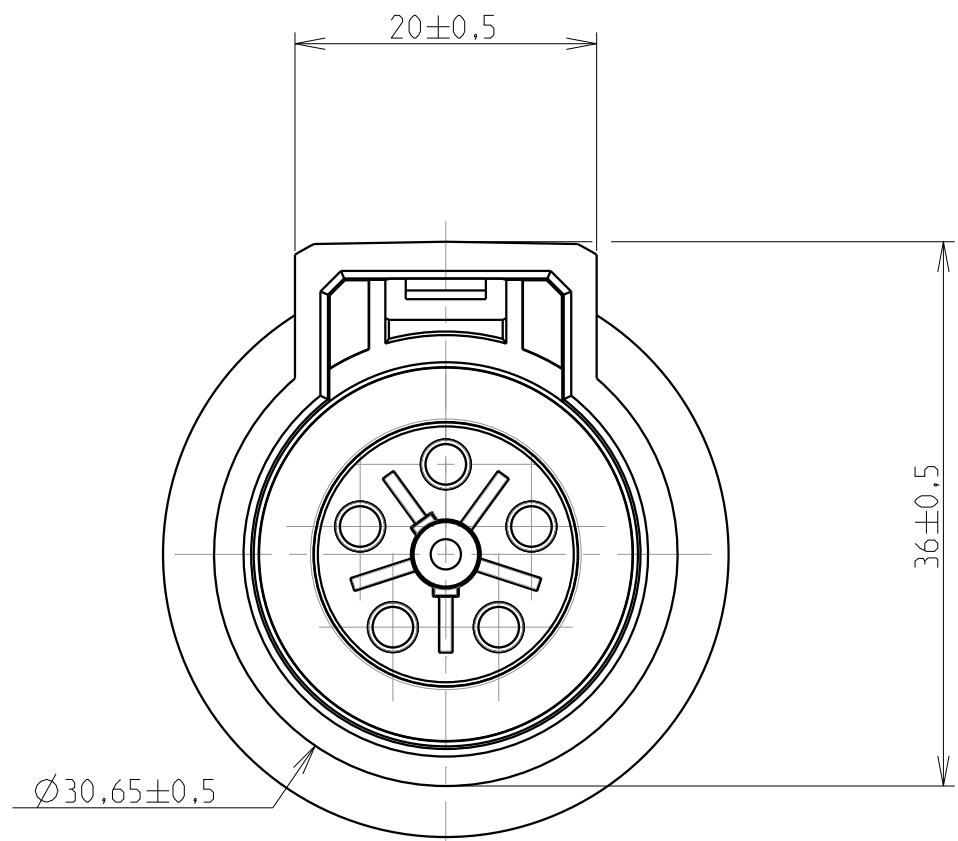
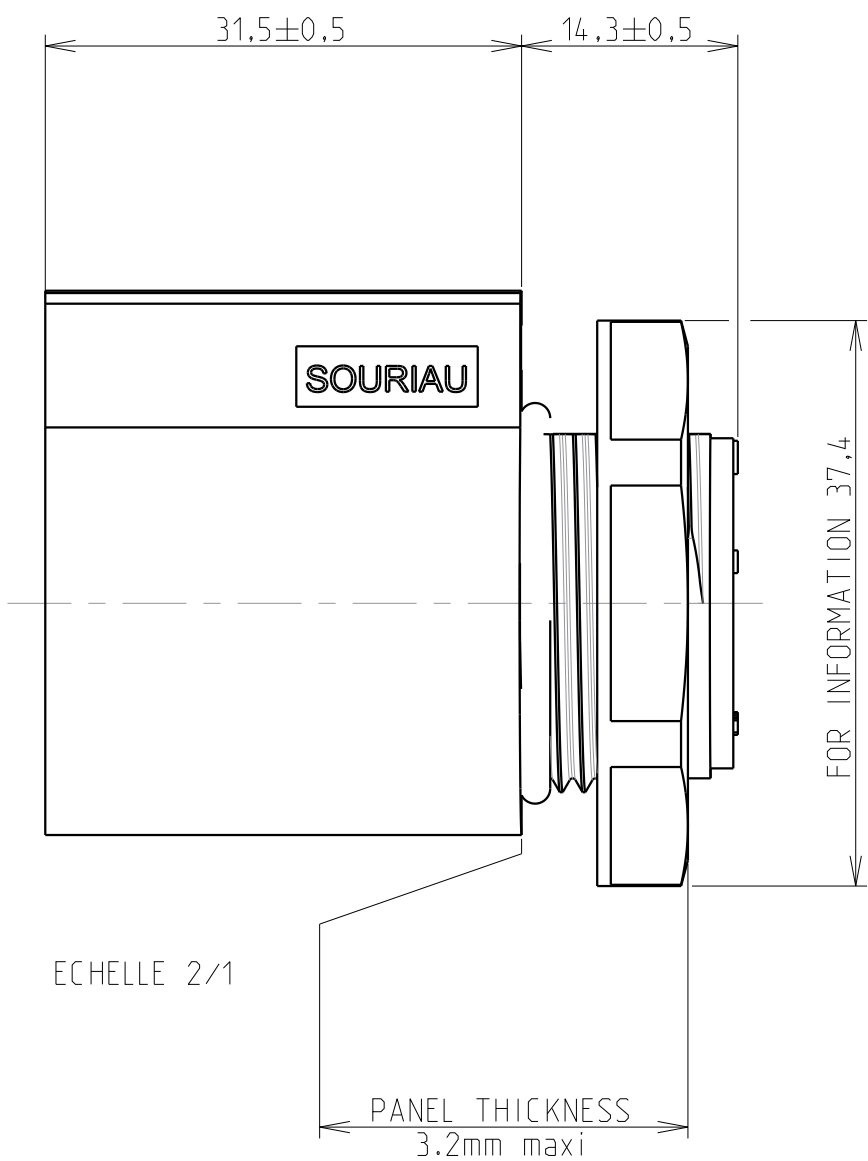
Contact us

Tel: +86-755-8981 8866 Fax: +86-755-8427 6832

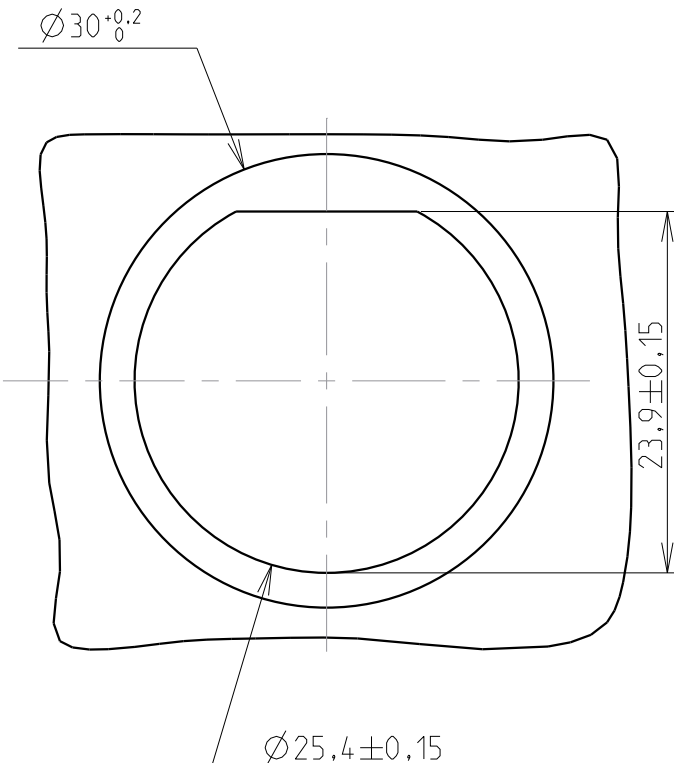
Email & Skype: info@chipsmall.com Web: www.chipsmall.com

Address: A1208, Overseas Decoration Building, #122 Zhenhua RD., Futian, Shenzhen, China

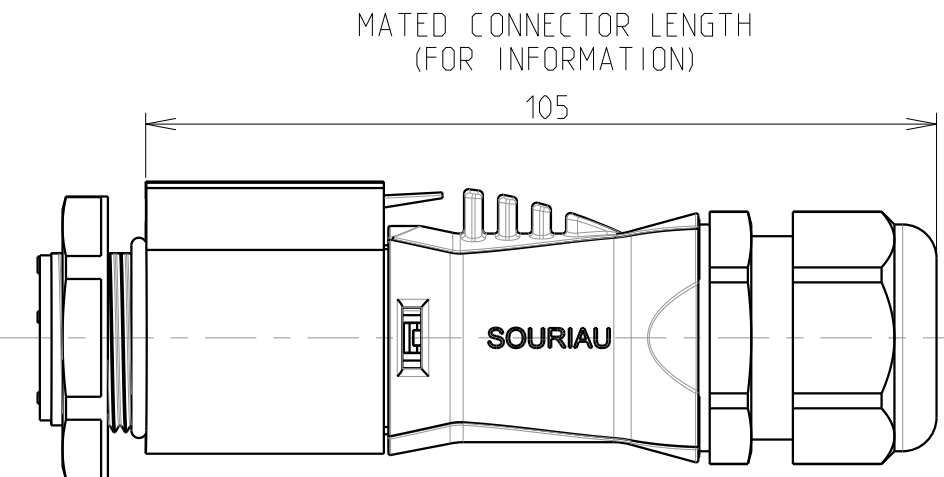
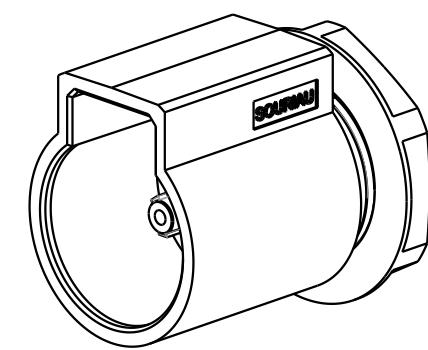




PANEL DIMENSION



DELIVERY CONDITIONS



SECTION A-A

SOURIAU shall not be liable for any non-conformity or damage due to a use of the Products which does not comply with the Specifications issued by either of the Parties or by a third party (professional recommendation, technical notice.)

NOTES

MATERIALS
SHELL : BLACK POLYAMID
NUT : BLACK POLYAMID
O'RING : NBR

PERFORMANCES CHARACTERISTICS
MECHANICAL

TEMPERATURE CLASS	IEC61984/UL1977	-40°C TO 105°C
DURABILITY	IEC61984	500 MATE / UNMATE CYCLES
SCOOP PROOF		
SEALING IN MATED CONDITIONS	IEC60529	IP68 1BAR DURING 1WEEK
	DIN40050	IP69K
OPEN FACE SEALED	IEC60529	WITH SEALED CONTACT REF. R*M25* CONTACTS
POLLUTION DEGREE	IEC61984	4
CORROSION SALT SPRAY		MIN 1000H EXPOSURE
FLAMMABILITY	UL94	INSULATING MATERIAL : VO LEVEL

ELECTRICAL

WITHSTANDING VOLTAGE		2200VAC DURING 1 MIN
GROUND POSITION		FIRST MATE LAST BREAK
POWER POSITION MARKED "L" AND "N"		
NOMINAL CURRENT	UL1977	16A WITH AWG14 WIRE / 13A WITH AWG16 WIRE
NOMINAL CURRENT	IEC61984	16A WITH 2.5MM² WIRE / 13A WITH 1.5MM² WIRE
NOMINAL VOLTAGE	UL1977	277V
NOMINAL VOLTAGE	IEC61984	250VAC 4KV 4 FOR CLASS II EQUIPMENT
	IEC61984	500VAC 6KV 4 FOR CLASS I EQUIPMENT
NOMINAL CURRENT AND VOLTAGE FOR CBC USE	UL1977	277V 13A WITH AWG14/16 WIRES FOR CBC USE
	IEC61984	250VAC 13A 4KV 4 FOR CBC USE
CONTROL POSITION MARKED "1" AND "2"		48V , 1A, FREQUENCY UP TO 100 Mhz

REGULATION

ROHS COMPLIANT

- COUNTERPART REFERENCE UTL PLUG
- DELIVERY CONDITIONS : CONNECTORS ARE DELIVERED AS PRE-ASSEMBLED KIT
- CONNECTOR ACCEPTS x5 TRIM TRIO CONTACTS #16, R*M* OR S*M* TYPES
- CONTACTS HAVE TO BE ORDERED SEPARATELY.
- UNIT IN MM
- WIRE INSULATOR MAX DIAMETER : Ø 3.9mm MAX
- FOR WIRING INSTRUCTION SEE BT330

MASS ± 5%

27.5 g

Country	Jurisdiction & Control List
FR	NOT LISTED

P/N : UTL7145P

A	21/12/16	First edition	24328PR
ISS	DATE	Latest modification - by: --	MOD N°
Designed by:	R.M.	Date: 1 21/12/16	CUSTOMER DRAWING
TITLE	MALE RECEPTACLE TYPE 7 SIZE 14 LAYOUT 5 CTS UTL CONNECTOR		
Scale	1/1	General Linear Tolerances: ± 0.2	NPRDS / PROJECT BE151304A
SOURIAU		WWW.SOURIAU.COM	This document is the property of SOURIAU It must not be reproduced or communicated without permission
FORMAT	A2	SOURIAU DRG N° UTL1-0079A-C	SHEET 1 / 1