



Chipsmall Limited consists of a professional team with an average of over 10 year of expertise in the distribution of electronic components. Based in Hongkong, we have already established firm and mutual-benefit business relationships with customers from,Europe,America and south Asia,supplying obsolete and hard-to-find components to meet their specific needs.

With the principle of “Quality Parts,Customers Priority,Honest Operation,and Considerate Service”,our business mainly focus on the distribution of electronic components. Line cards we deal with include Microchip,ALPS,ROHM,Xilinx,Pulse,ON,Everlight and Freescale. Main products comprise IC,Modules,Potentiometer,IC Socket,Relay,Connector.Our parts cover such applications as commercial,industrial, and automotives areas.

We are looking forward to setting up business relationship with you and hope to provide you with the best service and solution. Let us make a better world for our industry!



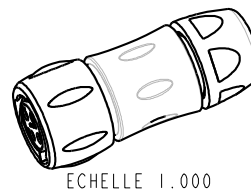
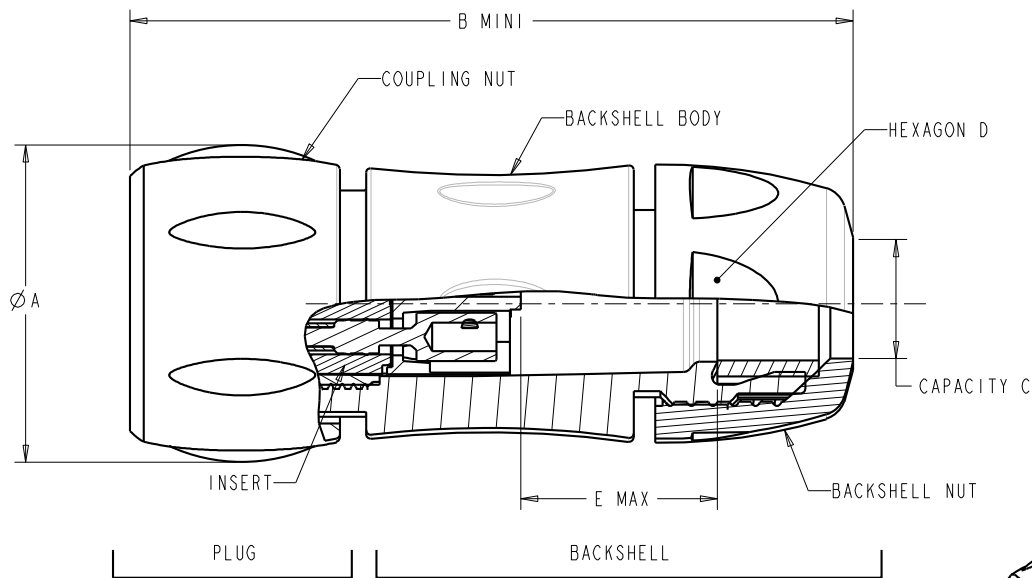
Contact us

Tel: +86-755-8981 8866 Fax: +86-755-8427 6832

Email & Skype: info@chipsmall.com Web: www.chipsmall.com

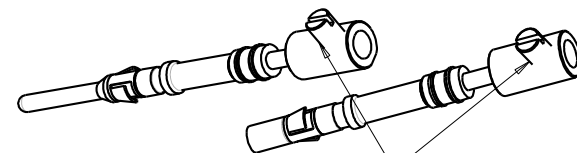
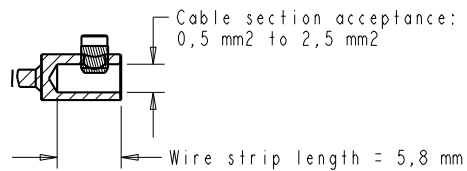
Address: A1208, Overseas Decoration Building, #122 Zhenhua RD., Futian, Shenzhen, China





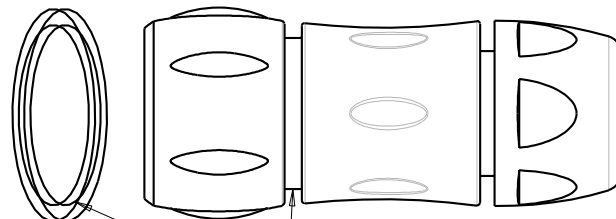
SHELL SIZE	LAYOUT	Ø A	B MINI	CAPACITY C		HEXAGON D	E MAX	
				STANDARD	REDUCING SEAL		FEMALE	MALE
12	4	29.70	66.70	5.00/12.00	3.00/9.00	24.00	22.8 MAX.	15.1 MAX.
14	7	34.60	71.50	7.00/14.00	5.00/12.00	26.00	26.7 MAX.	18.95 MAX.

DETAIL CONTACT



Torquing screw advised : 20 N.cm

OPTIONAL PART



COLOR RING
(See nota 2)

MATERIAL :

Coupling Nut: Polyamid UL94 V-0
Inset: Polyamid UL94 V0
Backshell body: Polyamid UL94 V-0
Backshell nut: Polyamid UL94 V-0
Shell : Polyamid UL94 V-0
Coupling spring : Stainless steel
O'seal : Nitril

PERFORMANCE CHARACTERISTICS :

Operating temperature: -40°C up to 105°C
Insulation resistance: 5000 MΩmin
Contact resistance : < 3 mΩ
Test potential: 2000 Vrms for #16 layout
Corrosion salt spray: 500 hours
Durability: 250 matings and unmatings
Sealing in mated conditions:
-IP68 1 bar during 1 week : immersion under 10 m of water.
(IEC 60529)
-IP69K : exposure to high pressure water of cleaning
equipement (DIN 40050)

NOTES :

- 1-Plug, backshell and the reducing seal are delivered as a kit
The backshell already includes the standard seal.
- 2-Colored ring to be order separately refer to customer drawing
C006-UTSI-A
- 3-Insert arrangements : refer to : C008-UTSI-A (Female insulator)

UTS6 JC XX X X SCR

Plug UTS6

Backshell

Shell size : 12/14

Insert arrangement (See nota 3)

P/S = Male/Female contact

SCR = Screw termination

CUSTOMER DRAWING

d	26/10/09	--	Torque screw advised modification	20772
ISS	DATE	Latest modification - by:	RAGINE M.	MOD N°
Designed by:	V. CHANTEAU	Date:	28/02/07	CUSTOMER DRAWING
TITLE	CABLE PLUG + BACKSHELL UTS CONNECTOR			
Scale	2.000	General linear Tolerances:	±0,2	NPRDS / PROJECT UTSI
FORMAT	A2	W W W . S O U R I A U . C O M	This document is the property of SOURIAU It must not be reproduced or distributed without the written authorization of SOURIAU	
SOURIAU		SOURIAU DRG N°		SHEET
A2		C016-UTSI-A		1 / 1

NOT FOR CONTROL