



Chipsmall Limited consists of a professional team with an average of over 10 year of expertise in the distribution of electronic components. Based in Hongkong, we have already established firm and mutual-benefit business relationships with customers from,Europe,America and south Asia,supplying obsolete and hard-to-find components to meet their specific needs.

With the principle of “Quality Parts,Customers Priority,Honest Operation,and Considerate Service”,our business mainly focus on the distribution of electronic components. Line cards we deal with include Microchip,ALPS,ROHM,Xilinx,Pulse,ON,Everlight and Freescale. Main products comprise IC,Modules,Potentiometer,IC Socket,Relay,Connector.Our parts cover such applications as commercial,industrial, and automotives areas.

We are looking forward to setting up business relationship with you and hope to provide you with the best service and solution. Let us make a better world for our industry!



Contact us

Tel: +86-755-8981 8866 Fax: +86-755-8427 6832

Email & Skype: info@chipsmall.com Web: www.chipsmall.com

Address: A1208, Overseas Decoration Building, #122 Zhenhua RD., Futian, Shenzhen, China



2009/02/11 01:54:52 CAROL, TRIBBLE

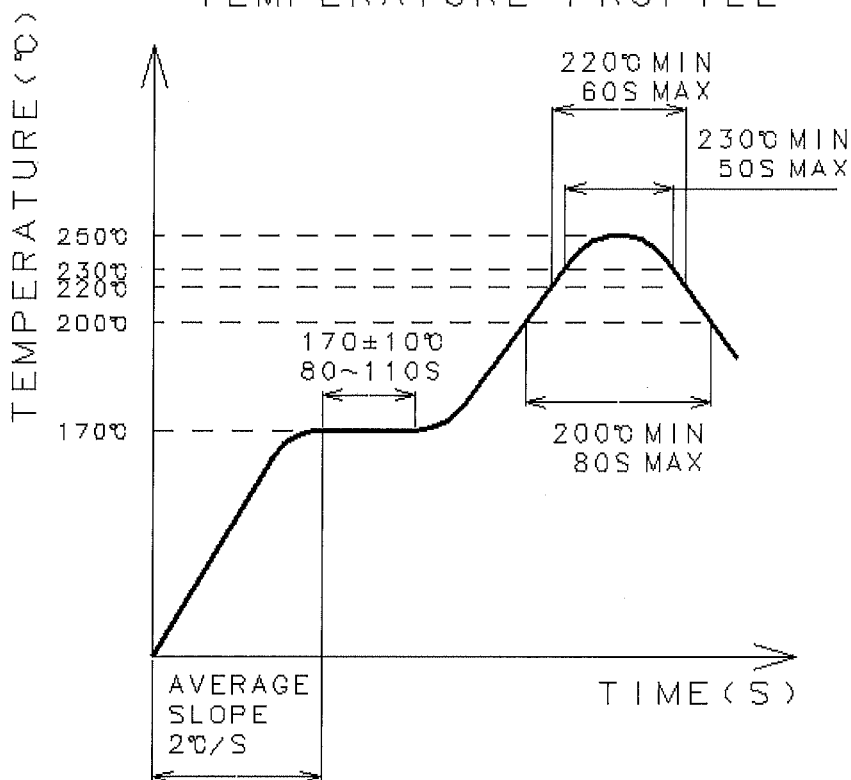
DRAWING FOR REFERENCE: This is subject to change without notice

TO

COUNT	DESCRIPTION OF REVISIONS	BY	CHKD	DATE	COUNT	DESCRIPTION OF REVISIONS	BY	CHKD	DATE
△	2	DIS-E-001569	H.K	N.M	07.06.19	△			
△					△				
APPLICABLE STANDARD									
OPERATING TEMPERATURE RANGE		-30°C TO 75°C			STORAGE TEMPERATURE RANGE		-40°C TO 85°C		
RATING	VOLTAGE	5V AC			CURRENT	1A			
SPECIFICATIONS									
ITEM		TEST METHOD			REQUIREMENTS			QT	AT
CONSTRUCTION									
GENERAL EXAMINATION		VISUALLY AND BY MEASURING INSTRUMENT.			ACCORDING TO DRAWING.			×	×
MARKING		CONFIRMED VISUALLY.						×	×
ELECTRIC CHARACTERISTICS									
CONTACT RESISTANCE		100 mA (DC OR 1000 Hz).						×	×
CONTACT RESISTANCE MILLIVOLT LEVEL METHOD.		20 mV MAX, 100 mA(DC OR 1000 Hz).			50 mΩ MAX.			×	—
INSULATION RESISTANCE		100 V DC			100 MΩ MIN.			×	×
VOLTAGE PROOF		100 V AC FOR 1min.			NO FLASHOVER OR BREAKDOWN			×	×
CAPASITANCE		MEASURE ADJACENT TWO CONTACTS AT 1000±10Hz AC VOLTAGE.			2 pF MAX			×	—
MECHANICAL CHARACTERISTICS									
INSERTION AND WITHDRAWAL FORCES		MEASURED BY APPLICABLE CONNECTOR.			INSERTION FORCE 35 N MAX. EXTRACTION FORCE 7 N MIN.			×	—
MECHANICAL OPERATION		5000 TIMES INSERTIONS AND EXTRACTIONS.			① CONTACT RESISTANCE: 70 mΩ MAX. ② EXTRACTION FORCE 4 N MIN. ③ NO DAMAGE, CRACK AND LOOSENESS, OF PARTS.			×	—
VIBRATION		FREQUENCY 10 TO 55 Hz, SINGLE AMPLITUDE 0.75 mm AT 2 h, FOR 3 DIRECTIONS.			① NO ELECTRICAL DISCONTINUITY OF 1 μs. ② NO DAMAGE, CRACK AND LOOSENESS, OF PARTS.			×	—
RANDOM VIBRATION		FREQUENCY 50 TO 2000 Hz, AT 15 min, FOR 3 DIRECTIONS.						×	—
SHOCK		490 m/s ² DIRECTIONS OF PULSE 11 ms AT 3TIMES FOR 6 DIRECTION. HALF SINE WAVE.						×	—
ENVIRONMENTAL CHARACTERISTICS									
THERMAL SHOCK		TEMPERATURE -55→ 20~35→ 85→ 20~35 °C TIME 30 → 2~3 → 30 → 2~3 min UNDER 10 CYCLES,			① CONTACT RESISTANCE: 70 mΩ MAX. ② NO DAMAGE, CRACK AND LOOSENESS, OF PARTS.			×	—
HUMIDITY LIFE		TEMPERATURE -10~65 °C, HUMIDITY 90 TO 98 %, UNDER 7 CYCLES (168 h)			① INSULATION RESISTANCE: 10 MΩ MIN.(AT DRY) ② NO DAMAGE, CRACK AND LOOSENESS, OF PARTS.			×	—
CORROSION SALT MIST		EXPOSED IN 5% SALT WATER SPRAY FOR 48 h. (JIS C 5402)			① CONTACT RESISTANCE: 70 mΩ MAX. ② NO HEAVY CORROSION.			×	—
SOLDERABILITY		SOLDERED AT TEMP.245°C FOR IN IMMERSION,DURATION,2~3 S.			SOLDER SHALL COVER A MINIMUM OF 95% OF THE SURFACE BEING IMMERSED.			×	—
REMARKS				DRAWN	DESIGNED	CHECKED	APPROVED	RELEASED	
				M.SHIMOYAMA 06.07.05	M.SHIMOYAMA 06.07.05	K.ICHIKAWA 06.07.06	A.SUZUKI 06.07.06		
Unless otherwise specified, refer to USB2.0 EIA364.									
Note QT:Qualification Test AT:Assurance Test ×:Applicable Test									
HRS HIROSE ELECTRIC CO., LTD.				SPECIFICATION SHEET			PART NO. UX60SD-MB-5S55 △		
CODE NO.(OLD)		DRAWING NO. ELC4-125719-00			CODE NO. CL240-0018-1-00		1/2		

SPECIFICATIONS

RECOMENDED REFLOW TEMPERATURE PROFILE



REMARKS	DRAWN	DESIGNED	CHECKED	APPROVED	RELEASED
	M.SHIMOYAMA 06.07.05	M.SHIMOYAMA 06.07.05	K.ICHIKAWA 06.07.06	A.SUZUKI 06.07.06	
Unless otherwise specified, refer to USB2.0 EIA364.					

Note QT:Qualification Test AT:Assurance Test X:Applicable Test

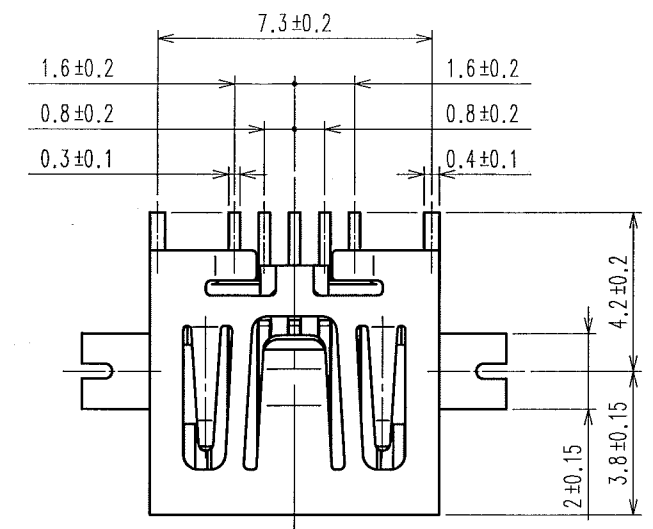
HIROSE ELECTRIC CO., LTD.	SPECIFICATION SHEET	PART NO.
		UX60SD-MB-5S55

CODE NO.(OLD)	DRAWING NO.	CODE NO.	<table border="1" style="width: 100px; height: 100px;"> <tr> <td style="text-align: center;">2</td> </tr> <tr> <td style="text-align: center;">2</td> </tr> </table>	2	2
2					
2					
	ELC4-125719-00	CL240-0018-1-00			

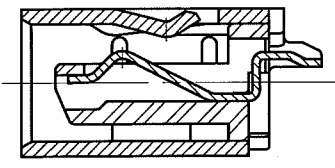
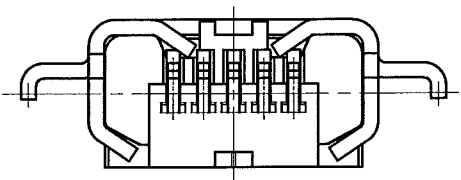
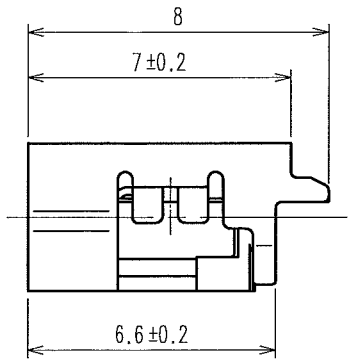
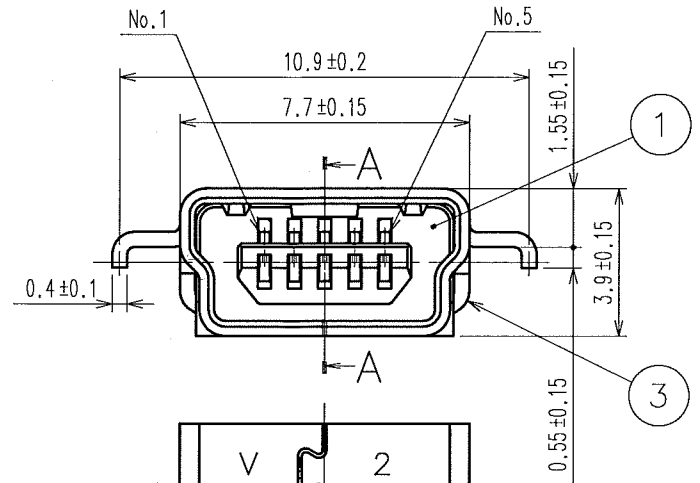
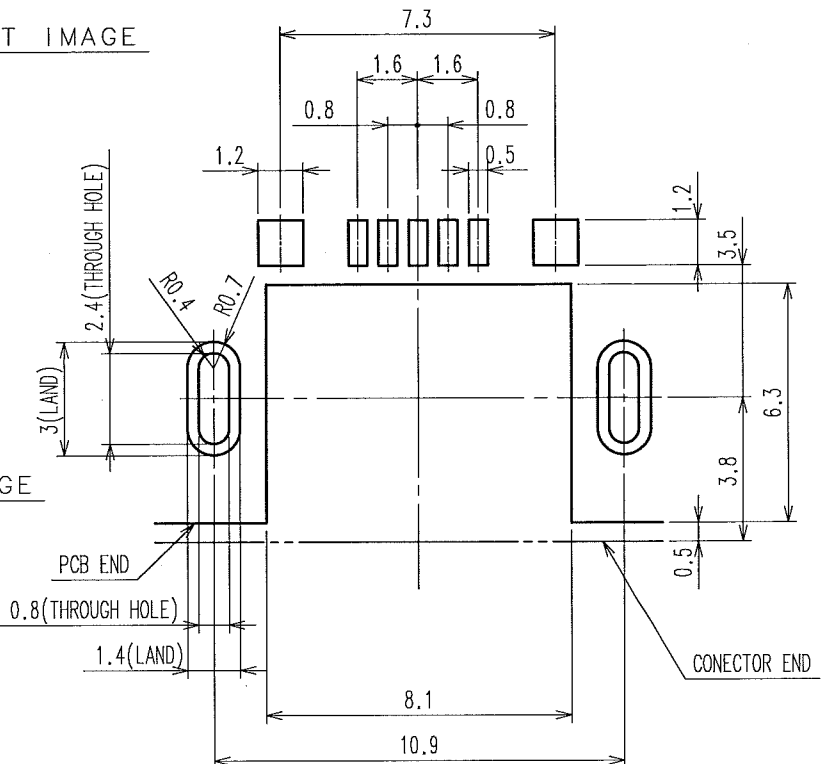
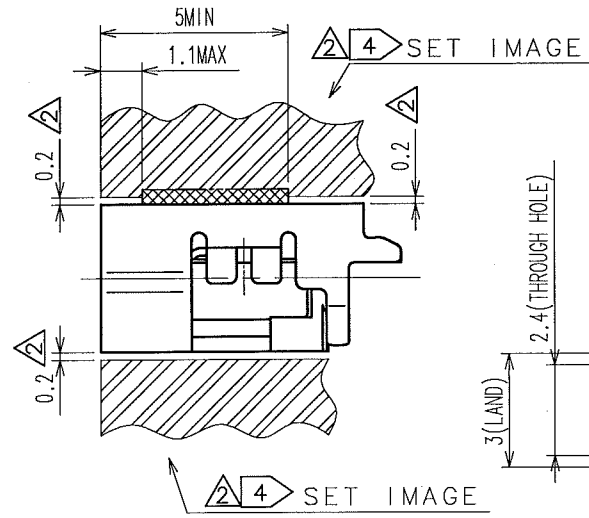
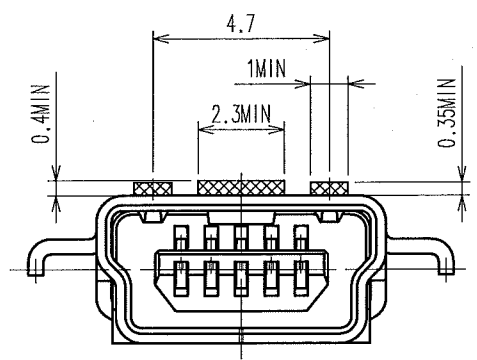
2009/02/11 01:54:53 CAROL. TRIBBLE

DRAWING FOR REFERENCE: This is subject to change without notice

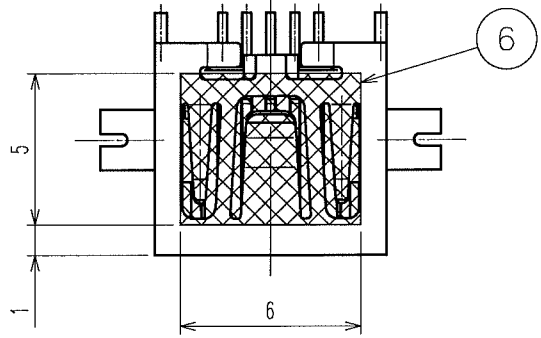
COUNT	DESCRIPTION OF REVISIONS	BY	CHKD	DATE	COUNT	DESCRIPTION OF REVISIONS	BY	CHKD	DATE
1	DIS-E-001569	H.K	N.M	07.06.19					
6	DIS-E-001871	H.K	N.M	07.11.20					



RECOMMENDED CLEARANCE AREA RECOMMENDED PCB PATTERN

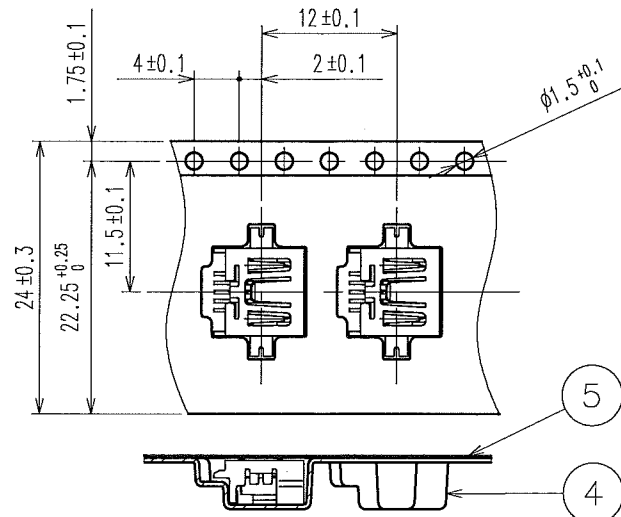


PICK & PLACE TAPE POSITION (4:1)



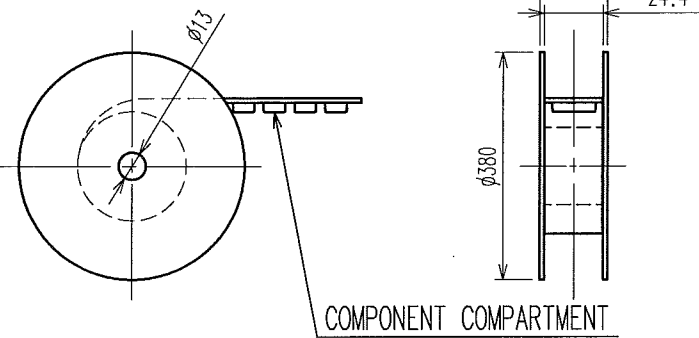
NOTE 1. INTERFACE DIMENSIONS CONFORM TO USB2.0 STANDARDS.
 2. PER REL: 1000 PIECES.
 3. CONTACT & METAL SHELL IS CO-PLANARITY TO BE 0.1mm MAX.
 4. THE SET CONSTRUCTION MUST BE HOLD THE CONNECTOR'S STOP AND BOTTOM FOR PREVENTING WRENCHING FORCE.

UNREELING DIRECTION →



DRAWING FOR PACKING (FREE)

UNREELING DIRECTION →



2	PHOSPHOR BRONZE	UNDER PLATING: NICKEL 2μm MIN CONTACT AREA: GOLD 0.75μm MIN LEAD AREA: GOLD 0.03μm MIN	6	PICK & PLACE TAPE	
1	POLYAMIDE	UL94V-0 (BLACK)	5	PS	
			4	PS	
			3	PHOSPHOR BRONZE	UNDER PLATING: NICKEL 1μm MIN MOUNTING AREA: TIN 1μm MIN
NO.	MATERIAL	FINISH, REMARKS	NO.	MATERIAL	FINISH, REMARKS

CODÉ NO. (OLD)	DRAWN	DESIGNED	CHECKED	APPROVED	RELEASED
	M.SHIMOYAMA	M.SHIMOYAMA	K.ICHIKAWA	A.SUZUKI	
	06.07.06	06.07.06	06.07.06	06.07.06	

SCALE	DRAWING NO.	PART NO.
5 : 1	EDC3-125719-00	UX60SD-MB-5S55
UNITS	HIROSE ELECTRIC CO., LTD	CODE NO.
mm		CL240-0018-1-00

TO