



Chipsmall Limited consists of a professional team with an average of over 10 year of expertise in the distribution of electronic components. Based in Hongkong, we have already established firm and mutual-benefit business relationships with customers from,Europe,America and south Asia,supplying obsolete and hard-to-find components to meet their specific needs.

With the principle of “Quality Parts,Customers Priority,Honest Operation,and Considerate Service”,our business mainly focus on the distribution of electronic components. Line cards we deal with include Microchip,ALPS,ROHM,Xilinx,Pulse,ON,Everlight and Freescale. Main products comprise IC,Modules,Potentiometer,IC Socket,Relay,Connector.Our parts cover such applications as commercial,industrial, and automotives areas.

We are looking forward to setting up business relationship with you and hope to provide you with the best service and solution. Let us make a better world for our industry!



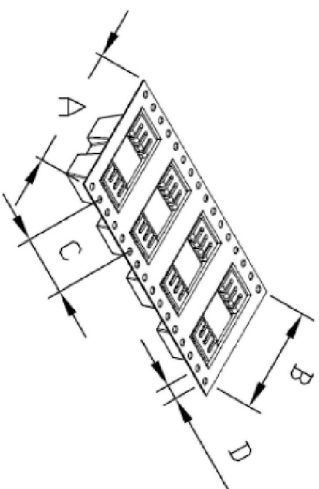
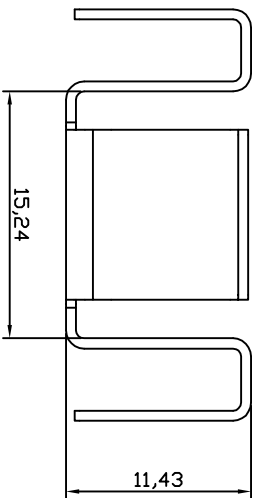
## Contact us

Tel: +86-755-8981 8866 Fax: +86-755-8427 6832

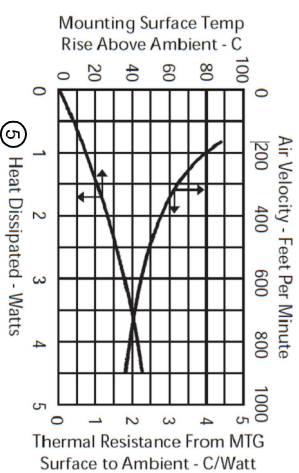
Email & Skype: info@chipsmall.com Web: www.chipsmall.com

Address: A1208, Overseas Decoration Building, #122 Zhenhua RD., Futian, Shenzhen, China

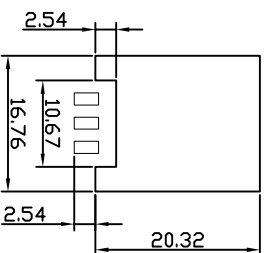
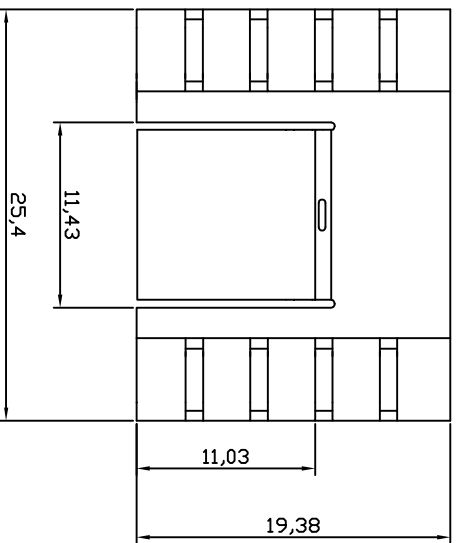




Tape Reel Dimension	
A	44,0
B	40,4
C	36,0 (2)
D	2,00 (2)



Material: C1100, 0.6mm thick  
 Finished: Tin plated  
 (1) Thermal resistance: 11K/W



(3) (4) Recommended PCB solder Layout

PART NO.	PACKING	REMARK
V-1102-SMD/A-L	BULK	
V-1102-SMD/A	TAPE & REEL	150PC=1REEL

**RoHS compliant**  
 Unit: mm

Scale	Free	(5)	Add thermal resistance graph	01.03.2016	Amy		Date	Name	Customer-No.
TOLERANCE		(4)	Update PCB layout	30.04.2014	Amy	Drawn	12.01.2011	Rate	
		(3)	Add PCB layout	23.04.2014	Amy	Approved	01.03.2016	Amy	ASSMANN WSW-No. V-1102-SMD/A-L V-1102-SMD/A
UNIT	±0.30	(2)	Update the tape reel	11.04.2014	Amy				ASSMANN WSW-No. V-1102-SMD/A-L V-1102-SMD/A
DIM	TOL	(1)	Update	12.03.2013	Amy				Drawing-No. ASS 1004 HS
		(0)	Drawn	12.01.2011	Rate				Replace
Angle	TOL		Modification		Name				rev05

**ASSMANN**  
 WSW components

1 2 3 4 5 6 7

KT1394