



Chipsmall Limited consists of a professional team with an average of over 10 year of expertise in the distribution of electronic components. Based in Hongkong, we have already established firm and mutual-benefit business relationships with customers from,Europe,America and south Asia,supplying obsolete and hard-to-find components to meet their specific needs.

With the principle of “Quality Parts,Customers Priority,Honest Operation,and Considerate Service”,our business mainly focus on the distribution of electronic components. Line cards we deal with include Microchip,ALPS,ROHM,Xilinx,Pulse,ON,Everlight and Freescale. Main products comprise IC,Modules,Potentiometer,IC Socket,Relay,Connector.Our parts cover such applications as commercial,industrial, and automotives areas.

We are looking forward to setting up business relationship with you and hope to provide you with the best service and solution. Let us make a better world for our industry!



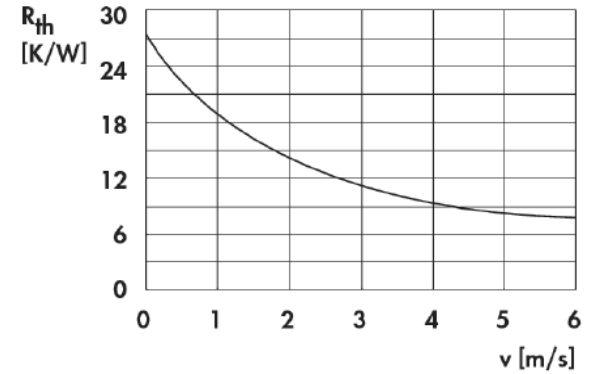
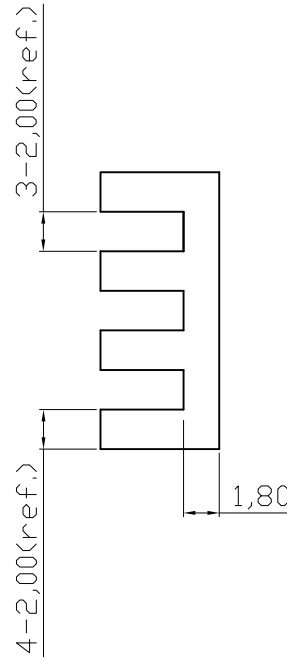
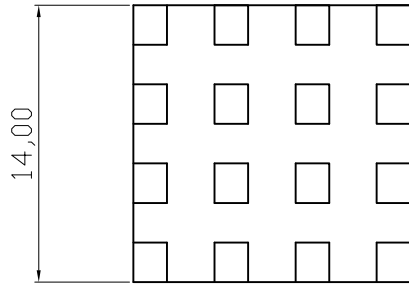
## Contact us

Tel: +86-755-8981 8866 Fax: +86-755-8427 6832

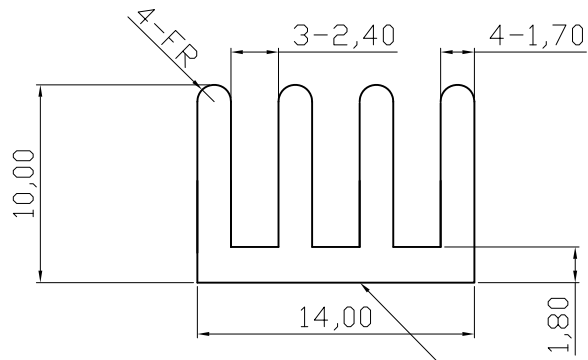
Email & Skype: info@chipsmall.com Web: www.chipsmall.com

Address: A1208, Overseas Decoration Building, #122 Zhenhua RD., Futian, Shenzhen, China





④ airflow thermal resistance



Flatness is: 0.15mm ③

Material : AL 6063-T5  
Finished: Black Anodized

**RoHS compliant**  
UNIT: mm

Scale	Free						Date	Name	Customer-No.
TOLERANCE						Drawn	11.08.2009	Dean	
L<150	±0.15								
150≤L≤610	±0.25	④	Add airflow thermal resistance	28.03.2013	Amy	Approved	28.03.2013	Amy	ASSMANN WSW-No.
610<L	±0.38	③	Tolerance Add.	21.06.2011	Jason				V2020B
DIM	TOL	②	Modify drawing layout	10.03.2010	Alex			Drawing-No.	
X.°	±X°	①	Drawn	11.08.2009	Dean			ASS 0878 HS	rev04
X.X°	±X°							Replace	Sheet
Angle	TOL	Id.	Modification	Date	Name				

**RoHS compliant**  
UNIT: mm