



Chipsmall Limited consists of a professional team with an average of over 10 year of expertise in the distribution of electronic components. Based in Hongkong, we have already established firm and mutual-benefit business relationships with customers from,Europe,America and south Asia,supplying obsolete and hard-to-find components to meet their specific needs.

With the principle of “Quality Parts,Customers Priority,Honest Operation,and Considerate Service”,our business mainly focus on the distribution of electronic components. Line cards we deal with include Microchip,ALPS,ROHM,Xilinx,Pulse,ON,Everlight and Freescale. Main products comprise IC,Modules,Potentiometer,IC Socket,Relay,Connector.Our parts cover such applications as commercial,industrial, and automotives areas.

We are looking forward to setting up business relationship with you and hope to provide you with the best service and solution. Let us make a better world for our industry!



## Contact us

Tel: +86-755-8981 8866 Fax: +86-755-8427 6832

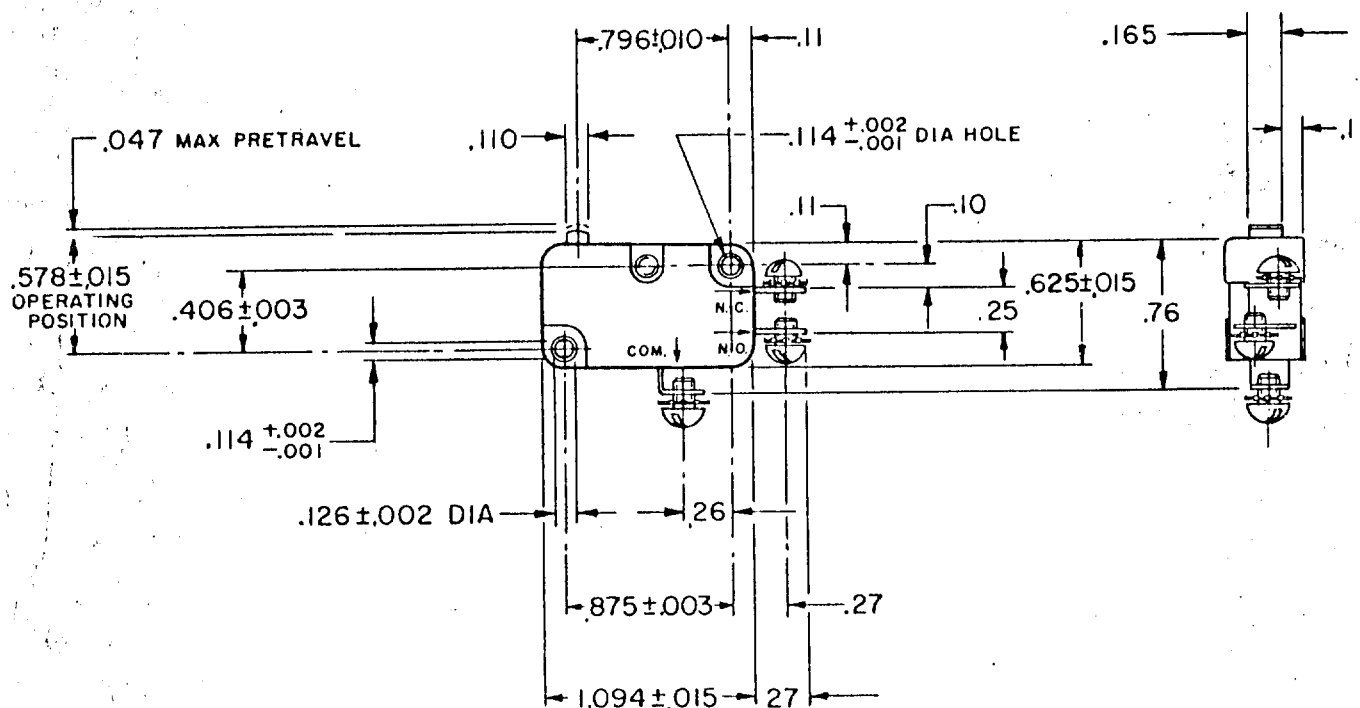
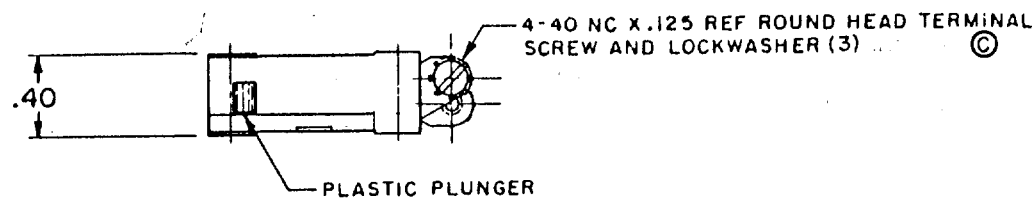
Email & Skype: [info@chipsmall.com](mailto:info@chipsmall.com) Web: [www.chipsmall.com](http://www.chipsmall.com)

Address: A1208, Overseas Decoration Building, #122 Zhenhua RD., Futian, Shenzhen, China



**MICRO SWITCH**FREEPORT, ILLINOIS, U.S.A.  
A DIVISION OF HONEYWELL

FED. MFG. CODE 91929

**SWITCH-BASIC****V 3-1****CK-A0100****5**

THIS DRAWING COVERS A PROPRIETARY ITEM AND IS THE PROPERTY OF MICRO SWITCH, A DIVISION OF HONEYWELL. THIS DRAWING IS NOT TO BE COPIED OR USED WITHOUT THE APPROVAL OF MICRO SWITCH.

**CHARACTERISTICS**

OPERATING FORCE — — — 6-14 OZ

RELEASE FORCE — — — 4 OZ MIN

DIFFERENTIAL TRAVEL — — .006 — .016

OVERTRAVEL — — — .040 MIN

FREE POSITION — — — .625 MAX

RELEASE TRAVEL — — — .007 MIN

**ELECTRICAL DATA**CONTACT ARRANGEMENT  
S P D T

L83

15.1A 1/2HP 125 OR 250 VAC

1/2A 125 VDC, 1/4A 250 VDC

5A 125 VAC "L"

**SCALE FULL**

DO NOT SCALE PRINT

UNLESS OTHERWISE NOTED

DIMENSIONS ARE IN INCHES

**TOLERANCES ARE:**

ONE PLACE (.0) ±.030

TWO PLACE (.00) ±.015

THREE PLACE (.000) ±.005

ANGLES ±

WEIGHT .017 LB

REPLACES

RELEASE NO.

DRAWING NUMBER

CHECK

VISIONS

CO20189

M B F

MAY 65

CO21688

B F

OCT 66

CO24941

B S

DEC 68

CO26075

A B S

AUG 69

CO

31509

D A W

JAN 73

CO

32395

GLH

AUG 73

CO

56987

SMA

OCT 85

CO74634

R D R

MAY 93

CHECK

GCH

M B F

6 MAY 65

DRAWN

FC-50378