



Chipsmall Limited consists of a professional team with an average of over 10 year of expertise in the distribution of electronic components. Based in Hongkong, we have already established firm and mutual-benefit business relationships with customers from,Europe,America and south Asia,supplying obsolete and hard-to-find components to meet their specific needs.

With the principle of “Quality Parts,Customers Priority,Honest Operation,and Considerate Service”,our business mainly focus on the distribution of electronic components. Line cards we deal with include Microchip,ALPS,ROHM,Xilinx,Pulse,ON,Everlight and Freescale. Main products comprise IC,Modules,Potentiometer,IC Socket,Relay,Connector.Our parts cover such applications as commercial,industrial, and automotives areas.

We are looking forward to setting up business relationship with you and hope to provide you with the best service and solution. Let us make a better world for our industry!



## Contact us

Tel: +86-755-8981 8866 Fax: +86-755-8427 6832

Email & Skype: [info@chipsmall.com](mailto:info@chipsmall.com) Web: [www.chipsmall.com](http://www.chipsmall.com)

Address: A1208, Overseas Decoration Building, #122 Zhenhua RD., Futian, Shenzhen, China



**MICRO SWITCH**FREEPORT, ILLINOIS, U.S.A.  
A DIVISION OF HONEYWELL

FED. MFG. CODE 91929

**SWITCH-BASIC**

CATALOG LISTING

**V3-23****CK-A2300**

5

**V3-23****M**DRAWING  
NUMBERISSUE  
**23**

REPLACES

RELEASE NO.

CHECK

REVISIONS

A

C020189

P. E. R.

25 MAY 65

B

C021900

D. W. C.

10 JAN 67

C

C024941

M. B. S.

3 DEC 68

D

C026075

M. B. S.

26 AUG 69

E

C031509

R. E. R.

22 JAN 73

F

C0-32395

K. S. W.

24 FEB 76

G

C036987

S. M. A.

1 OCT 85

H

C069053

J. A. S.

8 FEB 92

J

C074634

K. D. R.

5 MAY 93

CHECK

65

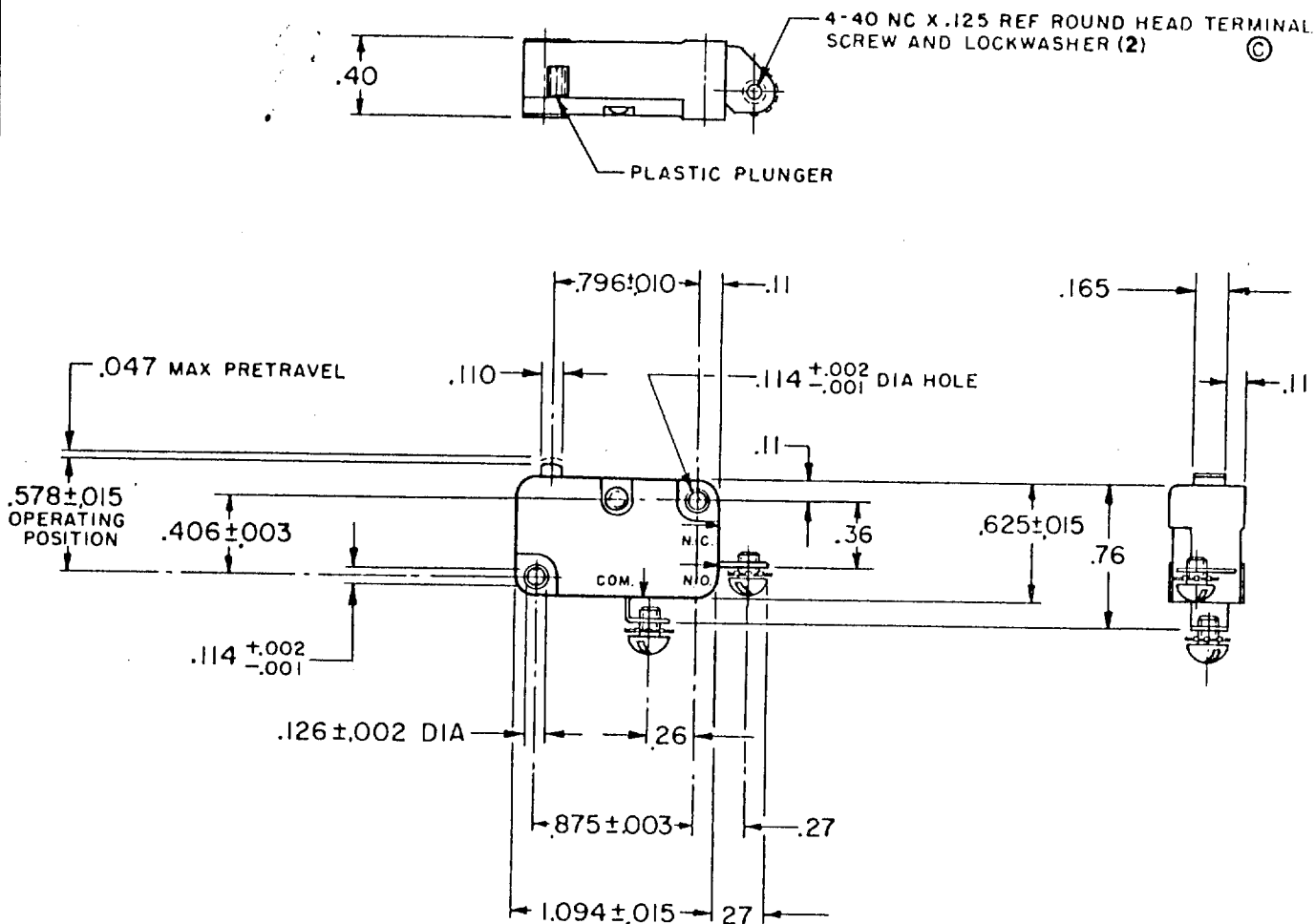
MAY

25

R. E. R.

DRAWN

FC-30378



THIS DRAWING COVERS A PROPRIETARY ITEM AND IS THE PROPERTY OF MICRO SWITCH, A DIVISION OF HONEYWELL. THIS DRAWING IS NOT TO BE COPIED OR USED WITHOUT THE APPROVAL OF MICRO SWITCH.

**CHARACTERISTICS**

OPERATING FORCE — — — — — 6-14 OZ

RELEASE FORCE — — — — — 4 OZ MIN

RELEASE TRAVEL — — — — — .007 MIN

DIFFERENTIAL TRAVEL — — — — — .006-.016

OVERTRAVEL — — — — — .040 MIN

FREE POSITION — — — — — .625 MAX

**ELECTRICAL DATA**CONTACT ARRANGEMENT  
S P N O15.1A 1/2HP 125 OR 250 VAC  
1/2A 125 VDC, 1/4A 250 VDC  
5A 125 VAC "L"

RJ ©

**SCALE FULL**

DO NOT SCALE PRINT

UNLESS OTHERWISE  
NOTED

DIMENSIONS ARE IN INCHES

**TOLERANCES ARE:**ONE PLACE (.0) ±.030  
TWO PLACE (.00) ±.015  
THREE PLACE (.000) ±.005  
ANGLES

WEIGHT .016 LB