



Chipsmall Limited consists of a professional team with an average of over 10 year of expertise in the distribution of electronic components. Based in Hongkong, we have already established firm and mutual-benefit business relationships with customers from,Europe,America and south Asia,supplying obsolete and hard-to-find components to meet their specific needs.

With the principle of “Quality Parts,Customers Priority,Honest Operation,and Considerate Service”,our business mainly focus on the distribution of electronic components. Line cards we deal with include Microchip,ALPS,ROHM,Xilinx,Pulse,ON,Everlight and Freescale. Main products comprise IC,Modules,Potentiometer,IC Socket,Relay,Connector.Our parts cover such applications as commercial,industrial, and automotives areas.

We are looking forward to setting up business relationship with you and hope to provide you with the best service and solution. Let us make a better world for our industry!



## Contact us

Tel: +86-755-8981 8866 Fax: +86-755-8427 6832

Email & Skype: info@chipsmall.com Web: www.chipsmall.com

Address: A1208, Overseas Decoration Building, #122 Zhenhua RD., Futian, Shenzhen, China



**MICRO SWITCH**  
a Honeywell Division

FED. MFG. CODE 91 929

**SWITCH - BASIC**

CATALOG LISTING

**V3L-2905**

**CQ-X1636**

REPLACES X101188-V3L

RELEASE NO. PR-22425

CATALOG LISTING

**V3L-2905**  
PAGE 1 OF 1

**M**

ISSUE  
**1**

CHECK

CHECK

REVISIONS

CHECK

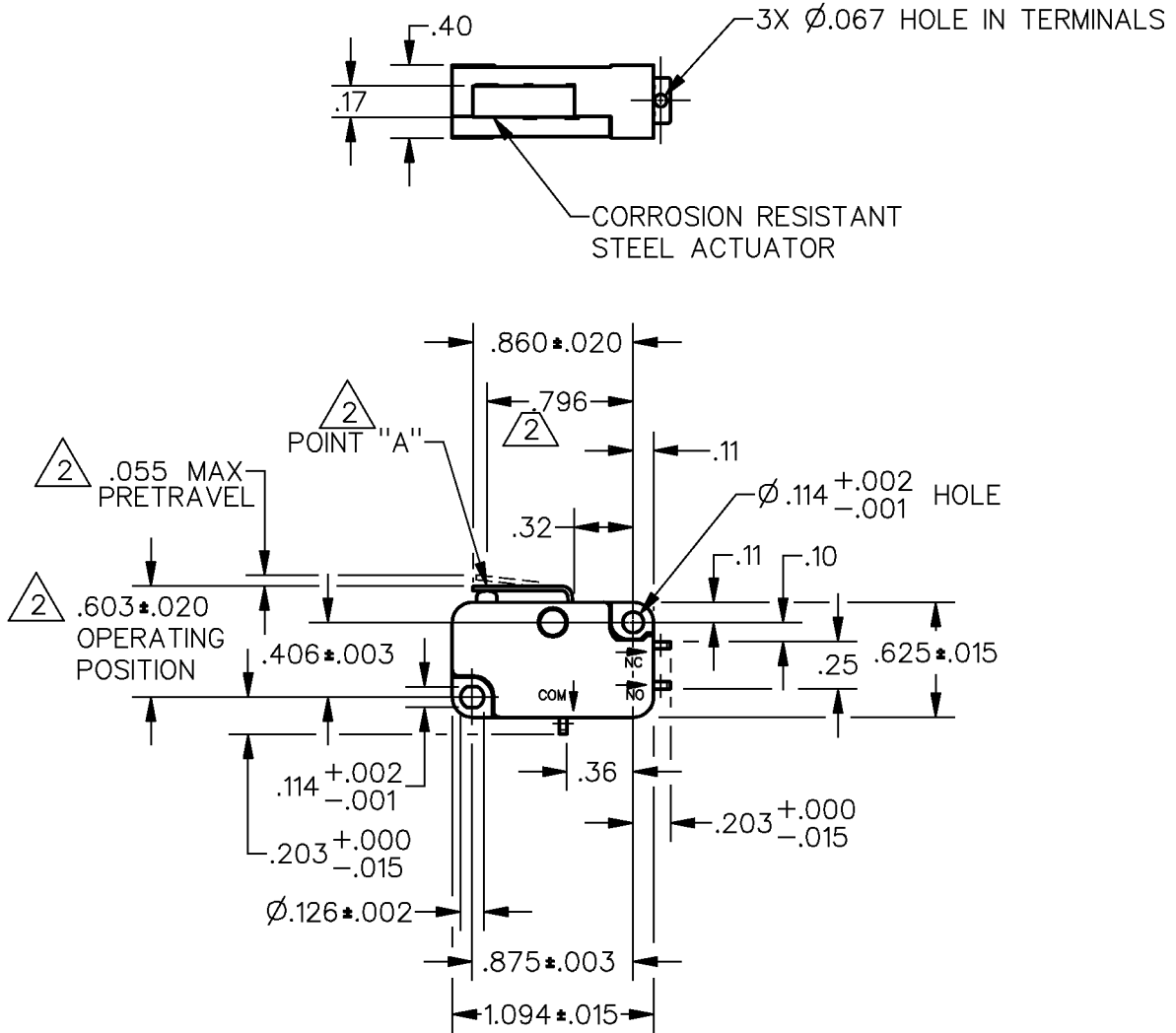
CHECK

CHECK

CHECK

CHECK

CHECK



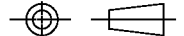
**NOTES**

- 1 - TERMINALS ARE SILVER PLATED
- ② CHARACTERISTICS MEASURED AT POINT "A"
- 3 - MAXIMUM MECHANICAL DEAD BREAK OF .0031 CAN BE EXPECTED WITH THIS SWITCH CONSTRUCTION

ANSI Y14.5M-1982 APPLIES

THIS DRAWING COVERS A PROPRIETARY ITEM AND IS THE PROPERTY OF MICRO SWITCH, A DIVISION OF HONEYWELL. THIS DRAWING IS NOT TO BE COPIED OR USED WITHOUT THE APPROVAL OF MICRO SWITCH.

THIRD ANGLE PROJECTION



CHARACTERISTICS	ELECTRICAL DATA	SCALE FULL	DO NOT SCALE PRINT
OPERATING FORCE --- 271 GRAMS MAX	CONTACT ARRANGEMENT S P D T	<b>UNLESS OTHERWISE SPECIFIED TOLERANCES ARE</b>	
RELEASE FORCE --- 24 GRAMS MIN	25A, 277 VAC 1HP, 125 VAC 2HP, 250 VAC	ONE PLACE (.0)	± .030
DIFFERENTIAL TRAVEL --- .012 MAX		TWO PLACE (.00)	± .015
OVERTRAVEL --- .032 MIN		THREE PLACE (.000)	± .005
RELEASE TRAVEL --- .007 MIN		ANGLES	±
		WEIGHT	



DDM/CAD  
DRAWN

DCS 15 NOV 96

15 NOV 96