



Chipsmall Limited consists of a professional team with an average of over 10 year of expertise in the distribution of electronic components. Based in Hongkong, we have already established firm and mutual-benefit business relationships with customers from,Europe,America and south Asia,supplying obsolete and hard-to-find components to meet their specific needs.

With the principle of “Quality Parts,Customers Priority,Honest Operation,and Considerate Service”,our business mainly focus on the distribution of electronic components. Line cards we deal with include Microchip,ALPS,ROHM,Xilinx,Pulse,ON,Everlight and Freescale. Main products comprise IC,Modules,Potentiometer,IC Socket,Relay,Connector.Our parts cover such applications as commercial,industrial, and automotives areas.

We are looking forward to setting up business relationship with you and hope to provide you with the best service and solution. Let us make a better world for our industry!



## Contact us

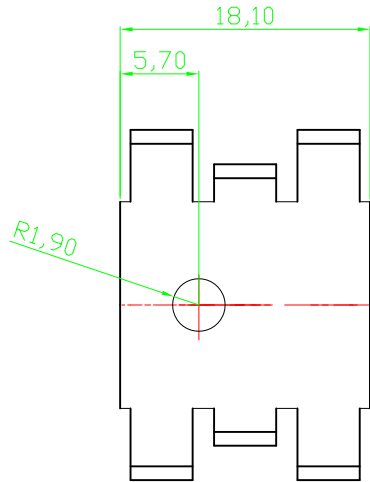
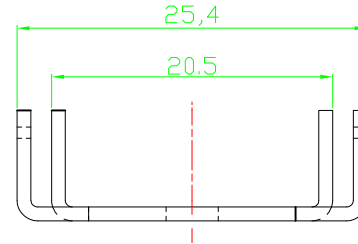
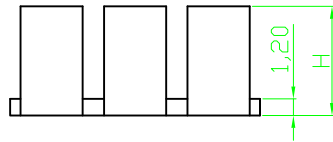
Tel: +86-755-8981 8866 Fax: +86-755-8427 6832

Email & Skype: info@chipsmall.com Web: www.chipsmall.com

Address: A1208, Overseas Decoration Building, #122 Zhenhua RD., Futian, Shenzhen, China




RoHS compliant



Notes  
Material:AL99.5-1mm

Option	Dimension H	Version	Thermal resistance
V5234B-T	7,9mm	Black anodized	25
V5235B-T	12,7mm	Black anodized	21

Scale	1:1					Date	Name	Customer-No.	
TOLERANCE						Drawn	Schulz	ASSMANN WSW-No. <b>V 5234B-T</b> <b>V 5235B-T</b>	
X.	±X					Approved	Plate		
X.X	±X								
X.XX	±X	③	Modify P/N	09.10.2010	Dean				
DIM	TOL							Drawing-No.	
X.°	±X°	②	Changed dimension	20.07.2010	Rale			ASS 0475B HS	rev03
X.X°	±X°	①	Drawn	12.10.2009	Schulz				Replace
Angle	TOL	Id.	Modification	Date	Name				