



Chipsmall Limited consists of a professional team with an average of over 10 year of expertise in the distribution of electronic components. Based in Hongkong, we have already established firm and mutual-benefit business relationships with customers from,Europe,America and south Asia,supplying obsolete and hard-to-find components to meet their specific needs.

With the principle of “Quality Parts,Customers Priority,Honest Operation,and Considerate Service”,our business mainly focus on the distribution of electronic components. Line cards we deal with include Microchip,ALPS,ROHM,Xilinx,Pulse,ON,Everlight and Freescale. Main products comprise IC,Modules,Potentiometer,IC Socket,Relay,Connector.Our parts cover such applications as commercial,industrial, and automotives areas.

We are looking forward to setting up business relationship with you and hope to provide you with the best service and solution. Let us make a better world for our industry!



Contact us

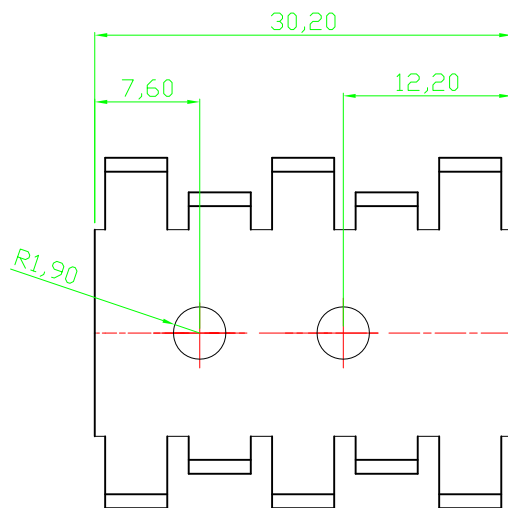
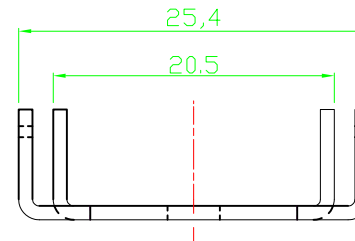
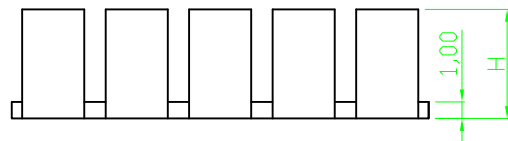
Tel: +86-755-8981 8866 Fax: +86-755-8427 6832

Email & Skype: info@chipsmall.com Web: www.chipsmall.com

Address: A1208, Overseas Decoration Building, #122 Zhenhua RD., Futian, Shenzhen, China




RoHS compliant



Notes
Material:AL99.5-1mm

Option	Dimension H	Version	Thermal resistance
V5236B-T	7,9mm	Black anodized	18
V5237B-T	12,7mm	Black anodized	15

Scale	1:1	Date	12.10.2009	Name	Schulz	Customer-No.			
TOLERANCE		Drawn		Plate		ASSMANN WSW-No. V5236B-T V5237B-T			
X.	±X	④	Modify P/N	09.10.2010	Dean		Approved	09.10.2010	
X.X	±X	③	Update	10.09.2010	Schulz				
DIM	TOL	②	Changed dimension	20.07.2010	Rale				
X.°	±X°	①	Drawn	12.10.2009	Schulz		Drawing-No.	ASS 0475A HS	rev04
X.X°	±X°	Angle	TOL	Id.	Modification		Date	Name	Replace

1

2

3

4

5

6

7