



Chipsmall Limited consists of a professional team with an average of over 10 year of expertise in the distribution of electronic components. Based in Hongkong, we have already established firm and mutual-benefit business relationships with customers from,Europe,America and south Asia,supplying obsolete and hard-to-find components to meet their specific needs.

With the principle of “Quality Parts,Customers Priority,Honest Operation,and Considerate Service”,our business mainly focus on the distribution of electronic components. Line cards we deal with include Microchip,ALPS,ROHM,Xilinx,Pulse,ON,Everlight and Freescale. Main products comprise IC,Modules,Potentiometer,IC Socket,Relay,Connector.Our parts cover such applications as commercial,industrial, and automotives areas.

We are looking forward to setting up business relationship with you and hope to provide you with the best service and solution. Let us make a better world for our industry!



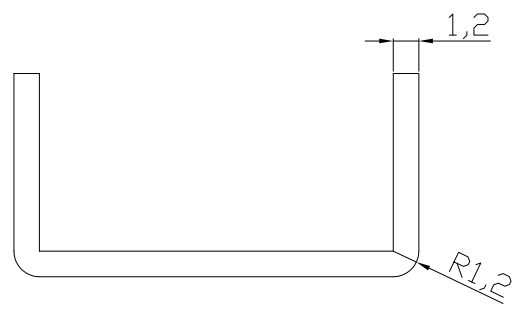
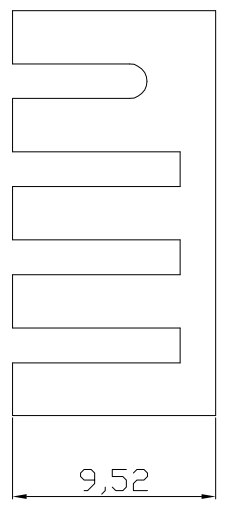
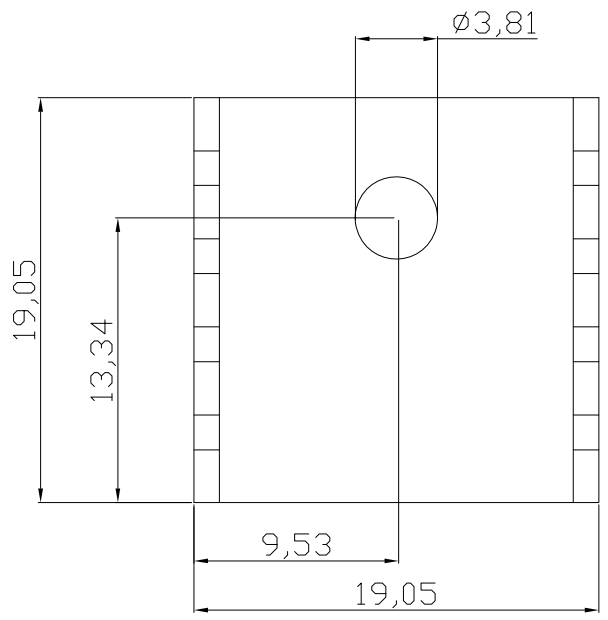
Contact us

Tel: +86-755-8981 8866 Fax: +86-755-8427 6832

Email & Skype: info@chipsmall.com Web: www.chipsmall.com

Address: A1208, Overseas Decoration Building, #122 Zhenhua RD., Futian, Shenzhen, China





Notes
 Material : AL1050 T=1.2mm

Option	Version	Thermal resistance
V7235-T	Black anodized	24

RoHS compliant
 Unit: mm

Scale	Free					Date	Name	Customer-No.
TOLERANCE						Drawn	08.03.2002	Hellwig
UNIT	±0.2					Approved	23.09.2013	Amy
		③	Change production plant	23.09.2013	Amy			
		②	Update	14.03.2012	Schulz			
		①	Drawn	12.10.2009	Schulz			
DIM	TOL							
X.°	±X°							
X.X°	±X°							
Angle	TOL	Id.	Modification	Date	Name			

ASSMANN WSW-No.		V7235-T	
Drawing-No.		ASS 0450 HS	
Replace		rev03	
		Sheet	



	1	2	3	4	5	6	7	
A								A
B								B
C								C
D								D
E								E
F								F
G								G
H								H
	1	2	3	4	5	6	7	