

Chipsmall Limited consists of a professional team with an average of over 10 year of expertise in the distribution of electronic components. Based in Hongkong, we have already established firm and mutual-benefit business relationships with customers from,Europe,America and south Asia,supplying obsolete and hard-to-find components to meet their specific needs.

With the principle of “Quality Parts,Customers Priority,Honest Operation,and Considerate Service”,our business mainly focus on the distribution of electronic components. Line cards we deal with include Microchip,ALPS,ROHM,Xilinx,Pulse,ON,Everlight and Freescale. Main products comprise IC,Modules,Potentiometer,IC Socket,Relay,Connector.Our parts cover such applications as commercial,industrial, and automotives areas.

We are looking forward to setting up business relationship with you and hope to provide you with the best service and solution. Let us make a better world for our industry!



## Contact us

Tel: +86-755-8981 8866 Fax: +86-755-8427 6832

Email & Skype: info@chipsmall.com Web: www.chipsmall.com

Address: A1208, Overseas Decoration Building, #122 Zhenhua RD., Futian, Shenzhen, China

1

2

3

4

5

6

7

A

A

B

B

C

C

D

D

E

E

F

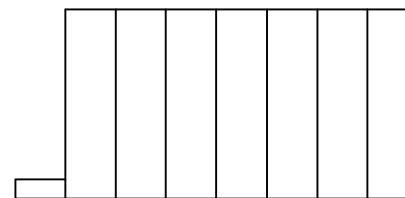
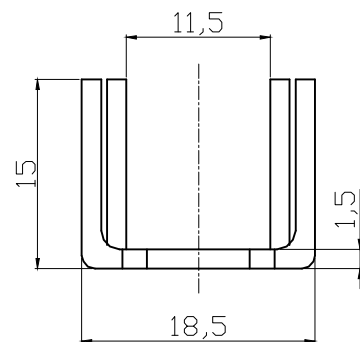
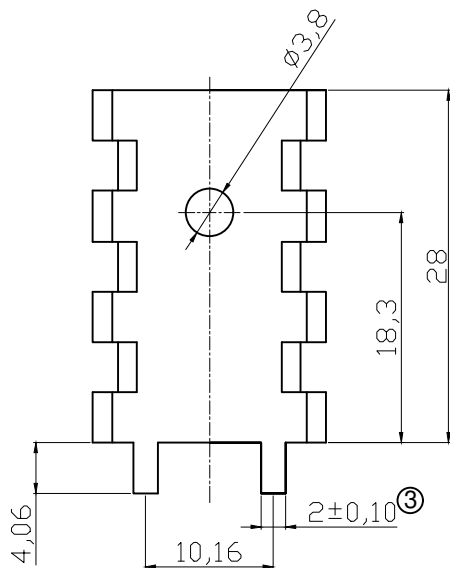
F

G

G

H

H



MATERIAL:  
AL 1050 T=1.5mm

P/N	FINISHED:
SN	Tinned plated
E1	BLACK ANODIZED

**RoHS compliant**  
Unit: mm

Scale	Free					Date	Name
⑤ TOLERANCE		⑤	Update	07.06.2013	Amy	Drawn	22.04.2004 Hellwig
Less 10	±0.15	④	Update plating Type (matt tin plating)	19.06.2012	Lucas	Approved	07.06.2013 Amy
10~30	±0.20	③	Add tolerance	19.08.2011	Jason		
31~50	±0.25	②	Update.	28.06.2010	Dean		
51~100	±0.30	①	Drawn	22.04.2004	Hellwig		
DIM	Tol						
Angle	±1°	Id.	Modification	Date	Name		

Customer-No.

ASSMANN WSW-No. **V7238X**

Drawing-No. **ASS 0561 HS** rev05

Replace Sheet

1

2

3

4

5

6

7