



Chipsmall Limited consists of a professional team with an average of over 10 year of expertise in the distribution of electronic components. Based in Hongkong, we have already established firm and mutual-benefit business relationships with customers from,Europe,America and south Asia,supplying obsolete and hard-to-find components to meet their specific needs.

With the principle of "Quality Parts,Customers Priority,Honest Operation,and Considerate Service",our business mainly focus on the distribution of electronic components. Line cards we deal with include Microchip,ALPS,ROHM,Xilinx,Pulse,ON,Everlight and Freescale. Main products comprise IC,Modules,Potentiometer,IC Socket,Relay,Connector.Our parts cover such applications as commercial,industrial, and automotives areas.

We are looking forward to setting up business relationship with you and hope to provide you with the best service and solution. Let us make a better world for our industry!



Contact us

Tel: +86-755-8981 8866 Fax: +86-755-8427 6832

Email & Skype: info@chipsmall.com Web: www.chipsmall.com

Address: A1208, Overseas Decoration Building, #122 Zhenhua RD., Futian, Shenzhen, China



1

2

3

4

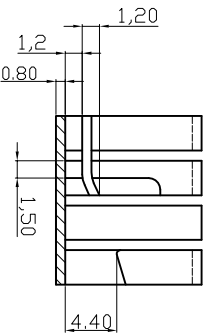
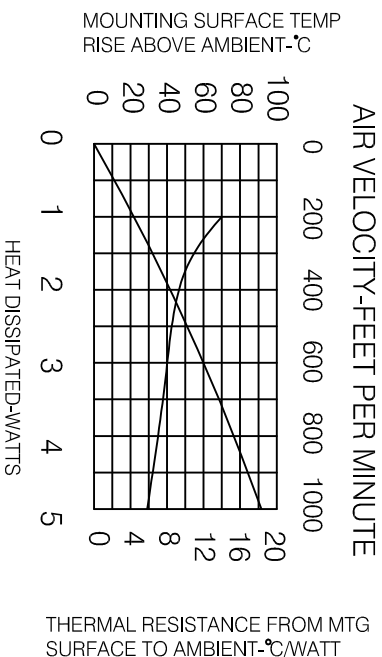
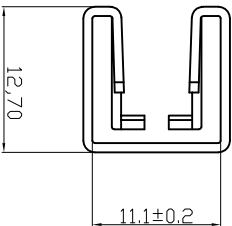
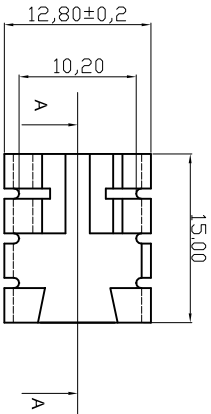
5

6

7

A

④



RoHS compliant

Unit: mm

Scale	Free	Customer-No.	
TOLERANCE		ASSMANN WSW-No.	V/8508G
UNIT	±0,25	Drawing-No.	ASS 0564 HS
		Replace	rev04
DIM	TOL		Sheet
Angle	TOL		

Id.	Modification	Date	Name
④	Update to new drawing	08.07.2016	Amy
③	Modify drawing layout	10.03.2010	Alex
②	Update	11.08.2009	Dean
①	Drawn	17.08.2004	Hellwig

Date	Name
Drawn	Hellwig
Approved	Amy



Notes
 Material: AL 5052 T=0,8±0,1 MM
 Finished: Black Anodize

1

2

3

4

5

6

7

H

G

F

E

D

C

B

A

H

G

F

E

D

C

B

A