



Chipsmall Limited consists of a professional team with an average of over 10 year of expertise in the distribution of electronic components. Based in Hongkong, we have already established firm and mutual-benefit business relationships with customers from,Europe,America and south Asia,supplying obsolete and hard-to-find components to meet their specific needs.

With the principle of “Quality Parts,Customers Priority,Honest Operation,and Considerate Service”,our business mainly focus on the distribution of electronic components. Line cards we deal with include Microchip,ALPS,ROHM,Xilinx,Pulse,ON,Everlight and Freescale. Main products comprise IC,Modules,Potentiometer,IC Socket,Relay,Connector.Our parts cover such applications as commercial,industrial, and automotives areas.

We are looking forward to setting up business relationship with you and hope to provide you with the best service and solution. Let us make a better world for our industry!



## Contact us

Tel: +86-755-8981 8866 Fax: +86-755-8427 6832

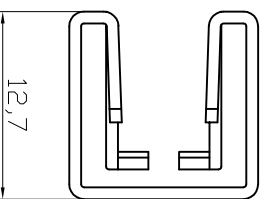
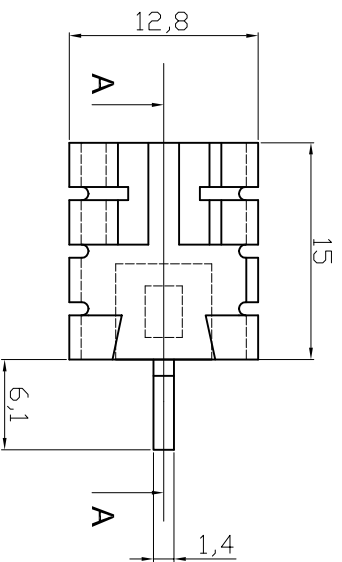
Email & Skype: info@chipsmall.com Web: www.chipsmall.com

Address: A1208, Overseas Decoration Building, #122 Zhenhua RD., Futian, Shenzhen, China



1      2      3      4      5      6      7

A



A

B

B

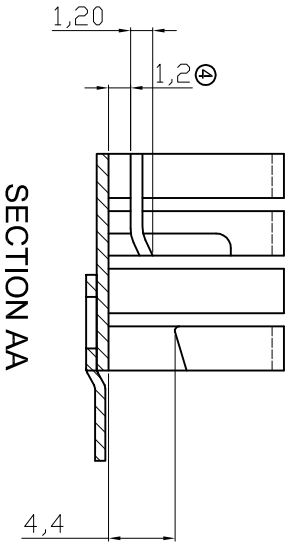
C

C

D

D

E



E

F

F

**RoHS compliant**  
Unit: mm

**Notes**  
Material: AL 5052 T=0,8±0,1 MM  
Finished: Black Anodize

G

G

H

H

Scale	FREE							
TOLERANCE								
UNIT	±0,25							
		④	Update to new drawing		08.07.2016		Amy	
		③	Modify drawing layout		10.03.2010		Alex	
DIM	TOL	②	Update		11.08.2009		Dean	
X.°	±X°	①	Drawn		02.07.2003		Hellwig	
X.X°	±X°	Id.		Modification				
Angle	TOL							

Customer-No.	Date	Name	Customer-No.	Drawing-No.
	02.07.2003	Hellwig	ASSMANN WSW-No.	V8508H
	08.07.2016	Amy		

				ASSMANN			
				components			
		Replace	ASS 0543 HS	rev04			
				Sheet			

1      2      3      4      5      6      7



H