



Chipsmall Limited consists of a professional team with an average of over 10 year of expertise in the distribution of electronic components. Based in Hongkong, we have already established firm and mutual-benefit business relationships with customers from,Europe,America and south Asia,supplying obsolete and hard-to-find components to meet their specific needs.

With the principle of “Quality Parts,Customers Priority,Honest Operation,and Considerate Service”,our business mainly focus on the distribution of electronic components. Line cards we deal with include Microchip,ALPS,ROHM,Xilinx,Pulse,ON,Everlight and Freescale. Main products comprise IC,Modules,Potentiometer,IC Socket,Relay,Connector.Our parts cover such applications as commercial,industrial, and automotives areas.

We are looking forward to setting up business relationship with you and hope to provide you with the best service and solution. Let us make a better world for our industry!



Contact us

Tel: +86-755-8981 8866 Fax: +86-755-8427 6832

Email & Skype: info@chipsmall.com Web: www.chipsmall.com

Address: A1208, Overseas Decoration Building, #122 Zhenhua RD., Futian, Shenzhen, China



Feature

- Low Power Consumption
- High Intensity
- I.C. compatible

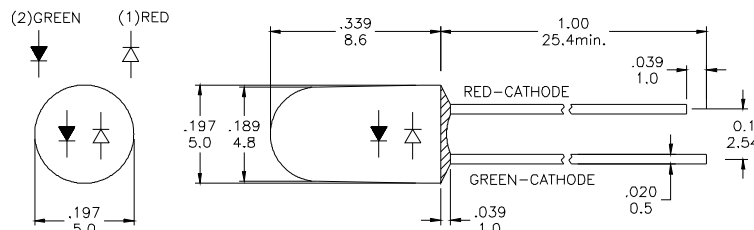
Applications

- Commercial Outdoor Sign Board
- Front Panel Indicator

Description

- The (1)Red and (2)Green Chips are Matched For uniform Light Output
- Diffusion Lens

Package Dimension



* Tolerance: $\frac{0.01}{0.25}$ Unit: $\frac{\text{inch}}{\text{mm}}$

Absolute Maximum Ratings at Ta=25°C

| Symbol | Parameter | Max. | Unit |
|---|--|---------------|---------|
| PD | Power Dissipation | 100 | mW |
| VR | Reverse Voltage | 5 | V |
| IAF | Average Forward Current | 30 | mA |
| IPF | Peak Forward Current (Duty=0.1 , 1kHz) | 100 | mA |
| — | Derating Linear Form 25°C | 0.4 | mA / °C |
| Topr | Operating Temperature Range | - 40 to + 80 | °C |
| Tstg | Storage Temperature Range | - 40 to + 100 | °C |
| Lead Soldering Temperature [1.6mm (0.063inch) From Body] 260°C For 5 Seconds. | | | |

Electrical / Optical Characteristics and Curves at Ta=25°C

| Symbol | Parameter | Test Condition | Min. | Typ. | Max. | Unit |
|--------|---------------------|----------------|------|------|------|------|
| VF | Forward Voltage | IF = 20 mA | R | 2.0 | 2.4 | V |
| | | | G | 2.0 | 2.4 | |
| IR | Reverse Current | VR = 5 V | | | 50 | μA |
| IV | Luminous Intensity | IF = 20 mA | R | 100 | | mcd. |
| | | | G | 80 | | |
| λd | Dominant Wavelength | IF = 20 mA | R | 640 | | nm |
| | | | G | 570 | | |

Specific binning requirements- please contact our home office