



Chipsmall Limited consists of a professional team with an average of over 10 year of expertise in the distribution of electronic components. Based in Hongkong, we have already established firm and mutual-benefit business relationships with customers from,Europe,America and south Asia,supplying obsolete and hard-to-find components to meet their specific needs.

With the principle of “Quality Parts,Customers Priority,Honest Operation,and Considerate Service”,our business mainly focus on the distribution of electronic components. Line cards we deal with include Microchip,ALPS,ROHM,Xilinx,Pulse,ON,Everlight and Freescale. Main products comprise IC,Modules,Potentiometer,IC Socket,Relay,Connector.Our parts cover such applications as commercial,industrial, and automotives areas.

We are looking forward to setting up business relationship with you and hope to provide you with the best service and solution. Let us make a better world for our industry!



Contact us

Tel: +86-755-8981 8866 Fax: +86-755-8427 6832

Email & Skype: info@chipsmall.com Web: www.chipsmall.com

Address: A1208, Overseas Decoration Building, #122 Zhenhua RD., Futian, Shenzhen, China



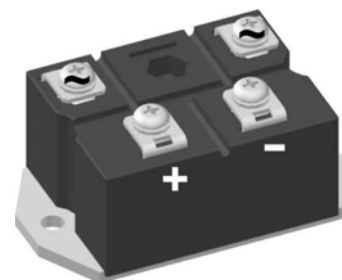
Standard Rectifier Module

1~ Rectifier	
V_{RRM}	= 1800 V
I_{DAV}	= 70 A
I_{FSM}	= 750 A

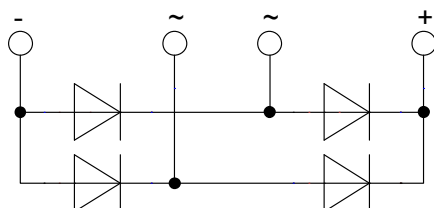
1~ Rectifier Bridge

Part number

VBO72-18NO7



 E72873



Features / Advantages:

- Package with DCB ceramic
- Improved temperature and power cycling
- Planar passivated chips
- Very low forward voltage drop
- Very low leakage current

Applications:

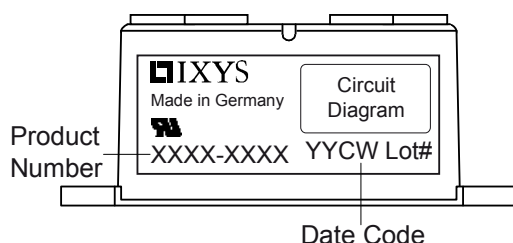
- Diode for main rectification
- For one phase bridge configurations
- Supplies for DC power equipment
- Input rectifiers for PWM inverter
- Battery DC power supplies
- Field supply for DC motors

Package: PWS-D

- Industry standard outline
- RoHS compliant
- Easy to mount with two screws
- Base plate: Copper internally DCB isolated
- Advanced power cycling

Rectifier				Ratings			
Symbol	Definition	Conditions		min.	typ.	max.	Unit
V_{RSM}	max. non-repetitive reverse blocking voltage	$T_{VJ} = 25^{\circ}\text{C}$				1900	V
V_{RRM}	max. repetitive reverse blocking voltage	$T_{VJ} = 25^{\circ}\text{C}$				1800	V
I_R	reverse current	$V_R = 1800\text{ V}$	$T_{VJ} = 25^{\circ}\text{C}$			100	μA
		$V_R = 1800\text{ V}$	$T_{VJ} = 150^{\circ}\text{C}$			1.5	mA
V_F	forward voltage drop	$I_F = 30\text{ A}$	$T_{VJ} = 25^{\circ}\text{C}$			1.08	V
		$I_F = 60\text{ A}$				1.22	V
		$I_F = 30\text{ A}$	$T_{VJ} = 125^{\circ}\text{C}$			0.99	V
		$I_F = 60\text{ A}$				1.17	V
I_{DAV}	bridge output current	$T_C = 110^{\circ}\text{C}$ rectangular $d = 0.5$	$T_{VJ} = 150^{\circ}\text{C}$			70	A
V_{FO}	threshold voltage	} for power loss calculation only		$T_{VJ} = 150^{\circ}\text{C}$		0.78	V
r_F	slope resistance					6	m Ω
R_{thJC}	thermal resistance junction to case					0.9	K/W
R_{thCH}	thermal resistance case to heatsink				0.4		K/W
P_{tot}	total power dissipation	$T_C = 25^{\circ}\text{C}$				135	W
I_{FSM}	max. forward surge current	$t = 10\text{ ms; (50 Hz), sine}$	$T_{VJ} = 45^{\circ}\text{C}$			750	A
		$t = 8,3\text{ ms; (60 Hz), sine}$	$V_R = 0\text{ V}$			810	A
		$t = 10\text{ ms; (50 Hz), sine}$	$T_{VJ} = 150^{\circ}\text{C}$			640	A
		$t = 8,3\text{ ms; (60 Hz), sine}$	$V_R = 0\text{ V}$			690	A
I^2t	value for fusing	$t = 10\text{ ms; (50 Hz), sine}$	$T_{VJ} = 45^{\circ}\text{C}$			2.82	kA ² s
		$t = 8,3\text{ ms; (60 Hz), sine}$	$V_R = 0\text{ V}$			2.73	kA ² s
		$t = 10\text{ ms; (50 Hz), sine}$	$T_{VJ} = 150^{\circ}\text{C}$			2.05	kA ² s
		$t = 8,3\text{ ms; (60 Hz), sine}$	$V_R = 0\text{ V}$			1.98	kA ² s
C_J	junction capacitance	$V_R = 400\text{ V; } f = 1\text{ MHz}$			27		pF

Package PWS-D			Ratings			
Symbol	Definition	Conditions	min.	typ.	max.	Unit
I_{RMS}	RMS current	per terminal			150	A
T_{stg}	storage temperature		-40		125	°C
T_{VJ}	virtual junction temperature		-40		150	°C
Weight				153		g
M_D	mounting torque		4.25		5.75	Nm
M_T	terminal torque		4.25		5.75	Nm
$d_{Spp/App}$	creepage distance on surface / striking distance through air	terminal to terminal	9.5			mm
$d_{Spb/Appb}$		terminal to backside	26.0			mm
V_{ISOL}	isolation voltage	t = 1 second	3000			V
		t = 1 minute	2500			V

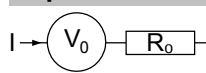


Ordering	Part Number	Marking on Product	Delivery Mode	Quantity	Code No.
Standard	VBO72-18NO7	VBO72-18NO7	Box	10	491586

Equivalent Circuits for Simulation

* on die level

$T_{VJ} = 150^\circ\text{C}$

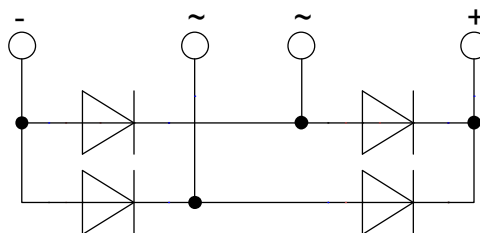
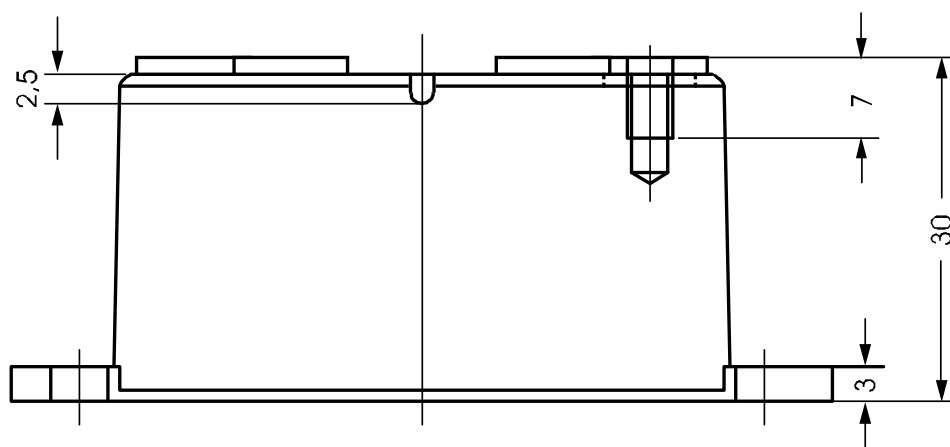


Rectifier

$V_{0\max}$	threshold voltage	0.78	V
$R_{0\max}$	slope resistance *	4.8	mΩ

Technical drawing of a rectangular metal plate with the following dimensions and features:

- Overall width: 72
- Overall height: 42
- Top edge features:
 - Left corner: 21,6
 - Left side: 5,3
 - Right side: 5,3
 - Right corner: 13,3
- Internal layout:
 - Top row: Three sections. The left and right sections contain circular features. The middle section contains a hexagonal feature.
 - Bottom row: Two sections. The left section contains a circular feature with a '+' symbol. The right section contains a circular feature with a '-' symbol.
- Dimensions and Spacing:
 - Top row sections: 20 (left), 18 (middle), 20 (right)
 - Top row section widths: 2,5 (left), 2,5 (right)
 - Bottom row section width: 10
 - Bottom row section widths: 23 (left), 48 (right)
- Other features:
 - Two circular features on the left and right sides.
 - Two circular features on the top and bottom edges.
 - Two circular features on the top and bottom edges.
 - Two circular features on the top and bottom edges.



Rectifier

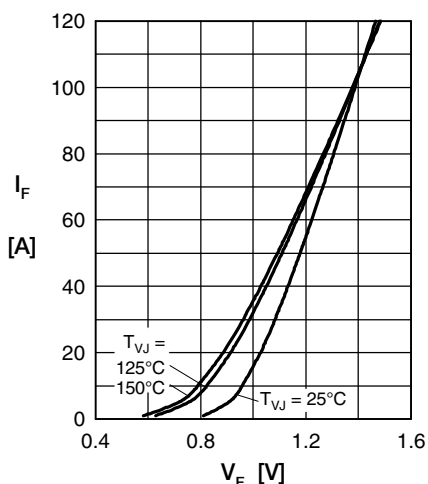


Fig. 1 Forward current versus voltage drop per diode

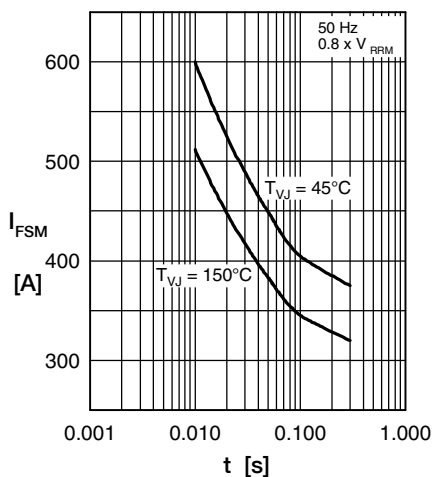


Fig. 2 Surge overload current

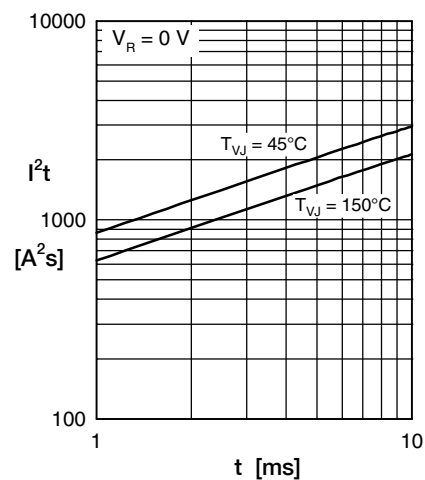


Fig. 3 I^2t versus time per diode

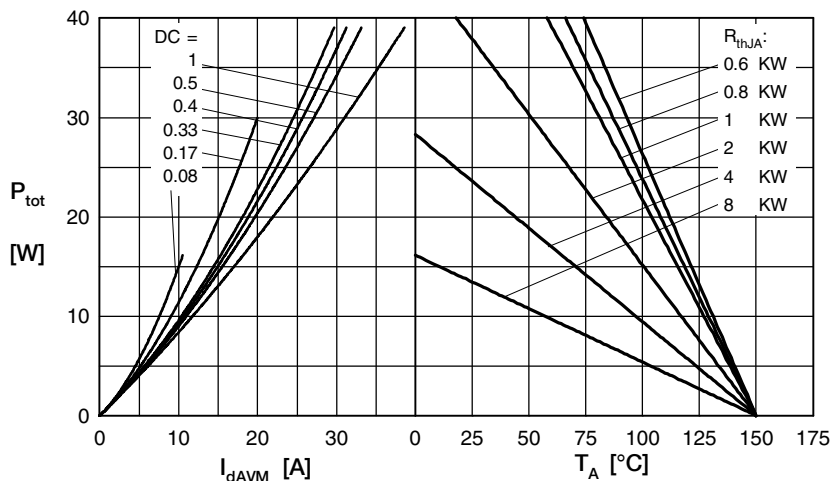


Fig. 4 Power dissipation vs. direct output current & ambient temperature

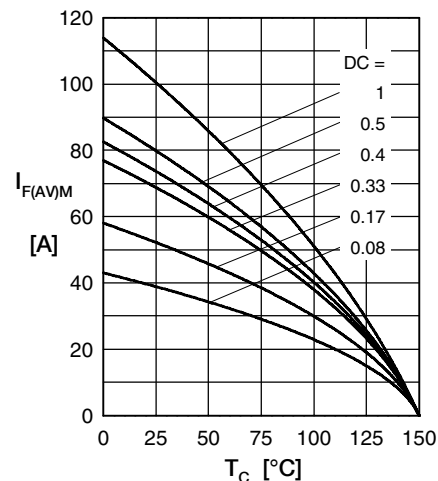


Fig. 5 Max. forward current vs. case temperature

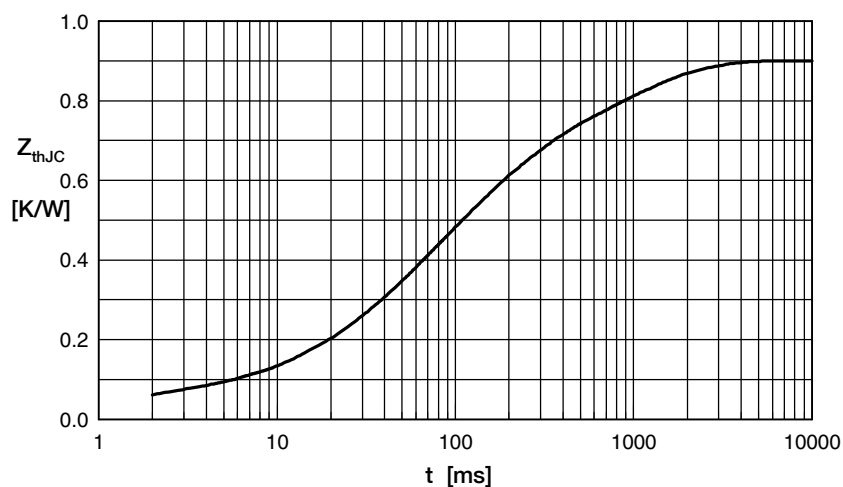


Fig. 6 Transient thermal impedance junction to case

Constants for Z_{thJC} calculation:

i	R_{th} (K/W)	t_i (s)
1	0.05	0.001
2	0.14	0.030
3	0.18	0.070
4	0.28	0.150
5	0.25	0.950