



Chipsmall Limited consists of a professional team with an average of over 10 year of expertise in the distribution of electronic components. Based in Hongkong, we have already established firm and mutual-benefit business relationships with customers from,Europe,America and south Asia,supplying obsolete and hard-to-find components to meet their specific needs.

With the principle of “Quality Parts,Customers Priority,Honest Operation,and Considerate Service”,our business mainly focus on the distribution of electronic components. Line cards we deal with include Microchip,ALPS,ROHM,Xilinx,Pulse,ON,Everlight and Freescale. Main products comprise IC,Modules,Potentiometer,IC Socket,Relay,Connector.Our parts cover such applications as commercial,industrial, and automotives areas.

We are looking forward to setting up business relationship with you and hope to provide you with the best service and solution. Let us make a better world for our industry!



Contact us

Tel: +86-755-8981 8866 Fax: +86-755-8427 6832

Email & Skype: info@chipsmall.com Web: www.chipsmall.com

Address: A1208, Overseas Decoration Building, #122 Zhenhua RD., Futian, Shenzhen, China

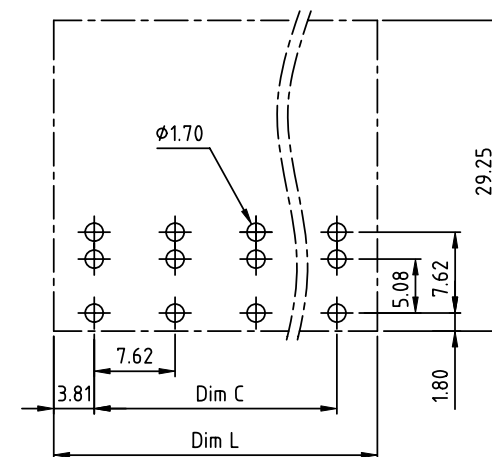
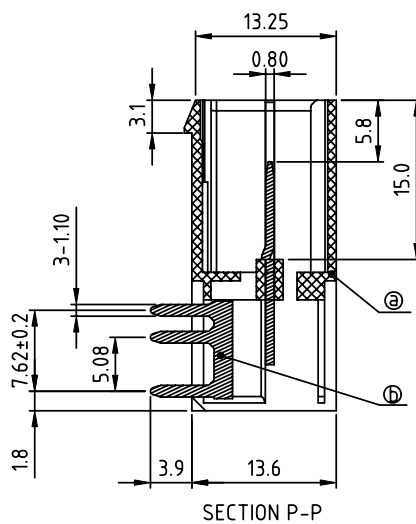
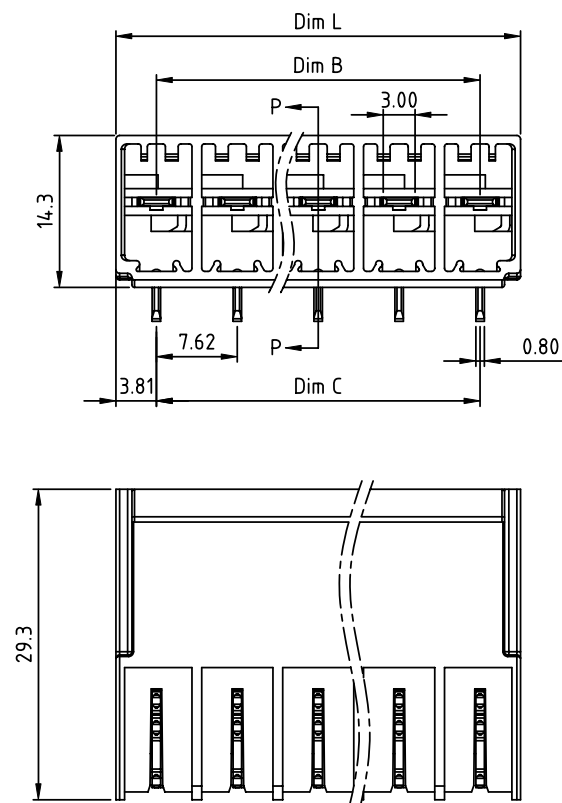


PRODUCT NUMBER

PITCH

VCxx00xC00J0G


7.62 mm


 RECOMMENDED P.C.B LAYOUT
 TOP VIEW

Material:

- Item (a) Terminal(housing):Thermoplastic (UL94V-0)
- Item (b) Pin: Copper Tin plated

Electrical: cULus

- Voltage rating:300V
- Current rating:41A
- Withstanding Voltage:1.6 KV
- Operating temperature:-40°C to +115°C
- Soldering temperature:260°C±5°C/5 Sec
- Safety Approval: 

DIMENSION

Dim L	N×7.62
Dim B	(N-1)×7.62
Dim C	(N-1)×7.62

N=Number of poles

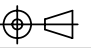
Poles	Tolerance
2p-5p	±0.20
6p-12p	±0.30
13p-16p	±0.40

PART NO.: VCxx00xC00J0G

 Solid block
 No. of poles
 02 2 poles
 03 3 poles
 ...
 16 16 poles

 Color
 0 Black (RAL9005)
 2 Red (RAL3001/D)
 3 Orange(RAL2011/P)
 4 Yellow(RAL1018/A)
 5 Green(RAL6018/T)
 6 Blue (RAL5015/A)
 8 Grey(RAL7035/D)
 9 White(RAL1102)
 C Green(RAL6018/U)

 RoHS compliant
 (lead<4%)
 In copper Alloy

mat'l. code				surface ASME Y14.5	tolerance ASME Y14.5	projection 	product family TERMINAL BLOCK
ltr	ecn	no	dr	date	tolerances unless otherwise specified	MM	title
					angles X±0.5		TERMINAL BLOCK
					flatness X.X±0.3		PLUGGABLE SOCKET,RIGHT ANGLE
					parallelism X.XX±0.1	scale	THREE TAILS TYPE,MOUNTING UNDER THE PCB
			dr	EVIN ZHONG	050714		dwg no
			enr	EVIN ZHONG	050714		sheet 1 of 1 size
			chr	HANKE FENG	050714		VCxx00xC00J0G
			appd	SHI JUN	050714		A4
sheet index	revision	A					type
	sheet	1					CUSTOMER Drawing