



Chipsmall Limited consists of a professional team with an average of over 10 year of expertise in the distribution of electronic components. Based in Hongkong, we have already established firm and mutual-benefit business relationships with customers from,Europe,America and south Asia,supplying obsolete and hard-to-find components to meet their specific needs.

With the principle of “Quality Parts,Customers Priority,Honest Operation,and Considerate Service”,our business mainly focus on the distribution of electronic components. Line cards we deal with include Microchip,ALPS,ROHM,Xilinx,Pulse,ON,Everlight and Freescale. Main products comprise IC,Modules,Potentiometer,IC Socket,Relay,Connector.Our parts cover such applications as commercial,industrial, and automotives areas.

We are looking forward to setting up business relationship with you and hope to provide you with the best service and solution. Let us make a better world for our industry!



Contact us

Tel: +86-755-8981 8866 Fax: +86-755-8427 6832

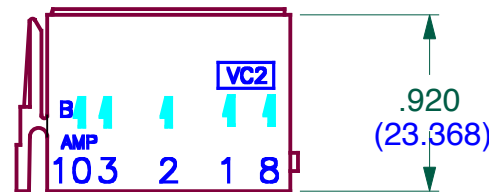
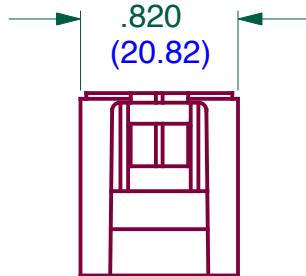
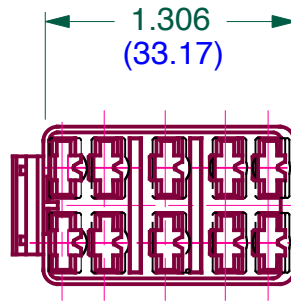
Email & Skype: info@chipsmall.com Web: www.chipsmall.com

Address: A1208, Overseas Decoration Building, #122 Zhenhua RD., Futian, Shenzhen, China



DO NOT SCALE DRAWING WORK TO FIGURE

DWG NO. VC2		REV.
LET	REVISIONS	DATE



VC2-06	BLUE
VC2-05	ORANGE
VC2-04	GREEN
VC2-03	RED
VC2-02	WHITE
VC2-01	BLACK
DESCRIPTION	COLOR

DIMENSIONS SUBJECT TO CHANGE WITHOUT NOTICE

FINISH

CARLINGSWITCH, INC.
PLAINVILLE, CT

PROPRIETARY NOTE:

NOTICE TO ALL PERSONS RECEIVING THIS DRAWING. THIS DOCUMENT IS THE PROPERTY OF CARLINGSWITCH, INC. AND IS NOT TO BE DISCLOSED, REPRODUCED IN WHOLE OR IN PART OR USED FOR MANUFACTURING PURPOSES BY ANYONE WITHOUT THE CONSENT OF CARLINGSWITCH, INC.

UNSPECIFIED TOLERANCES

FRAC. $\pm 1/64$ X.XXX $\pm .015$
ANGLES $\pm 1^\circ$

PROJECTIONS



DIMENSIONS
IN [mm]

TOOL NO.

REV

DR BY

DATE

CHK BY

DATE

APPD BY

DATE

TITLE

CONNECTOR HOUSING

SIZE

DWG NO.

VC2

REV.

USED ON

V SERIES

SCALE:

1:1

SHT

OF

1

1