



Chipsmall Limited consists of a professional team with an average of over 10 year of expertise in the distribution of electronic components. Based in Hongkong, we have already established firm and mutual-benefit business relationships with customers from,Europe,America and south Asia,supplying obsolete and hard-to-find components to meet their specific needs.

With the principle of “Quality Parts,Customers Priority,Honest Operation,and Considerate Service”,our business mainly focus on the distribution of electronic components. Line cards we deal with include Microchip,ALPS,ROHM,Xilinx,Pulse,ON,Everlight and Freescale. Main products comprise IC,Modules,Potentiometer,IC Socket,Relay,Connector.Our parts cover such applications as commercial,industrial, and automotives areas.

We are looking forward to setting up business relationship with you and hope to provide you with the best service and solution. Let us make a better world for our industry!



Contact us

Tel: +86-755-8981 8866 Fax: +86-755-8427 6832

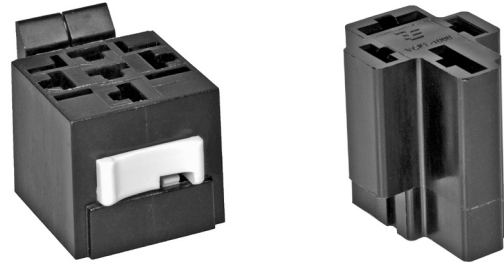
Email & Skype: info@chipsmall.com Web: www.chipsmall.com

Address: A1208, Overseas Decoration Building, #122 Zhenhua RD., Futian, Shenzhen, China



Connectors for Mini (Shrouded) / Maxi ISO Relays

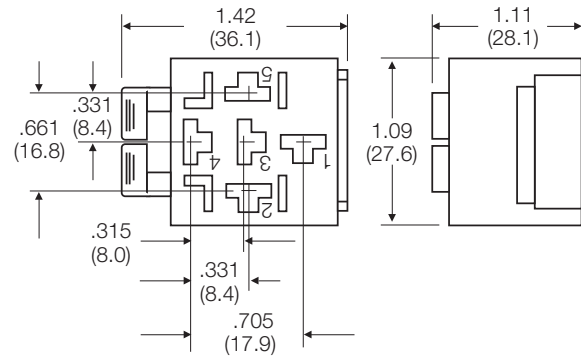
- **Connector VCF4-1003 for Mini (Shrouded) ISO Relays**
Five position connector with snap-in terminal position assurance lock (ships unassembled).
Integral tab interlocks connector and relay.
- **Connector VCF7-1000 for Maxi ISO Relays**
Four position connector has built-in features to lock in terminals.



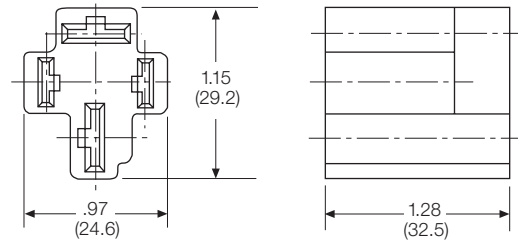
Technical Data	
Connector body material	
Connector VCF4-1003	Nylon
Connector VCF7-1000	Nylon
Weight	
Connector VCF4-1003	approx. 10.6g (0.37oz)
Connector VCF7-1000	approx. 6.6g (0.23oz)
Packaging/unit	
Connector VCF4-1003	50/box; 500/carton
Connector VCF7-1000	700/carton

Dimensions

Connector VCF4-1003
Terminals to be ordered separately.



Connector VCF7-1000
Terminals to be ordered separately.



Selection of fitting crimp terminals ^{1) 2)}							
Part numbers for connectors		Terminal size	Wire mm ² (AWG)	Use for	Quantity required		Part number for crimp terminals
Product code	Part number				Form A	Form C	
VCF4-1003	1-1393305-3	6.3 x .8 (.25 x .032)	0.5 - 0.8 (20-18)	Coil	2	2	1-1393310-8 (26A1348A) ³⁾
			1.3 - 2.1 (16-14)	Load	2	3	1-1393310-9 (26A1348B) ³⁾
			3.3 - 5.3 (12-10)	Load	2	3	2-1393310-0 (26A1348C) ³⁾
VCF7-1000	1393310-4	6.3 x .8 (.25 x .032)	0.8 - 2.1 (18-14)	Coil	2	—	42281-1 ⁴⁾
			9.5 x 1.2 (.375 x .047)	Load	2	—	280756-4 ⁵⁾
			9.5 x 1.2 (.375 x .047)	Load	2	—	280755-4 ⁵⁾

1) Crimp terminals are to be ordered separately.
 2) Mentioned crimp terminals are delivered in strip form. Loose pieces and hand tool available on request.
 3) Brass, tin plated.
 4) Brass.
 5) Phosphor bronze, tin plated.