



Chipsmall Limited consists of a professional team with an average of over 10 year of expertise in the distribution of electronic components. Based in Hongkong, we have already established firm and mutual-benefit business relationships with customers from,Europe,America and south Asia,supplying obsolete and hard-to-find components to meet their specific needs.

With the principle of "Quality Parts,Customers Priority,Honest Operation,and Considerate Service",our business mainly focus on the distribution of electronic components. Line cards we deal with include Microchip,ALPS,ROHM,Xilinx,Pulse,ON,Everlight and Freescale. Main products comprise IC,Modules,Potentiometer,IC Socket,Relay,Connector.Our parts cover such applications as commercial,industrial, and automotives areas.

We are looking forward to setting up business relationship with you and hope to provide you with the best service and solution. Let us make a better world for our industry!



Contact us

Tel: +86-755-8981 8866 Fax: +86-755-8427 6832

Email & Skype: info@chipsmall.com Web: www.chipsmall.com

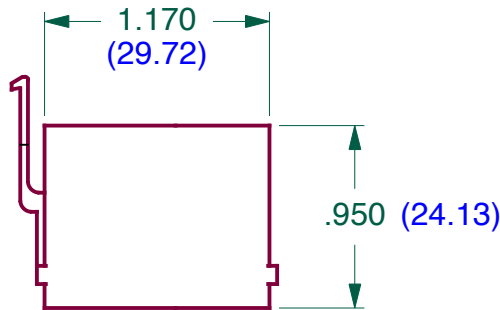
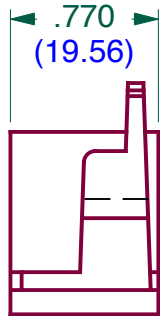
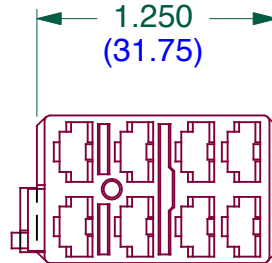
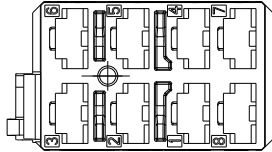
Address: A1208, Overseas Decoration Building, #122 Zhenhua RD., Futian, Shenzhen, China



DO NOT SCALE DRAWING WORK TO FIGURE

DWG NO.		VCH	REV.
LET	REVISIONS	DATE	

NEW REVISION



VCH-04	GREEN
VCH-03	RED
VCH-02	WHITE
VCH-01	BLACK
	COLOR

DIMENSIONS SUBJECT TO CHANGE WITHOUT NOTICE

FINISH



PROPRIETARY NOTE:

NOTICE TO ALL PERSONS RECEIVING THIS DRAWING. THIS DOCUMENT IS THE PROPERTY OF CARLING TECHNOLOGIES, INC. AND IS NOT TO BE DISCLOSED, REPRODUCED IN WHOLE OR IN PART OR USED FOR MANUFACTURING PURPOSES BY ANYONE WITHOUT THE CONSENT OF CARLING TECHNOLOGIES, INC.

UNSPECIFIED TOLERANCES

FRAC. $\pm 1/64$ X.XXX $\pm .015$
 ANGLES $\pm 1^\circ$

PROJECTIONS



DIMENSIONS
 IN [mm]

TOOL NO.	REV
DR BY	DATE
CHK BY	DATE
APPD BY	DATE

KRAMARZ

6-7-10

TITLE

CONNECTOR HOUSING

SIZE	DWG NO.	REV.
A	VCH	
USED ON	SCALE:	SHT OF
V SERIES	FULL	1 1