



Chipsmall Limited consists of a professional team with an average of over 10 year of expertise in the distribution of electronic components. Based in Hongkong, we have already established firm and mutual-benefit business relationships with customers from,Europe,America and south Asia,supplying obsolete and hard-to-find components to meet their specific needs.

With the principle of “Quality Parts,Customers Priority,Honest Operation,and Considerate Service”,our business mainly focus on the distribution of electronic components. Line cards we deal with include Microchip,ALPS,ROHM,Xilinx,Pulse,ON,Everlight and Freescale. Main products comprise IC,Modules,Potentiometer,IC Socket,Relay,Connector.Our parts cover such applications as commercial,industrial, and automotives areas.

We are looking forward to setting up business relationship with you and hope to provide you with the best service and solution. Let us make a better world for our industry!



Contact us

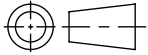
Tel: +86-755-8981 8866 Fax: +86-755-8427 6832

Email & Skype: info@chipsmall.com Web: www.chipsmall.com

Address: A1208, Overseas Decoration Building, #122 Zhenhua RD., Futian, Shenzhen, China



SW2014



Revision level			Revision Record	Changed	Date	Approved	Date
Drawing	State	Part					
00.0	Design Release		SEE ECN# 013484	GRW	6/30/2016	KAC	6/30/2016

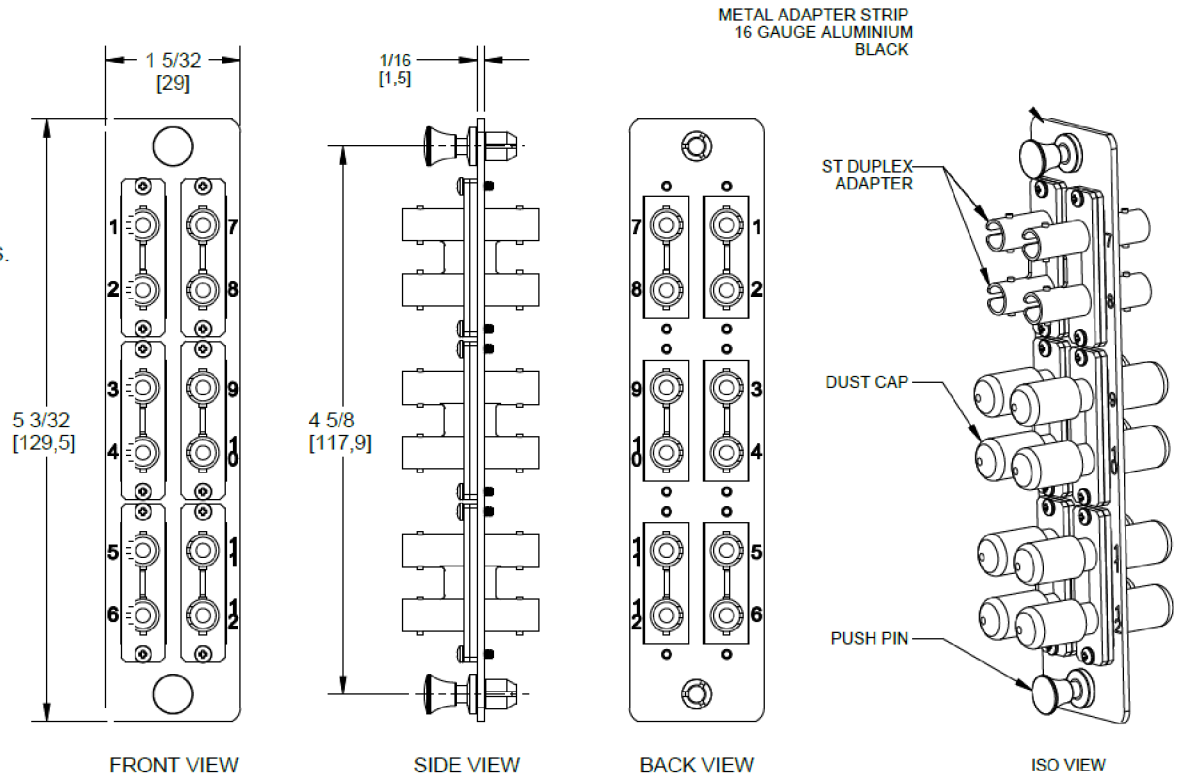
FEATURES AND BENEFITS:

- INDUSTRY STANDARD SIZE: LGX FOOTPRINT 5 3/32 [130] X 1 5/32 [29].
- SILKSCREENED PORTS NUMBERS ON BOTH SIDES.
- WIDE VARIETY OF ADAPTER QUANTITY & TYPE.
- MANUFACTURED WITH HIGH PERFORMANCE COMPONENT MATERIALS.
- LOW INSERTION LOSS.
- PRECISE ALIGNMENT FOR GLASS-TO-GLASS CONTACT.
- BLANK ADAPTER STRIP ALSO AVAILABLE TO COVER UNOCCUPIED CUT-OUTS.
- PUSH-PIN MECHANISM ALLOWS EASY AND QUICK TOOL-LESS INSTALLATION.

NOTES:

1. ALL DIMENSIONS ARE IN INCHES [MILLIMETERS].
2. INSERTION LOSS: 0.3dB MAX.
3. OPERATING & STORAGE TEMPERATURE -40°C TO +85°C
4. CERTIFICATIONS AND COMPLIANCES:

- ROHS
- GR-326-CORE
- TIA/EIA-568-C.3
- TIA-604-2
- UL 94
- IEC-61754-1
- ASTM A1008



Type #	Mode	Article #
VFAP12SMMST	MULTI	904-00379
VFAP12SSMSTZ	SINGLE	904-00380

Material
ASSEMBLED

Units: **inches**
Dimension without tolerances details to:
.xxxx = ±.0005
.xxx = ±.005
.xx = ±.01
.x = ±.03
None = ±.06
∠ = ±0.5°
Dimension Formatted in [mm]

The copyright of this drawing is reserved by HellermannTyton. It is issued on condition that it is not reproduced, copied, or disclosed to a third party, either wholly or in part, without the consent of HellermannTyton.

Drawn GRW 6/29/2016
Approved KAC 6/29/2016
HellermannTyton
North America
Email: corp@htamericas.com
Web: www.hellermann.tyton.com

Article/Type-No VFAP12_
Title **FT ADAPTER PANEL WITH 12 ST CONNECTORS**
Drawing-No PRODUCTION : Phase
16-1270-001-CSU

Scale 1:1
Project Number PRP 16-1270
Format AH
Sheet 1/1