



Chipsmall Limited consists of a professional team with an average of over 10 year of expertise in the distribution of electronic components. Based in Hongkong, we have already established firm and mutual-benefit business relationships with customers from,Europe,America and south Asia,supplying obsolete and hard-to-find components to meet their specific needs.

With the principle of “Quality Parts,Customers Priority,Honest Operation,and Considerate Service”,our business mainly focus on the distribution of electronic components. Line cards we deal with include Microchip,ALPS,ROHM,Xilinx,Pulse,ON,Everlight and Freescale. Main products comprise IC,Modules,Potentiometer,IC Socket,Relay,Connector.Our parts cover such applications as commercial,industrial, and automotives areas.

We are looking forward to setting up business relationship with you and hope to provide you with the best service and solution. Let us make a better world for our industry!



## Contact us

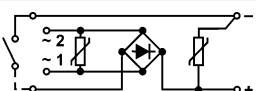
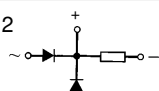
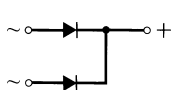
Tel: +86-755-8981 8866 Fax: +86-755-8427 6832

Email & Skype: [info@chipsmall.com](mailto:info@chipsmall.com) Web: [www.chipsmall.com](http://www.chipsmall.com)

Address: A1208, Overseas Decoration Building, #122 Zhenhua RD., Futian, Shenzhen, China



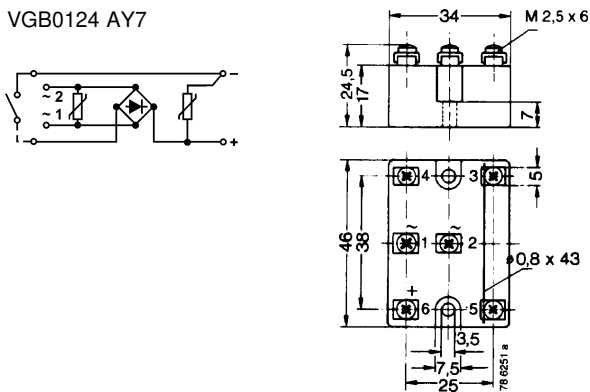
## Contents

Package style		$V_{RRM}$	$I_{dAVM}$	Type	Page	
		V	A			
<div>1</div> 	<div>2</div> 	1	1400	1.0	VGB 0124 AY7	F7 - 2
		2	2800	1.5	VGF 0136 AB	
		3	1400	1.1	VGF 0136 AH	
<div>3</div> 						

## Braking Rectifier Assemblies

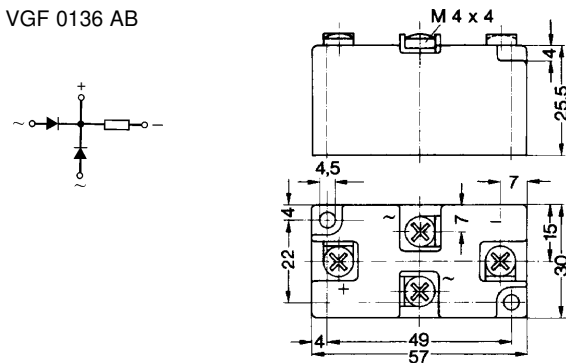
Typ	Typical			Max.			
	$V_{VRMS}$ V	$V_{dAV}$ V	$I_{dAVM}$ A	$I_{dAVM}$ A	$V_{RRM}$ V	$I_{FSM}$ A	$I^2t$ A <sup>2</sup> s
VGB 0124 AY7	380	340	1.0	1.0	1400	60	28

VGB0124 AY7

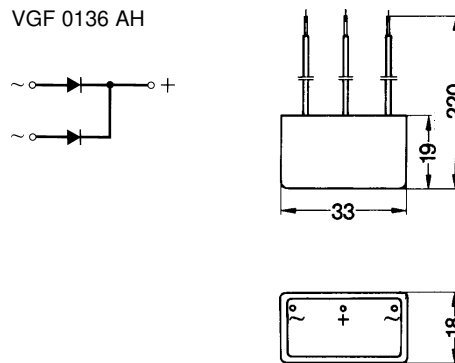


Typ	Typical			Max.			
	$V_{VRMS}$ V	$V_{dAV}$ V	$I_{dAVM}$ A	$I_{dAVM}$ A	$V_{RRM}$ V	$I_{FSM}$ A	$I^2t$ A <sup>2</sup> s
VGF 0136 AB	1000	440	1.2	1.5	2800	80	40
VGF 0136 AH	1000	440	0.6	1.1	1400	60	28

VGF 0136 AB



VGF 0136 AH



Data according to IEC 60747  
IXYS reserves the right to change limits, test conditions and dimensions